

# Wide 3

BL Neonview

Diffused, Flexible, Linear LED Lighting,  
24VDC, Constant Voltage, Vertical Bend,  
Ultra Wide Profile, Silicone, Single Color



Wide 3 with a ultra wide profile lens delivers up to 305 lm/ft of dot-free, uniform illumination. The unique vertical bending direction curves across the top of the flat light surface and is perfect for circles, contours and side-emitting light. The flexible, square shaped Silicone encapsulated diffuser shines a vivid line of light with a 120° beam distribution. Rated for a range of operating temperatures from -40° F to 131° F (-40° C to 55° C) and built with IP67 wet location rated injection molded terminations for sustained ability to weather the elements in extreme environmental conditions. This product is custom made and MOQ will apply, please consult BL for more information.

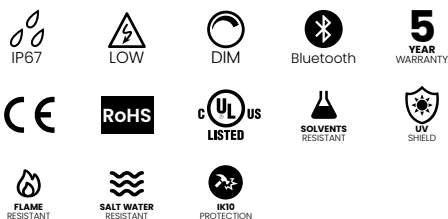
Dot-free   -40°F to 131°F (-40°C to 55°C)   3.15" Wide Light Surface   MOQ Applies

CLIENT	
PROJECT NAME	
LOCATION	
DATE	

## Product Detail



Lighting	Lamp	LED, SMD 2835
	LED's Per Foot	51 LEDs/ft (168 LEDs/m)
	Beam Angle	120°
	Average Life	50,000 Hours
Electrical	Controls	0-10V, MLV, ELV, Phase-Cut, Triac, DMX, Bluetooth
	Input Voltage	24VDC
	Max Input Current	4.12A (White)
	Connections	18AWG, Copper Conductors
	Power Cable Length	Standard 10ft (3m). Also available in 16ft (5m) and 32ft (10m)
Mechanical	Circuit	Class 2
	Housing Construction	Injection Moulded White Silicone
	Minimum Bend Radius	15.75" (400mm)
	Operating Temperature	-40°F to 131°F (-40°C to 55°C)
Environmental	Ingress Protection	IP67
	Impact Protection	IK10
	Resistance	UV, Flame, Solvents and Saltwater Resistant
	Certifications	cULus, CE, RoHS Compliant



## Performance

CCT/Color		2100K	2700K	3000K	3500K	4800K
Power	W/FT (W/m)	7.32 (24)				
Lumens	lm/FT (lm/m)	274 (900)	305 (1000)	305(1000)	305 (1000)	305 (1000)
Efficacy	lm/W	38	42	42	42	42
CRI	CRI	80				
Increment	inch (mm)	4.92 (125)				
Max. Length	ft (m)	12ft (3.65m)				

## Ordering

Product Code	Series	CCT	Input Voltage	IP Rating
W3	N		24	IP67
		2100K		
		2700K		
		3000K		
		3500K		
		4800K		

**Note:**  
Lengths & Mounting Accessories for Neonview Wide 3  
must be confirmed at time of order.

**BL LIGHTING**  
ILLUMINATE EVERYTHING

111 - 8838 Heather St. Vancouver, BC, Canada. V6P 3S8  
P: 1-804-874-4405 E: info@bllighting.com  
Copyright © BL INNOVATIVE LIGHTING. All Rights Reserved.

Solid State Lighting is sensitive to power fluctuations. Surge protection is highly recommended for all LED lighting products and should be on a dedicated circuit to protect against premature failure. Lack of surge protection may void your warranty.

Designed & Assembled in North America.

Specifications subject to change without notice. Please refer to our website at bllighting.com for current technical data.

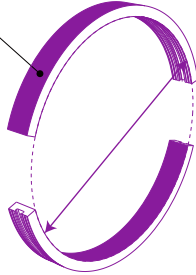
For more information,  
please download the  
BL LIGHTING catalog

bllighting.com



## Minimum Bend Radius and Bend Orientation

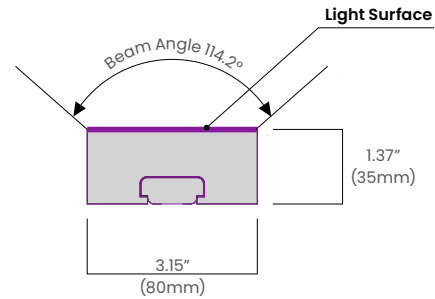
Light Surface



**Minimum Bend**  
Ø 31.49" (Ø 800mm)

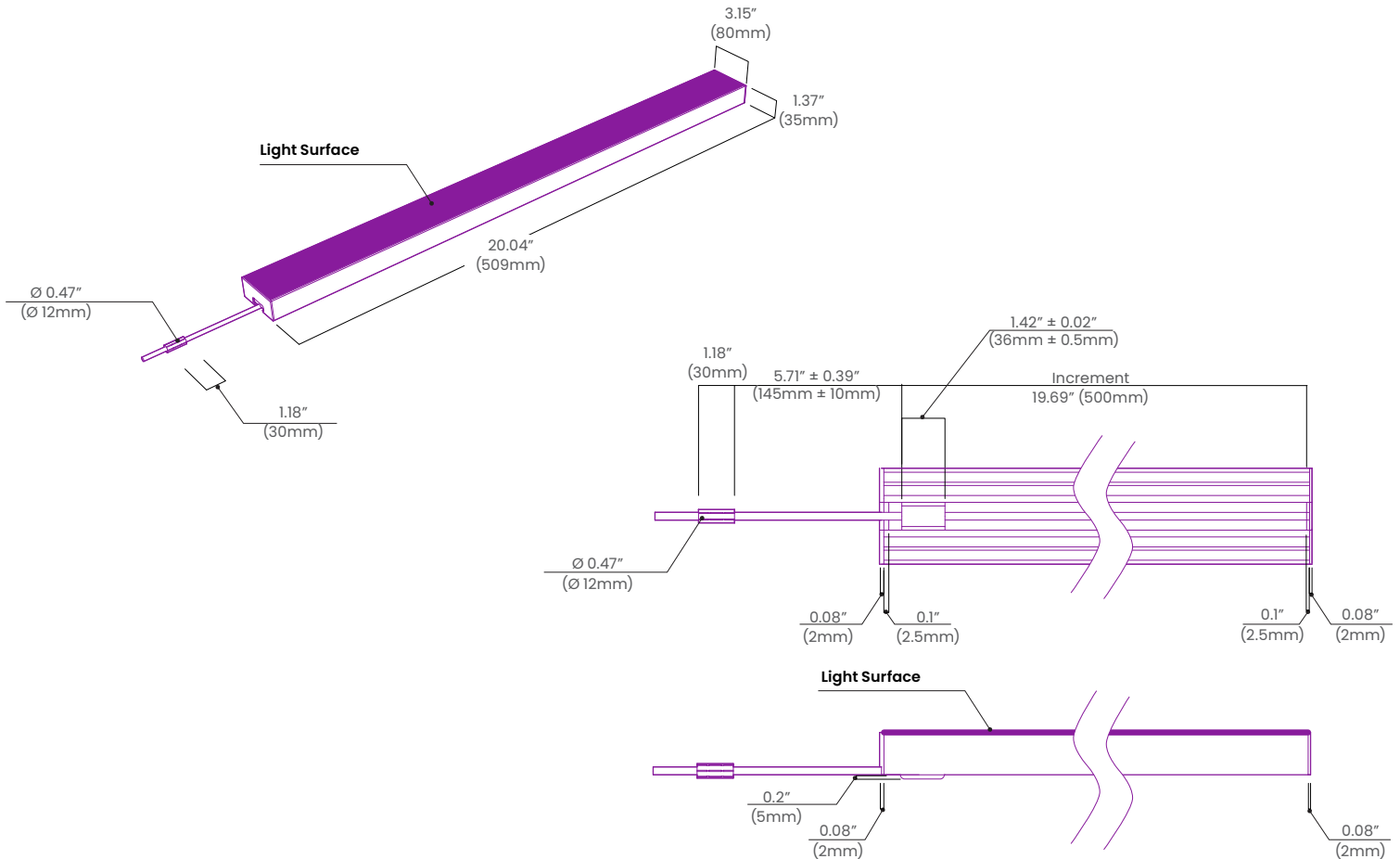
**Cutting Increment**  
4.92" (125mm)

## Beam Angle & Viewing Angle

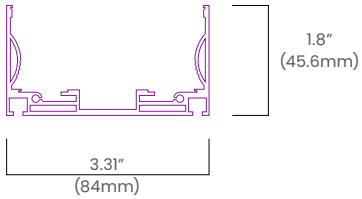


Average Beam Angle (50%): 114.2°

## Dimensions & Lead Details

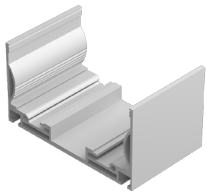


## Accessories and Dimension



### Mounting Clip

NVW3 CPS



### Mounting Channel

NVW3 CHS



### Flexible Channel

NVW3 FCHS VAL

