

# TRS 347

BL Power

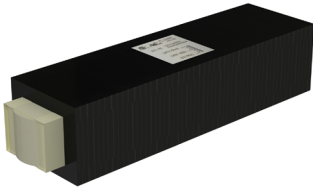
Step-Down Transformer  
125W, 347AC - 120VAC



The TRS 347 is a premium built, commercial-grade step-down transformer. When input voltage is at 347VAC, the TRS 347 gently reduces the voltage for compatibility with many of our power supplies.

CLIENT	
PROJECT NAME	
LOCATION	
DATE	

## Product Detail

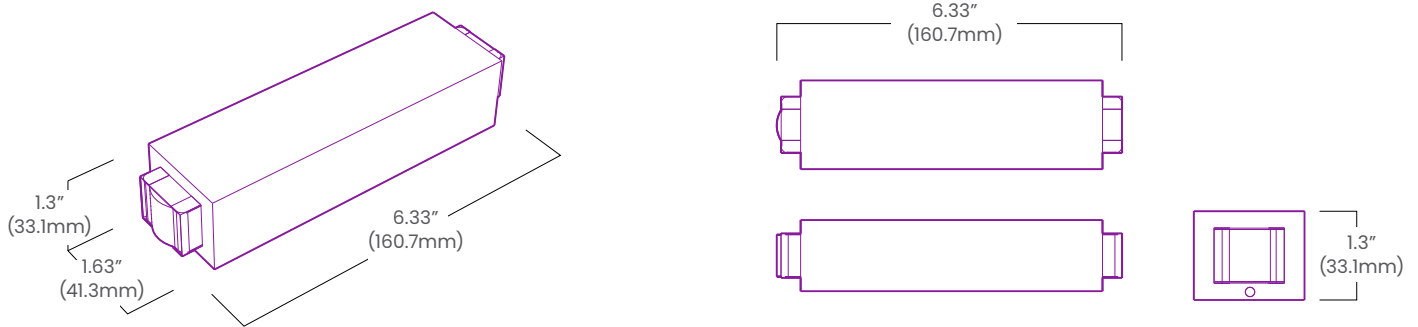


<b>Electrical</b>	Input Voltage	347VAC
	Output Voltage	120VAC
	Input Frequency	60Hz
	Load	125W
	Connections	18AWG, Copper Conductors
	Min Load	20% - 25%
	Efficiency	88%
	Max. Ambient Temp.	-40°F to -22°F (-40°C to 50°C)
<b>Mechanical</b>	Rating	Class B, 266°F(130°C) Insulation
	Housing Construction	Potted Epoxy
<b>Environmental</b>	Weight	1.22kg (2.7lb)
	Ingress Protection	IP20
<b>Wiring</b>	Certifications	cURus,
	347VAC	Red
	120VAC	Black
	0V	White

## Ordering

Product Code	Series	Power	Output	Input Voltage	IP Rating
TRS347	P	125W	120	347	IP20

## Dimensions



### BL LIGHTING ILLUMINATE EVERYTHING

111 - 8838 Heather St. Vancouver, BC, Canada. V6P 3S8  
P: 1-804-874-4405 E: info@bllighting.com  
Copyright © BL INNOVATIVE LIGHTING. All Rights Reserved.

Solid State Lighting is sensitive to power fluctuations. Surge protection is highly recommended for all LED lighting products and should be on a dedicated circuit to protect against premature failure. Lack of surge protection may void your warranty.

Designed & Assembled in North America.

Specifications subject to change without notice. Please refer to our website at bllighting.com for current technical data.

For more information, please download the BL LIGHTING catalog

[bllighting.com](http://bllighting.com)

