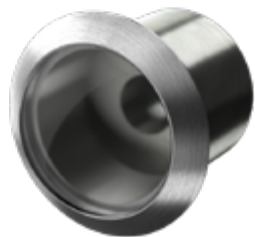


P11 is a miniature fiber optic end fixture designed for seamless installation in architectural and landscape applications. Constructed from 316 stainless steel with a domed clear or frosted 1.02" tempered glass lens, it offers smooth and precise light transmission. Its beam angle, adjustable between 20° and 40°, depends on fiber depth, making it ideal for controlled accent lighting. Designed for recessed mounting, P11 supports fiber diameters from 0.08" to 0.31" and weighs just 0.18 lbs. Rated IP65 and operating from 14°F to 113°F, it delivers reliable performance in both indoor and outdoor environments.

14°F to 113°F (-10°C to 45°C)

CLIENT	
PROJECT NAME	
LOCATION	
DATE	

Product Detail



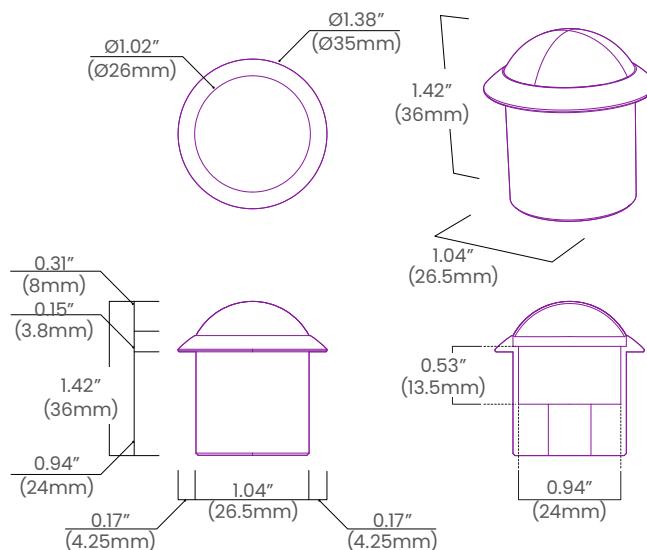
Lighting	Beam Angle	20° - 40° (Beam angle determined by fiber depth)
	Housing Construction	316 Stainless Steel, Tempered Glass
	Optics	Ø1.02" (Ø26mm) Domed Clear or Frosted Lens
Mechanical	Mounting	Recessed
	Min/Max Fiber size	0.08" - 0.31" (2mm - 8mm)
	Weight	0.18lbs (80g)
	Ingress Protection	IP65
Environmental	Certifications	Made in USA
	Operating Temperature	14°F to 113°F (-10°C to 45°C)



Ordering

Product Code	Series	Optics
P11	PV	
		CL = Clear
		FR = Frosted

Dimensions



BL LIGHTING ILLUMINATE EVERYTHING

111 - 8838 Heather St. Vancouver, BC, Canada. V6P 3S8
P: 1-804-874-4405 E: info@blighting.com
Copyright © BL INNOVATIVE LIGHTING. All Rights Reserved.

Solid State Lighting is sensitive to power fluctuations. Surge protection is highly recommended for all LED lighting products and should be on a dedicated circuit to protect against premature failure. Lack of surge protection may void your warranty.

Designed & Assembled in North America.

Specifications subject to change without notice. Please refer to our website at blighting.com for current technical data.

For more information, please download the BL LIGHTING catalog

blighting.com

