



LIGHTING
SINCE 1986



BL Controls Nero Tunable Manual

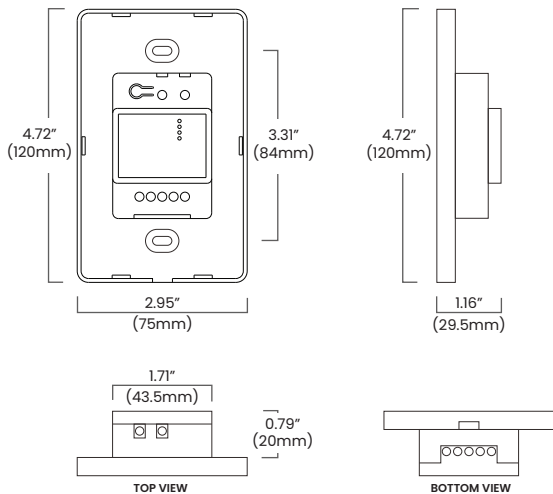
BL LIGHTING. ILLUMINATE EVERYTHING

111 - 8838 Heather St. Vancouver, BC, Canada. V6P 3S8
P: 1-604-874-4405 E: info@blighting.com
Copyright © BL INNOVATIVE LIGHTING. All Rights Reserved.

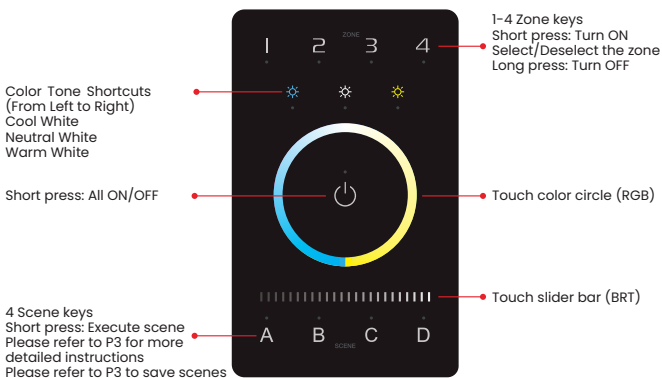
blighting.com



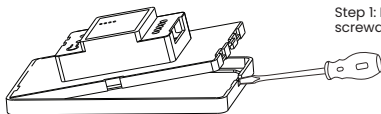
Dimensions



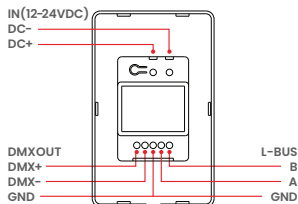
Key Functions



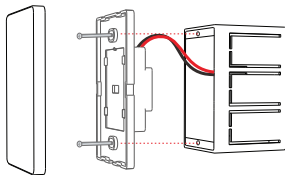
Installation Instructions



Step 1: Remove the panel plate with a flathead screwdriver, as shown in the graphic.

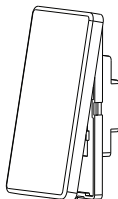


Step 2: Attach the wires to the panel, as shown in the diagram below. Please be sure to turn off the power to the circuit at the circuit breaker or fuse box before attaching the wires.



Glass panel cover Panel plate Junction box

Step 3: Install the panel plate. Once the wires are attached correctly, you can gently fold any excess wire and compress the panel into the junction box. Tighten the screws to secure the panel plate to the box.



Step 4: Put the panel cover in place. Gently snap the panel cover onto the plate.

Attention

Please use in spacious and open space. Avoid metal obstructions above and in front of products.

No disassembly of products so as not to affect the warranty.

Please use in a cool and dry environment.

Avoid direct contact with light and heat.

Please do not open, modify, repair, or maintain products without authorization, otherwise warranties are not allowed.

App Operating Instructions



Scan and download the App

1. Register an account

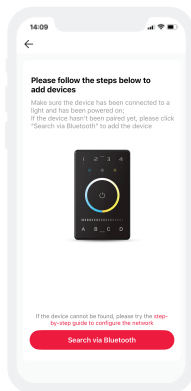
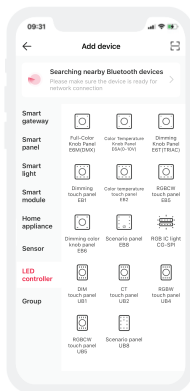
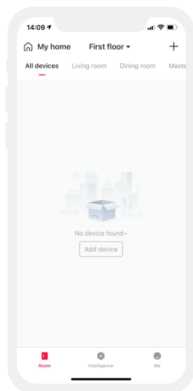
- 1.1 Scan the QR code below with your mobile phone and follow the prompts to complete the app installation.
- 1.2 Open the App and log in or register an account

2. Pairing instructions

Create a home if you are a new user. Click “+” icon in the upper right corner and access the “Add device” list. Follow the prompts to add a LED driver first, then pick “LED controller-Touch panel” from the device list. Follow the prompts to activate the device, then click “Bluetooth search” to add the device - CT touch Panel UB2.

How to reset the device to factory defaults:

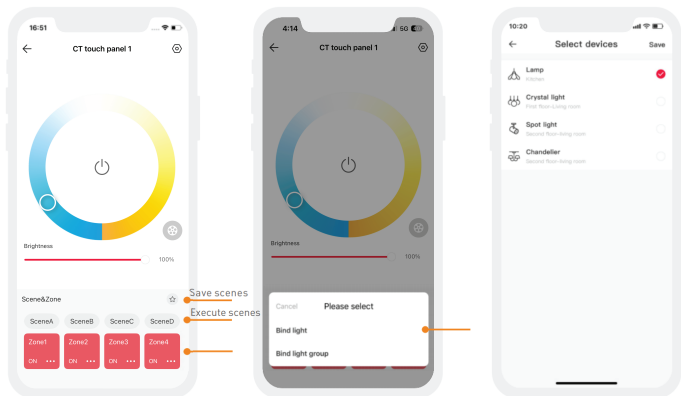
When the panel is powered on (the indicator light is white), long press Key A and Key D for 6s. If all the indicator lights of the panel flash several times, it means the device has been reset to factory defaults.



3. How to bind lights / light groups and save scenes

After pairing, get access to the control interface and choose the button for the zone lighting you are going to edit. You can bind lights and light groups to the buttons.

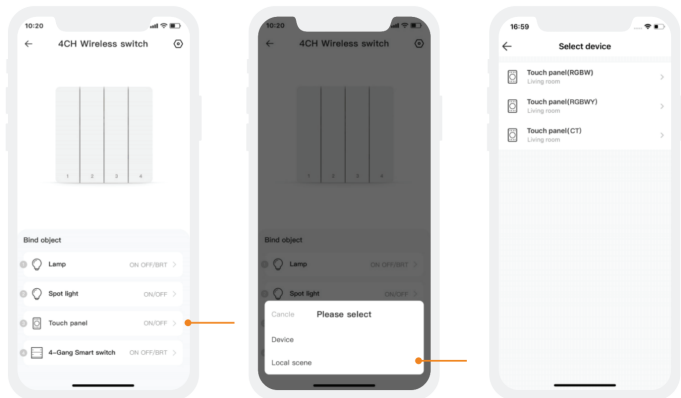
Local scenes: After adjusting the zone lighting to appropriate status, click "Save" and follow the prompts to save zone lighting status in the scene. After saving, click the corresponding scene button to execute the current local lighting scene (Supporting 16 scenes currently).



4. How to bind a bluetooth remote/bluetooth intelligent wireless switch

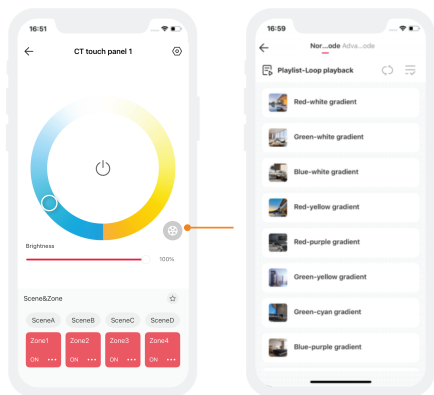
Please refer to the manual of a bluetooth remote / bluetooth intelligent wireless switch.

After adding the device, access the control interface and bind with the corresponding intelligent touch panels.

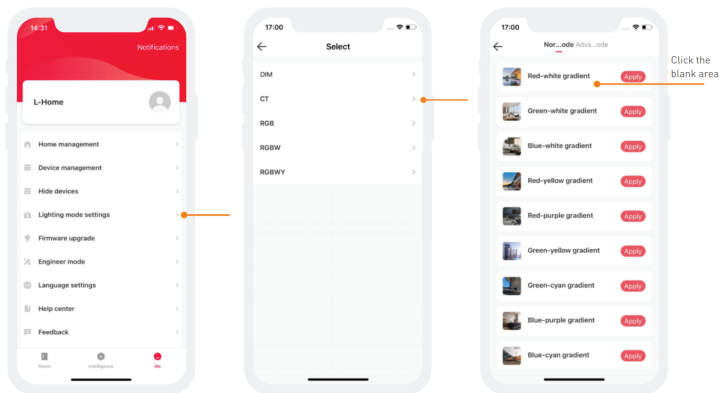


5. Normal modes and Advanced modes

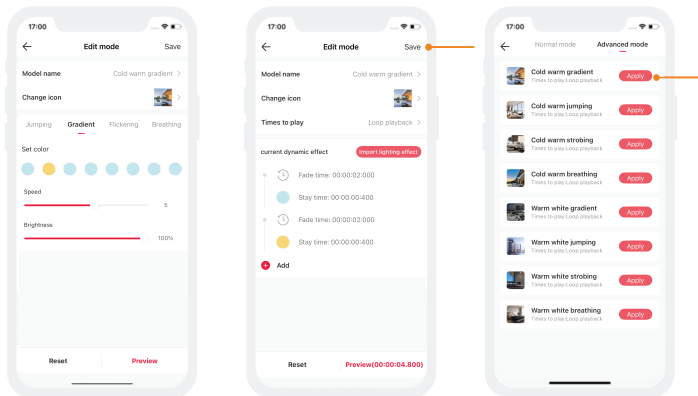
Advanced modes: Click the blank area of the mode and it can be executed. There are 8 editable advanced modes in total which satisfy the general needs of customers.



Edit modes: Switch to "Me" menu and click "Lighting mode settings". After selecting the light fixture type, click the blank area of mode to get access to the editable mode interface and edit it.



After complete editing, click “Apply” and the mode can be applied to the device.



6.How to share control of your home

The home sharing mode adopted is able to share the home or transfer the home founder to other home members. Switch to “Me” menu and choose “Home management”. Click the home that you want to share and click “Add member”, then follow the prompts to complete the home sharing.

