

LN6260 RGBW

BL Arealinear

Linear LED Wall Washer
12W/FT, 100-277VAC Line Voltage



Powerful, efficient, and engineered to deliver exceptional wall washing, grazing and architectural highlighting of exterior facades, signage, bridges and monuments. Vertically illuminate buildings with light projection with an impressive output of up to 2400 lumens, in four beam angle options. Durably constructed with aluminum housing, shatter-resistant tempered glass lens cover, weatherproof line voltage power cables, integral 100-277VAC power supply, and two, 180° on board adjustable mounting brackets that allow for precise light distribution. Perfect for dynamic illumination of spatial envelopes in urban settings.

Up to 2400lm/unit

100-277VAC

1FT, 2FT, 3FT and 4FT Length Options

CLIENT	
PROJECT NAME	
LOCATION	
DATE	

Product Detail



Lighting	Power	12W (1FT), 24W (2FT), 36W (3FT), 48W (4FT)
	Average Life	50,000 Hours
	Controls	DMX
Electrical	Input Voltage	100-277VAC
	Connections	16AWG, Copper conductors
	Power Cord Length	1ft (0.3m), extendable
	DMX Cords Length	1ft (0.3m), extendable
Mechanical	Housing Construction	Gray Aluminum Body, Tempered Glass Lens Cover
	Weight	1.8kg/3.96lbs (1FT), 3.6kg/7.94lbs (2FT), 4.5kg/9.92lbs (3FT), 5.8kg/12.79lbs (4FT),
	Mounting	Integrated 180° Adjustable Mounting Bracket
Accessories	PCH LN6260	Power Cable 3-Pin (5FT, 15FT, 30FT)
	PCE LN6260	Power Cable Extension 3-Pin (5FT, 15FT, 30FT)
	M3P LN6260	End Cap (3-Pin Power Cable)
	DMX 6PH LN6260	Power+Data Cable 6-Pin (5FT, 15FT, 30FT)
	DMX 6PE LN6260	Power+Data Cable Extension 6-Pin (5FT, 15FT, 30FT)
	M6P LN6260	End Cap (6-Pin Cable)
Environmental	TJ6 LN6260	T-Joint, 6-Pin to 3-Pin Power and Data
	Ingress Protection	IP66
	Vibration Rating	3G
	Certifications	ETL
	Operating Temperature	-4°F to 122°F (-20°C to 50°C)

Performance

CCT/Color		RGBW(3000K)	RGBW(4000K)	RGBW(6500K)
Power	W/FT	12		
Lumens	lm/FT	600		
Efficacy	lm/W	50		
CRI	CRI	80 (White LED only)		

Ordering

Product Code	Series	Length	Color	Beam Angle	Finish	Input Voltage	IP Rating
LN6260C	L					UNI	IP66
		1FT	RGBW(3000K)	20°	GR = Gray		
		2FT	RGBW(4000K)	30°	BK = Black		
		3FT	RGBW(6500K)	45°	WH = White		
		4FT		20°x50°			

BL LIGHTING
ILLUMINATE EVERYTHING

111 - 8838 Heather St. Vancouver, BC, Canada. V6P 3S8
P: 1-804-874-4405 E: info@bllighting.com
Copyright © BL INNOVATIVE LIGHTING. All Rights Reserved.

Solid State Lighting is sensitive to power fluctuations. Surge protection is highly recommended for all LED lighting products and should be on a dedicated circuit to protect against premature failure. Lack of surge protection may void your warranty.

Designed & Assembled in North America.

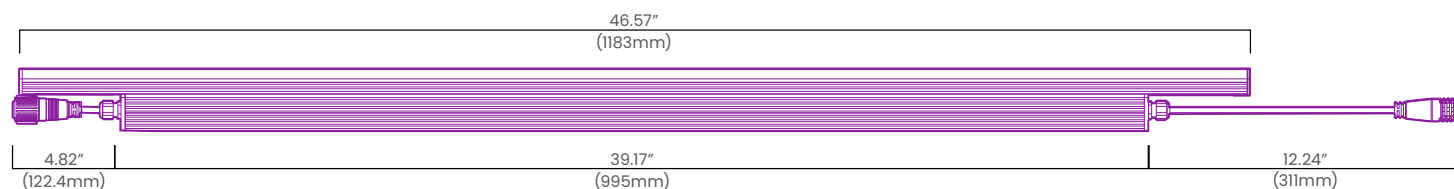
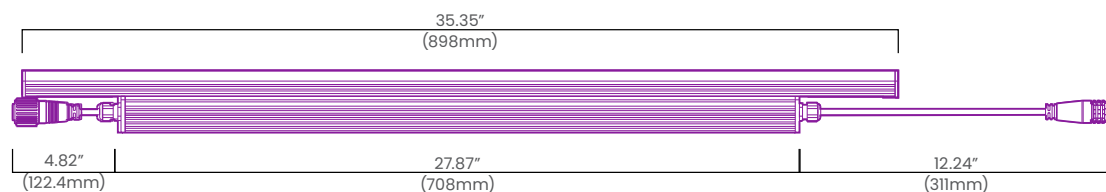
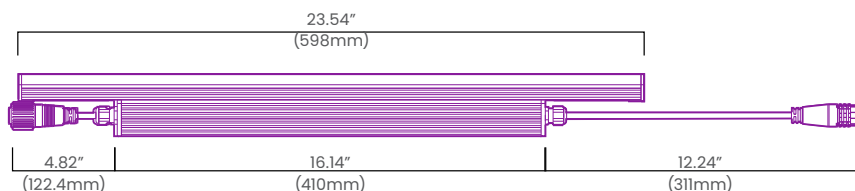
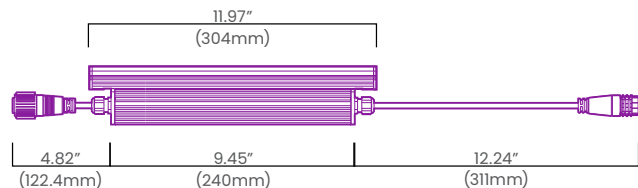
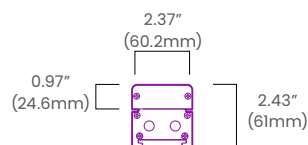
Specifications subject to change without notice. Please refer to our website at bllighting.com for current technical data.

For more information,
please download the
BL LIGHTING catalog

bllighting.com



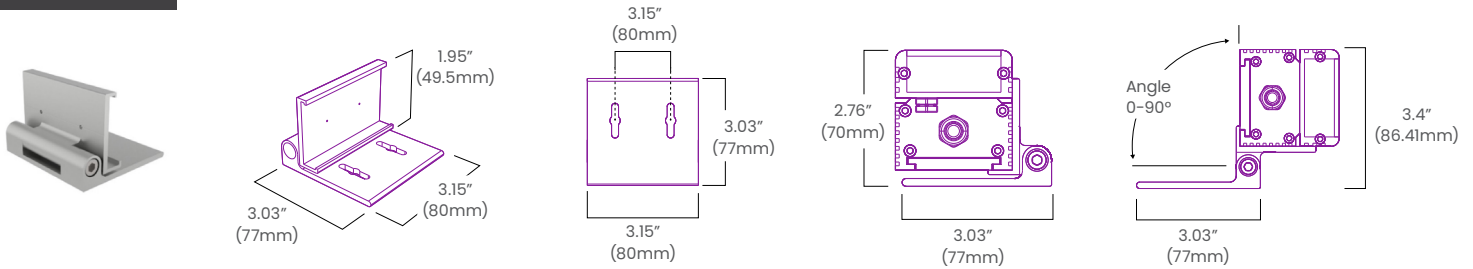
Dimensions



Mounting Accessories

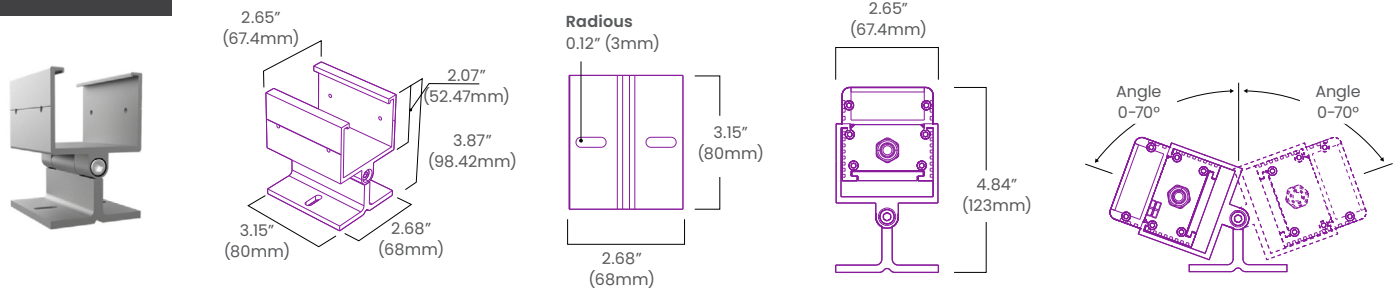
Flat 90° Mounting Bracket

FT90-LN6260-L-MA



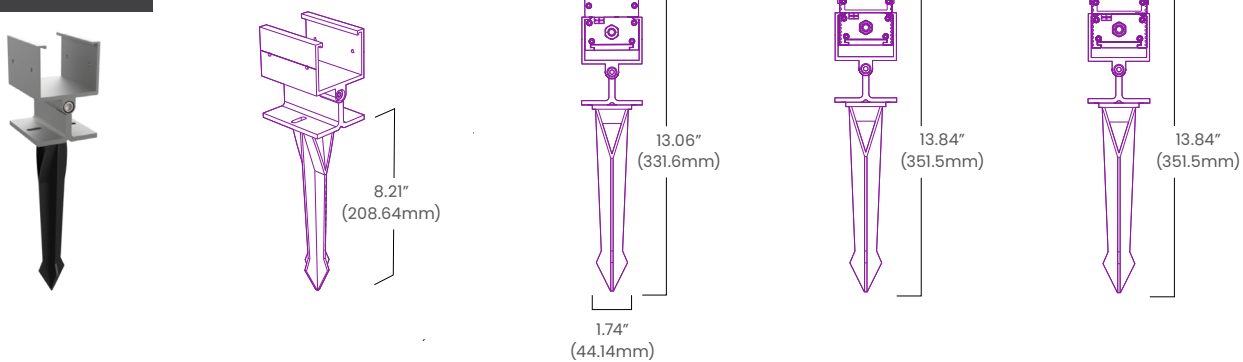
Surface Adjustable 180° Mounting Bracket

AD180-LN6260-L-MA



Adjustable 180° Mounting Bracket Landscape Spike

SK180-LN6260-L-MA



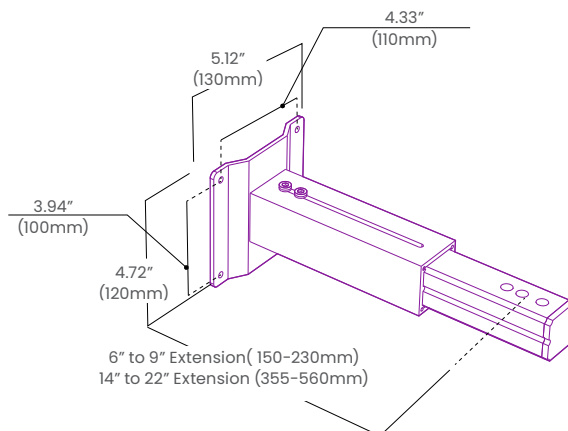
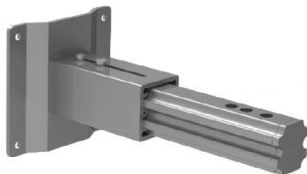
Adjustable Wall Mount Arm (2 sizes available)

ASM-LN6260-L-MA

6" to 9" Extension

ALG-LN6260-L-MA

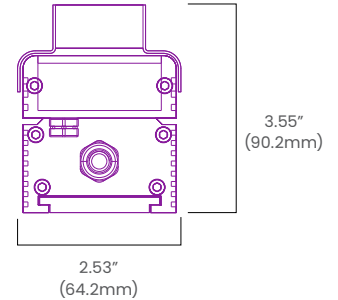
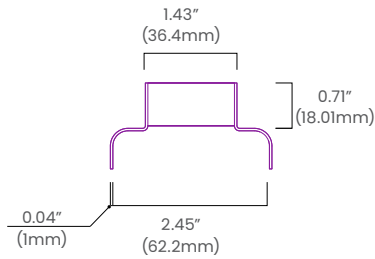
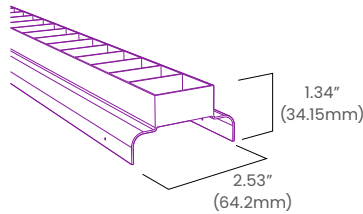
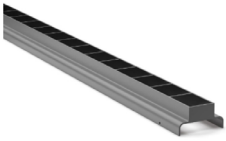
14" to 22" Extension



Anti-Glare Accessories

Symmetric Anti-Glare Shield

SYSD-LN6260-L-AG



Asymmetric Anti-Glare Shield

AYSD-LN6260-L-AG

