

GR60

BL Inground

Circular, Outdoor Recessed Luminaire
1W, 12VDC and 24VDC Constant Voltage



GR60 is a compact, circular outdoor recessed luminaire delivering up to 109 lumens per unit at just 1W. Available in 3000K, 4000K, 6000K, and RGB options, with beam angles of 12°, 45°, and 120°, it's ideal for subtle yet effective architectural or landscape highlighting. Built with a robust 316 stainless steel housing and aluminum mounting sleeve, **GR60** supports static loads up to 4410 lbs, making it perfect for installation in pavers, decks, patios, and walkways. Rated IP68 for superior water resistance and IK08 for impact protection, it operates from -4°F to 113°F, with 0/1-10V, and DMX control options for flexible lighting effects.

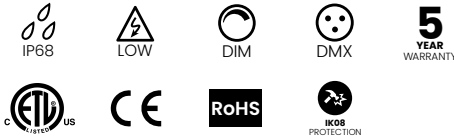
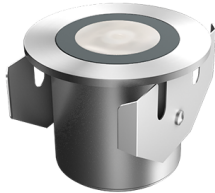
Up to 109lm/unit

12VDC and 24VDC Options

316 Stainless Steel

CLIENT	
PROJECT NAME	
LOCATION	
DATE	

Product Detail



Lighting	Power	1W
	Beam Angle	12°, 45°, and 120°
	Average Life	50,000 Hours
Electrical	Controls	ON/OFF, 0/1-10V, DMX
	Input Voltage	12VDC, 24VDC
	Circuit	Class 2
Mechanical	Housing Construction	316 Stainless Steel
	Light Windows	0.31" (8mm) Tempered Glass
	Weight Bearing	4410 lb (2000kg) Static
	Mounting Sleeve	Aluminum
	Connections	6.4FT (2m), 2x18AWG cable
	Weight	1.03lb (465g)
Environmental	Ingress Protection	IP68
	Certifications	ETL, CE, RoHS
	Impact Protection	IK08
	Operating Temperature	-4°F to 113°F (-20°C to 45°C)

Performance

Power	W/unit	1			
CCT	CCT	3000K	4000K	6000K	RGB
Lumens	lm/unit	109			109
Efficacy	lm/W	109			109
CRI	CRI	80			80

Ordering

Product Code	Series	CCT	Beam Angle	Optics	Control	Input Voltage	IP Rating
GR60	G						IP68
		3000K	12°	CL = Clear	NO	12 = 12VDC	
		4000K	45°	FR = Frosted	1-10V	24 = 24VDC	
		6000K	120°		DMX		
		RGB					

BL LIGHTING
ILLUMINATE EVERYTHING

111 - 8838 Heather St. Vancouver, BC, Canada. V6P 3S8
P: 1-804-874-4405 E: info@bllighting.com
Copyright © BL INNOVATIVE LIGHTING. All Rights Reserved.

Solid State Lighting is sensitive to power fluctuations. Surge protection is highly recommended for all LED lighting products and should be on a dedicated circuit to protect against premature failure. Lack of surge protection may void your warranty.

Designed & Assembled in North America.

Specifications subject to change without notice. Please refer to our website at bllighting.com for current technical data.

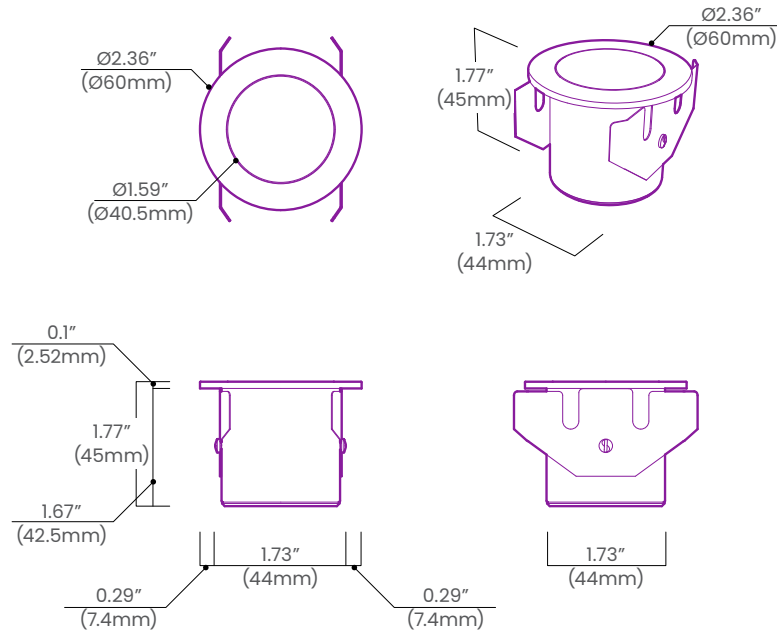
For more information, please download the BL LIGHTING catalog

bllighting.com



Dimensions

GR60



Recessed Mounting Sleeve

