

Flat Tunable

BL Neonview

Diffused, Flexible, Linear LED Lighting,
24VDC, Constant Voltage
Flat Profile, Silicone, Tunable White

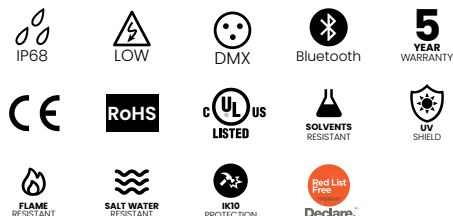


Flat Tunable has a standard fully flexible Silicone encapsulated diffuser and is rated for a range of operating temperatures from -40° F to 131° F (-40° C to 55° C) for sustained ability to weather the elements, even in the most extreme environmental conditions. Set the mood with Flat Tunable, delivering adjustable luminous white light with control options to easily change LED intensity, dim to warm, and tune in to any CCT.

| | |
|--------------|--|
| CLIENT | |
| PROJECT NAME | |
| LOCATION | |
| DATE | |

Dot-free Seamless connections -40°F to 131°F (-40°C to 55°C) Tunable White

Product Detail



| | | |
|---------------|-----------------------|--|
| Lighting | Lamp | LED, SMD 3015 |
| | LED's Per Foot | 44 LEDs/ft (144 LEDs/m) |
| | Beam Angle | 120° |
| | Average Life | 50,000 Hours |
| Electrical | Controls | DMX, Bluetooth |
| | Input Voltage | 24VDC |
| | Max Input Current | 4.12A (White) |
| | Connections | 18AWG, Copper Conductors |
| | Power Cable Length | Standard 10ft (3m). Also available in 16ft (5m) and 32ft (10m) |
| Mechanical | Circuit | Class 2 |
| | Housing Construction | Injection Moulded White Silicone |
| | Minimum Bend Radius | 2.25" (60mm) |
| | Operating Temperature | -40°F to 131°F (-40°C to 55°C) |
| Environmental | Ingress Protection | IP68 |
| | Impact Protection | IK10 |
| | Vibration Rating | - |
| | Resistance | UV, Flame, Solvents and Saltwater Resistant |
| | Certifications | cULus, CE, RoHS Compliant |

Performance

| CCT/Color | | 2200K | 5700K | 2200K + 5700K |
|-------------|--------------|-----------------|----------|---------------|
| Power | W/FT (W/m) | - | - | 3.66 (12) |
| Lumens | lm/FT (lm/m) | 43 (140) | 52 (170) | 95 (312) |
| Efficacy | lm/W | - | - | 26 |
| CRI | CRI | 80 | | |
| Increment | inch (mm) | 3.28 (83.3) | | |
| Max. Length | ft (m) | 24ft 6in (7.5m) | | |

Ordering

| Product Code | Series | CCT | Input Voltage | IP Rating |
|--------------|--------|-------------|---------------|-----------|
| FTN | N | 2200K-5700K | 24 | IP68 |

Note:

Lengths, Lead Orientations & Mounting Accessories for Neonview must be confirmed at time of order.

BL LIGHTING ILLUMINATE EVERYTHING

111 - 8838 Heather St. Vancouver, BC, Canada. V6P 3S8
P: 1-804-874-4405 E: info@bllighting.com
Copyright © BL INNOVATIVE LIGHTING. All Rights Reserved.

Solid State Lighting is sensitive to power fluctuations. Surge protection is highly recommended for all LED lighting products and should be on a dedicated circuit to protect against premature failure. Lack of surge protection may void your warranty.

Designed & Assembled in North America.

Specifications subject to change without notice. Please refer to our website at bllighting.com for current technical data.

For more information, please download the BL LIGHTING catalog

bllighting.com



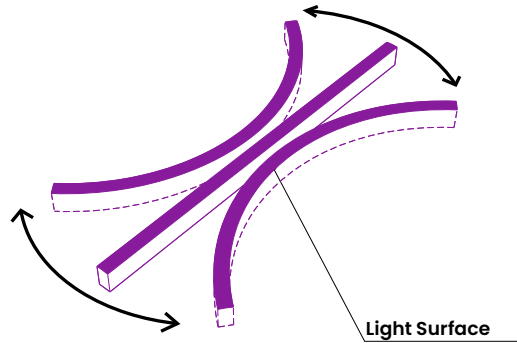
Minimum Bend Radius and Bend Orientation

Minimum Bend Radius

2.25" (60mm)

Cutting Increments

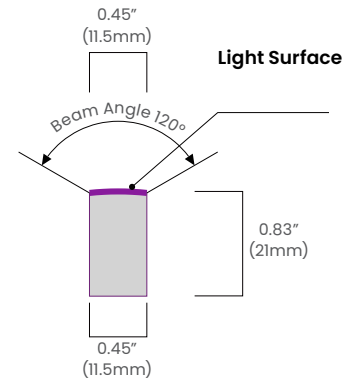
3.28" (83.3mm)



BL Neonview Flat Series bends horizontally

Vertical bend option available on BL NeonView Side Series

Beam Angle & Viewing Angle

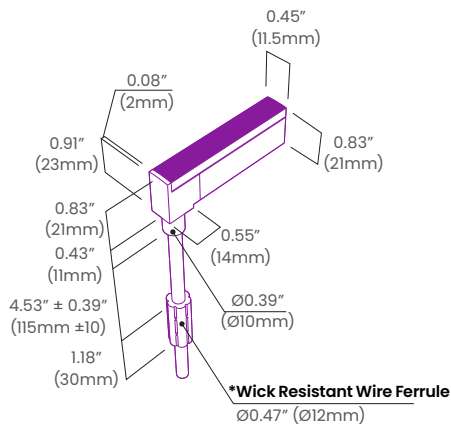


Average Beam Angle (50%): 112.2°

Dimensions & Lead Orientations

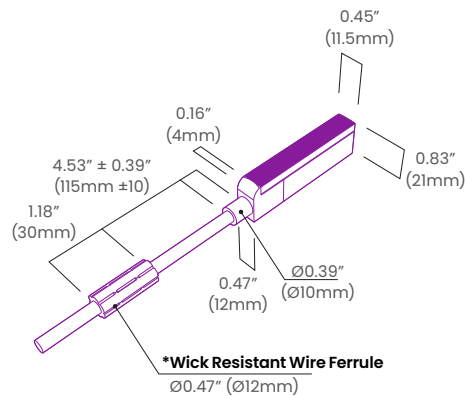
Back Lead

NVS FT BC 68

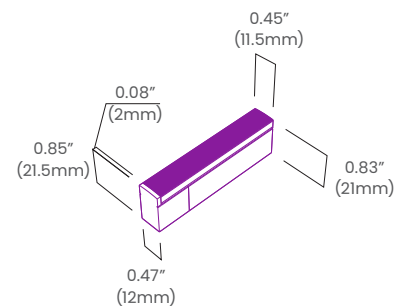


End Lead

NVS FT EC 68

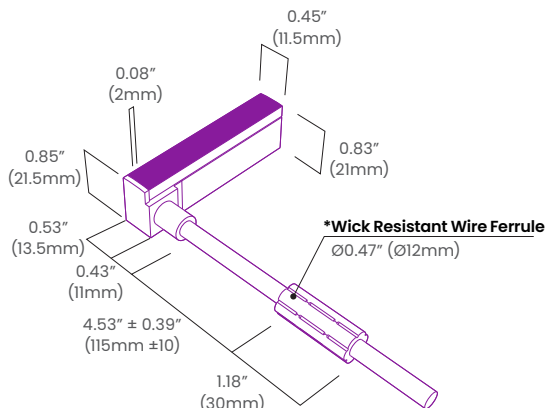


End Cap



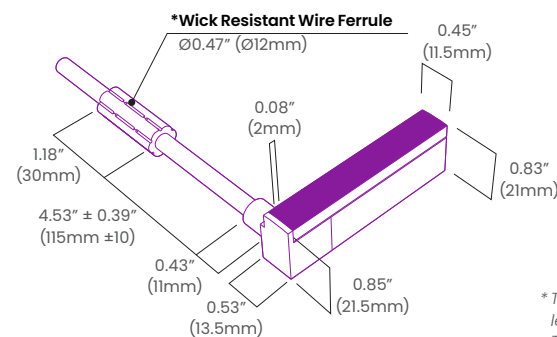
Right Side Lead

NVS FT RC 68



Left Side Lead

NVS FT LC 68



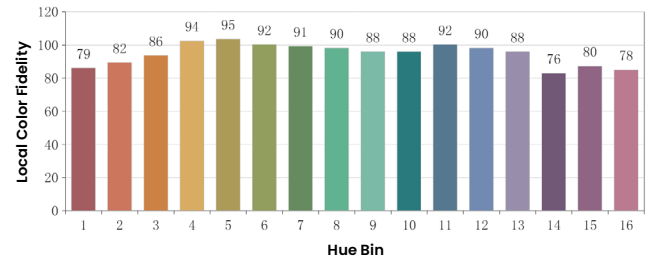
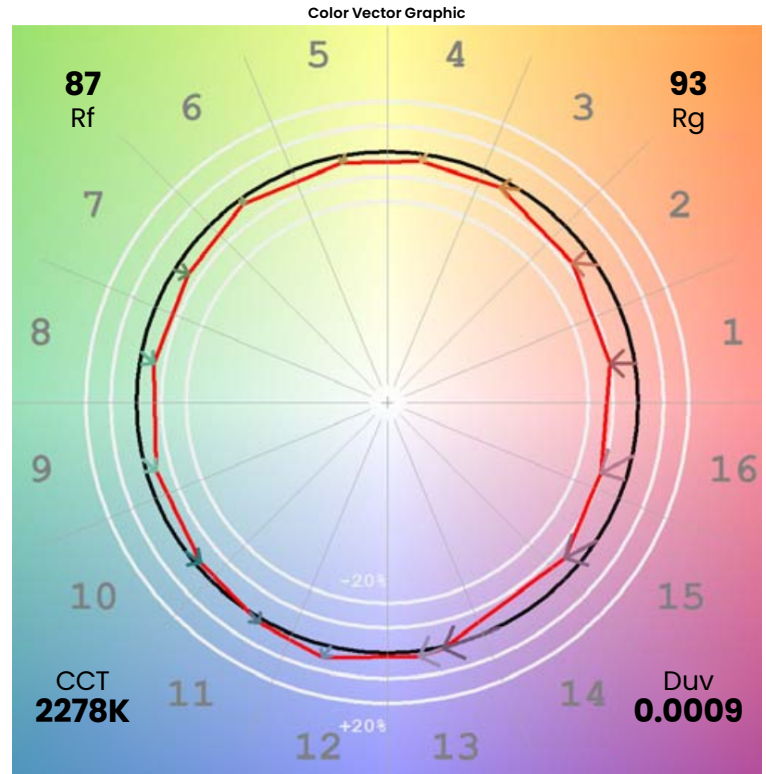
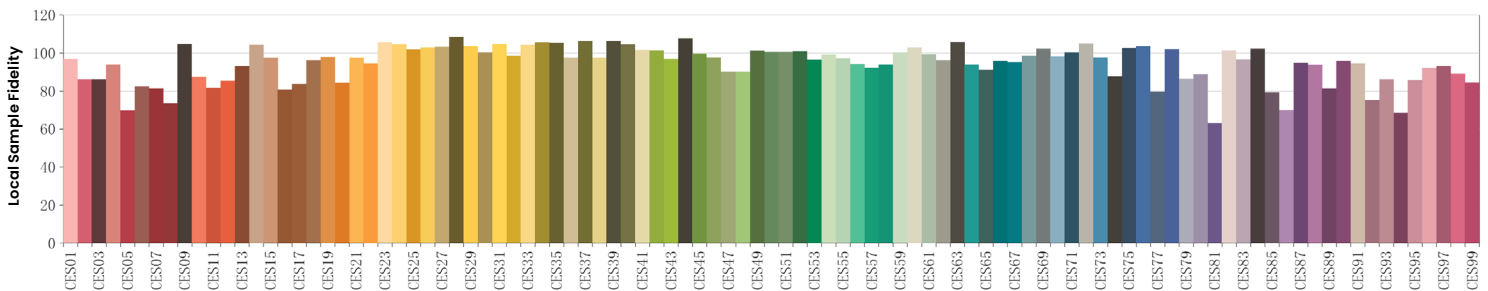
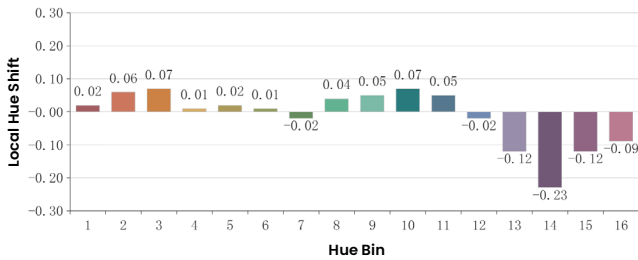
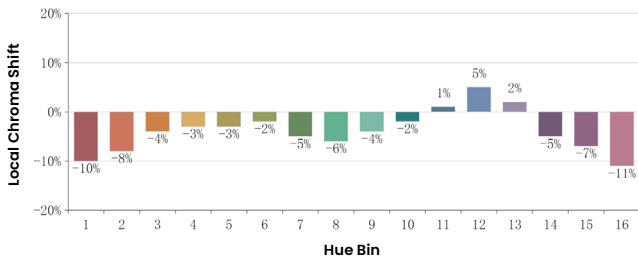
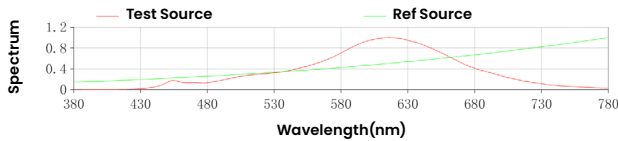
*The Wick Resistant Wire Ferrule is built into the lead wire, 4.5" (115mm) from the BL Neonview Termination Connection, for additional moisture ingress protection. Removal of the Wick Resistant Wire Ferrule may void your warranty.



Colorimetric Details (2200K LED)

| CCT | CRI | Rf | Rg |
|-------|-----|----|----|
| 2200K | 85 | 87 | 93 |

Rf: 87
Rg: 93
CCT: 2278K
Duv: 0.0009
u': 0.2848
v': 0.5362



*All results in accordance with ANSI C78.377 standard

