

# Cbox O4 2x100W

BL Power

Fully Assembled Power Box  
Dual Circuit, 2x100W, 24VDC, CV, Non-Dimmable

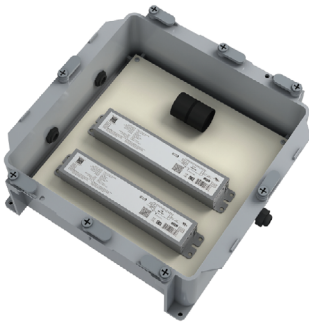


The Cbox are completely integrated, highly-customizable, fully cULus Listed Class 2 power and control boxes rated for Dry and Wet Locations. All Cbox enclosures arrive to site assembled and ready for quick wiring and install. All required components included. The O4 are configurable non-dimming power boxes. Integrate up to 200W through multiple Class 2 circuits.

Quick Ship    Wet Location

CLIENT	
PROJECT NAME	
LOCATION	
DATE	

## Product Detail



### Electrical

Input Voltage	110-277VAC
Input Frequency	50-60 Hz
Input Current	1.1A@110V, 0.44A@277V
Output Voltage	24VDC, Constant Voltage
Power	2 x 100W
Min. Power Draw	2 x 10W
Dimming	N/A
Max. Output Current	2 x 4.1A
Connections	18 AWG, Copper Conductors
Start-up Time	<1000ms
Protection	Cat. C3 Surge Location (10kA/10kV)
Surge Current Rating	20,000A, 8/20 µSec Wave
Rating (2mS)	540 Joules
Max. Clamping Voltage	925V
Ambient Temperature	-40°F to 122°F (-40°C to 50°C)
Max. Case Temperature	178°F (81°C)
Circuit	Class 2
Average Life	50,000 hours

### Mechanical

Housing Construction	PVC (enclosure)
Weight	12.5lbs (5.67kg)
Environmental	IP66

## Ordering

Product Code	Series	Power	Output	Input Voltage	IP Rating
CBO4ST	P	2x100W	24	UNI	IP66

## Dimensions

