

# Cbox J5 010V 30W

BL Power

Fully Assembled Power Box  
Single Circuit, 30W, 24VDC, CV, 0-10V Dimmable



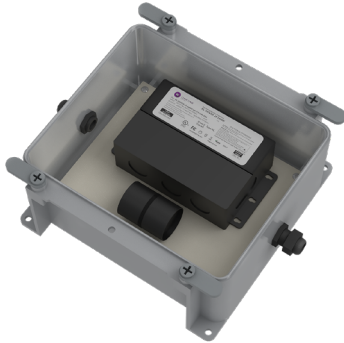
The Cbox are completely integrated, highly-customizable, fully cULus Listed Class 2 power and control boxes rated for Dry and Wet Locations. All Cbox enclosures arrive to site assembled and ready for quick wiring and install. All required components included. The Cbox J5 010V are configurable 0-10V dimmable power boxes.

Quick Ship

Wet Location

CLIENT	
PROJECT NAME	
LOCATION	
DATE	

## Product Detail



### Electrical

Input Voltage	100-277VAC
Input Frequency	47-63 Hz
Max Input Current	0.5A
Output Voltage	24VDC, Constant Voltage
Power	30W
Min. Power Draw	3W
Dimming	0-10V
Min. Dimming Level	0%
Max. Output Current	1.25A
Connections	16 AWG, Copper Conductors
Power Factor	0.95 - 0.99
Protection	Cat. C3 Surge Location (10kA/10kV)
Surge Current Rating	20,000A, 8/20 μSec Wave
Rating (2mS)	540 Joules
Max. Clamping Voltage	925V
Ambient Temperature	-40°F to 124°F (-40°C to 51°C)
Max. Case Temperature	140°F (60°C)
Circuit	Class 2

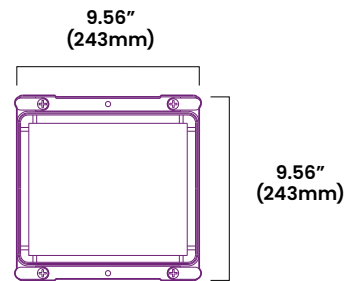
### Mechanical

Housing Construction	PVC (enclosure)
Weight	7.0lbs (3.17kg)
Environmental	IP66

## Ordering

Product Code	Series	Power	Output	Input Voltage	IP Rating
CBJ510	P	30W	24	UNI	IP66

## Dimensions



### BL LIGHTING ILLUMINATE EVERYTHING

111 - 8838 Heather St. Vancouver, BC, Canada. V6P 3S8  
P: 1-804-874-4405 E: info@bllighting.com  
Copyright © BL INNOVATIVE LIGHTING. All Rights Reserved.

Solid State Lighting is sensitive to power fluctuations. Surge protection is highly recommended for all LED lighting products and should be on a dedicated circuit to protect against premature failure. Lack of surge protection may void your warranty.

Designed & Assembled in North America.

Specifications subject to change without notice. Please refer to our website at [bllighting.com](http://bllighting.com) for current technical data.

For more information, please download the BL LIGHTING catalog

[bllighting.com](http://bllighting.com)

