

Cbox DMX O4 100W

BL Power

Fully Assembled Control+Power Box
Single Circuit, 100W, 24VDC, CV, DMX512 Enabled



The Cbox are completely integrated, highly-customizable, fully cULus Listed Class 2 power and control boxes rated for Dry and Wet Locations. All Cbox enclosures arrive to site assembled and ready for quick wiring and install. All required components included. The DMX O4 are configurable DMX512 enabled power boxes. Integrate up to 200W through multiple Class 2 circuits.

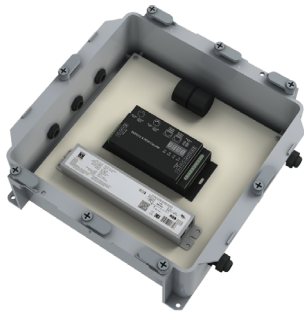
Quick Ship

Wet Location

DMX512

CLIENT	
PROJECT NAME	
LOCATION	
DATE	

Product Detail



Electrical

Input Voltage	110-277VAC
Input Frequency	50-60 Hz
Input Current	1.1A@110V, 0.44A@277V
Output Voltage	24VDC, Constant Voltage
Power	100W
Min. Power Draw	10W
Control	DMX512
Max. Output Current	4.1A
Connections	Screw Terminals 3 Pins XLR terminal 2xRJ45 Terminal
Start-up Time	<1000ms
Protection	Cat. C3 Surge Location (10kA/10kV)
Surge Current Rating	20,000A, 8/20 µSec Wave
Rating (2ms)	540 Joules
Max. Clamping Voltage	925V
Ambient Temperature	-4°F to 122°F (-20°C to 50°C)
Circuit	Class 2
Average Life	50,000 hours

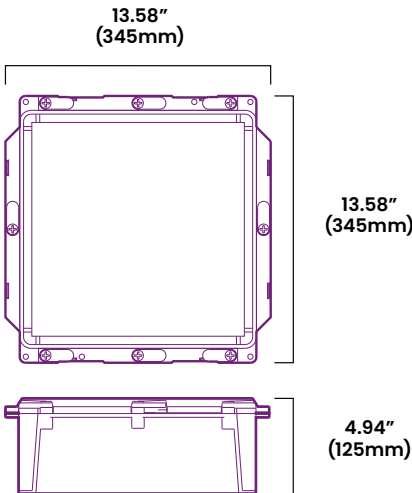
Mechanical

Housing Construction	PVC (enclosure)
Weight	11.5lbs (5.2kg)
Environmental	IP66

Ordering

Product Code	Series	Power	Output	Input Voltage	IP Rating
CBDMXO4	P	100W	24	UNI	IP66

Dimensions



BL LIGHTING
ILLUMINATE EVERYTHING

111 - 8838 Heather St. Vancouver, BC, Canada. V6P 3S8
P: 1-804-874-4405 E: info@bllighting.com
Copyright © BL INNOVATIVE LIGHTING. All Rights Reserved.

Solid State Lighting is sensitive to power fluctuations. Surge protection is highly recommended for all LED lighting products and should be on a dedicated circuit to protect against premature failure. Lack of surge protection may void your warranty.

Designed & Assembled in North America.

Specifications subject to change without notice. Please refer to our website at bllighting.com for current technical data.

For more information, please download the BL LIGHTING catalog

bllighting.com

