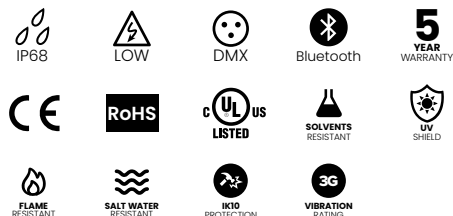


BL neonVIEW TUNABLE BRIGHT SIDE SI HB has a fully flexible Silicone encapsulated diffuser and is rated for a range of operating temperatures from -40° F to 131° F (-40° C to 55° C) for sustained ability to weather the elements, even in the most extreme environmental conditions. The flexible square shaped Silicone encapsulated diffuser bends horizontally alongside the light surface and is ideal for circular coves, contours and side-emitting light. The 120° beam angle delivers up to 167 lm/ft from 2200K – 5700K, and provides uniform, dot-free illumination.

Dot-free Seamless connections -40°F to 131°F (-40°C to 55°C) Tunable White

CLIENT	
PROJECT NAME	
LOCATION	
DATE	

## Product Detail



Lighting	Lamp	LED, SMD 3015
	LED's Per Foot	51 LEDs/ft (168 LEDs/m)
	Beam Angle	120°
	Average Life	50,000 Hours
Electrical	Controls	DMX, Bluetooth
	Input Voltage	24VDC
	Max Input Current	4.12A
	Connections	18AWG, Copper Conductors
	Power Cable Length	Standard 10ft (3m). Also available in 16ft (5m) and 32ft (10m)
Mechanical	Circuit	Class 2
	Housing Construction	Injection Moulded White Silicone
	Minimum Bend Radius	5.9" (150mm)
Environmental	Operating Temperature	-40°F to 131°F (-40°C to 55°C)
	Ingress Protection	IP68
	Impact Protection	IK10
	Vibration Rating	3G
	Resistance	UV, Flame, Solvents and Saltwater Resistant
	Certifications	cULus, CE, RoHS Compliant

## Performance

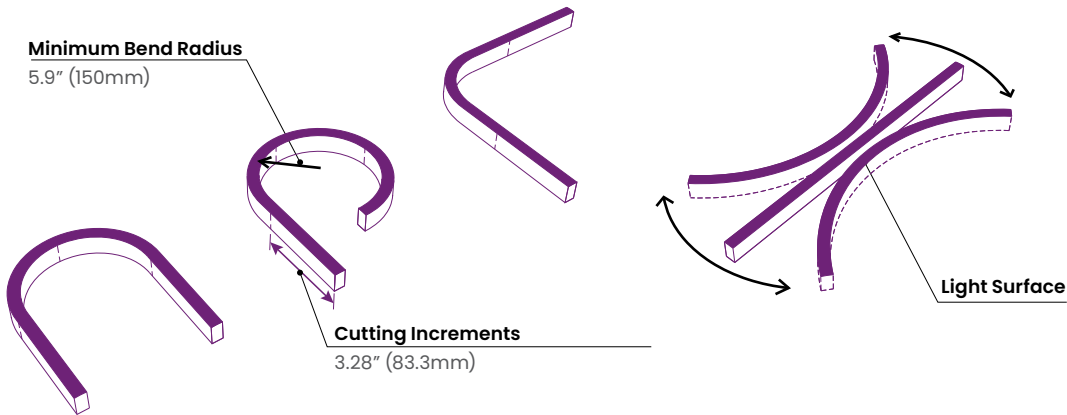
CCT/Color		2200K	5700K	2200K + 5700K
Power	W/FT (W/m)	-	-	3.66 (12)
Lumens	lm/FT (lm/m)	76 (250)	91 (300)	167 (548)
Efficacy	lm/W	-	-	46
CRI	CRI	80		
Increment	inch (mm)	3.28 (83.3)		
Max. Length	ft (m)	24ft 6in (7.5m)		

## Ordering

Product Code	CCT/Color	Lead Orientation	Mounting Accessories
BL neonVIEW TW BR SL SI HB	2200K-5700K	NVS BRSL BC 68 = Back Lead NVS BRSL EC 68 = End Lead NVS BRSL RC 68 = Right Side Lead NVS BRSL LC 68 = Left Side Lead	NVBRSL HB CPS = Mounting Clip NVBRSL HB CHS = Mounting Channel NVBRSL HB RCPS = Recessed Mounting Clip NVBRSL HB RCHS = Recessed Mounting Channel

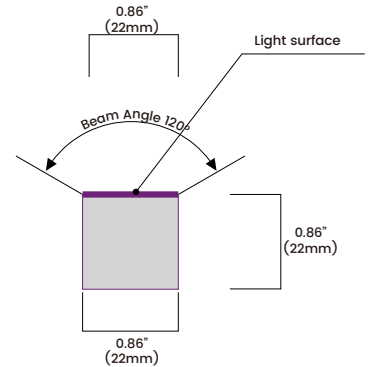


## Minimum Bend Radius and Bend Orientation



**BL neonVIEW Bright SIDE HB Series bends horizontally**  
Vertical bend option also available

## Beam Angle & Viewing Angle

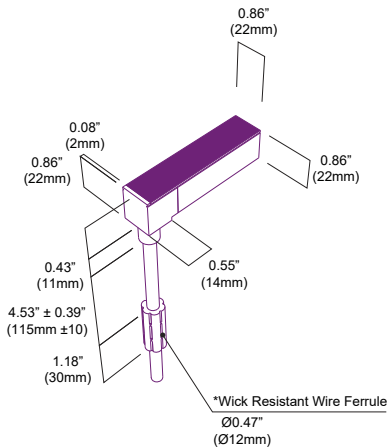


Average Beam Angle (50%): 113.3°

## Dimensions & Lead Orientations

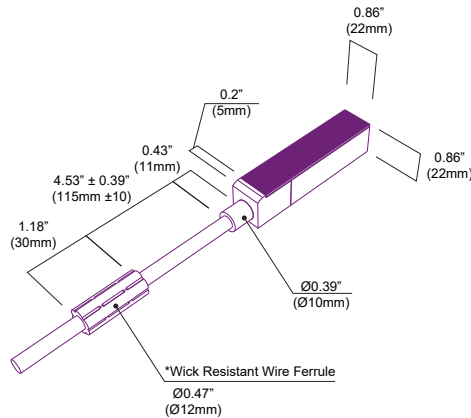
### Back Lead

NVS BRSL BC 68

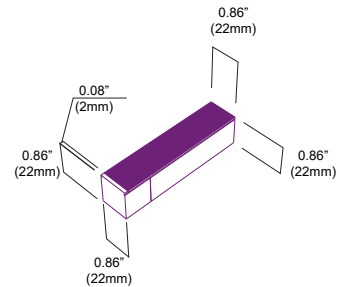


### End Lead

NVS BRSL EC 68

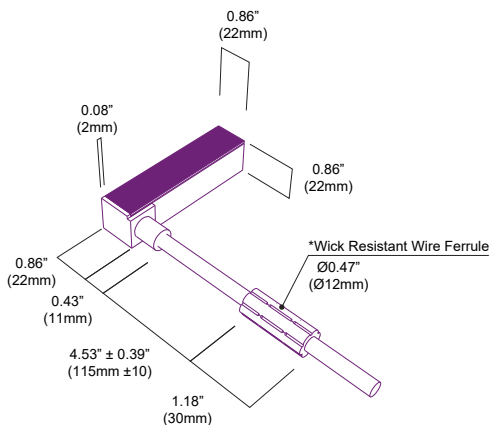


### End Cap



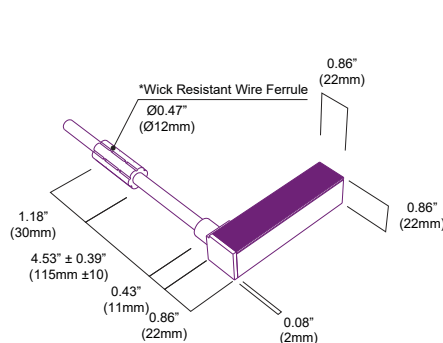
### Right Side Lead

NVS BRSL RC 68



### Left Side Lead

NVS BRSL LC 68



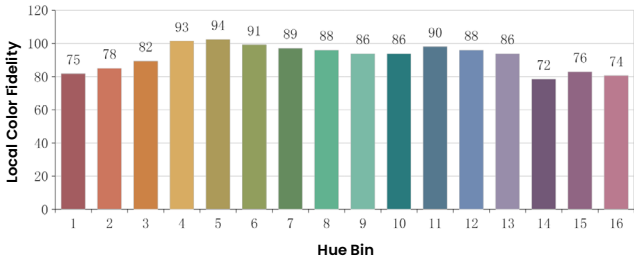
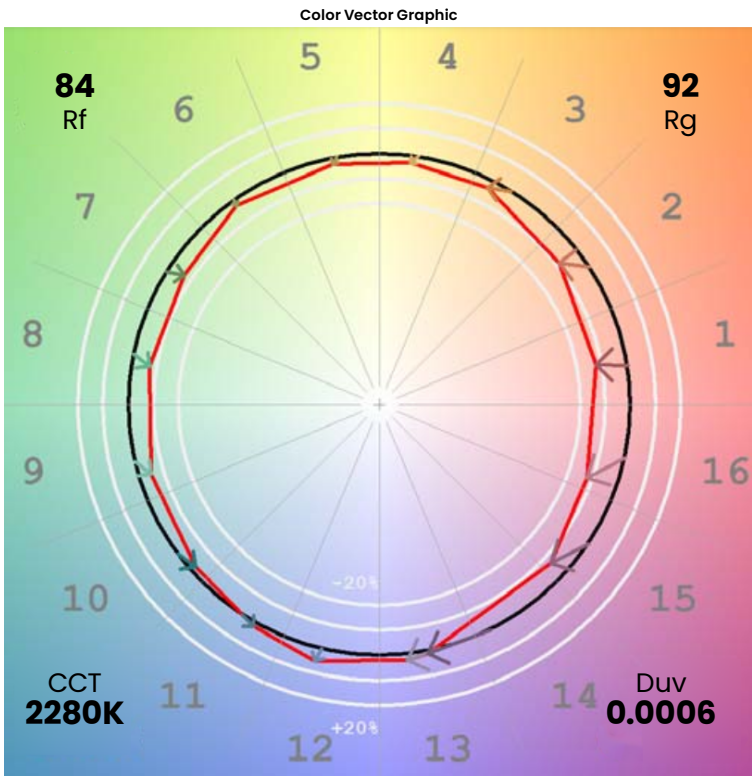
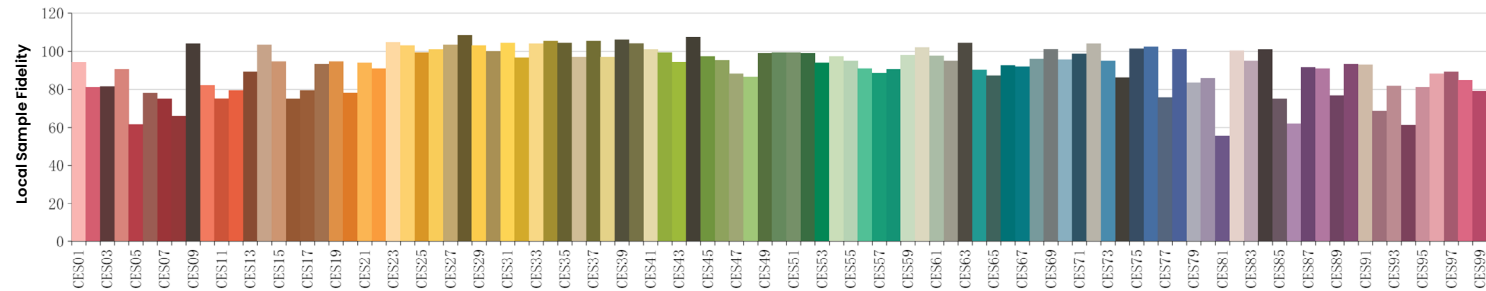
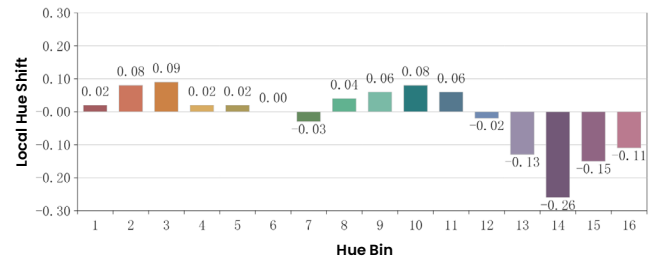
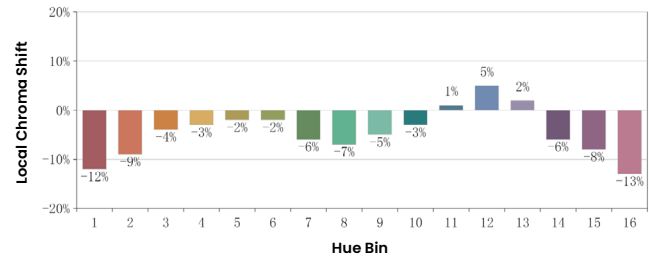
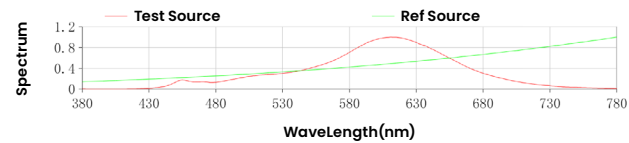
\*The Wick Resistant Wire Ferrule is built into the lead wire, 4.5" (115mm) from the BL neonVIEW Termination Connection, for additional moisture ingress protection. Removal of the Wick Resistant Wire Ferrule may void your warranty.



Colorimetric Details (2200K LED)

CCT	CRI	Rf	Rg
2280K	82	84	92

Rf: 84  
Rg: 92  
CCT: 2280K  
Duv: 0.006  
u': 0.2848  
v': 0.5358



\*All results in accordance with ANSI C78.377 standard

