

# BL neonVIEW SIDE SI SC L2

Diffused, Flexible, Linear LED Lighting,  
24VDC, Constant Voltage, Vertical Bend,  
Side Profile, Silicone, Single Color, High Output

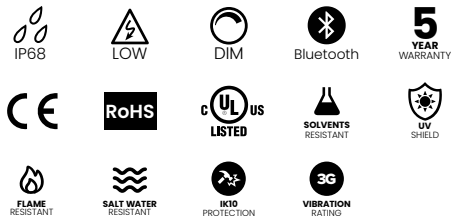


BL neonVIEW SIDE SI SC L2 has a fully flexible Silicone encapsulated diffuser and is rated for a range of operating temperatures from -40° F to 131° F (-40° C to 55° C) for sustained ability to weather the elements, even in the most extreme environmental conditions. The unique vertical bending across the flat light surface is ideal for circular coves, contours and side-emitting light. The 120° beam angle delivers up to 244 lm/ft and provides uniform, dot-free illumination. BL neonVIEW SIDE SI SC is ideal for building outlines, facades, signage and exterior architectural accents.

**Dot-free** **Seamless connections** **-40°F to 131°F (-40°C to 55°C)** **High Output**

<b>CLIENT</b>	
<b>PROJECT NAME</b>	
<b>LOCATION</b>	
<b>DATE</b>	

## Product Detail



<b>Lighting</b>	Lamp	LED, SMD 2835
	LED's Per Foot	33 LEDs/ft (108 LEDs/m)
	Beam Angle	120°
	Average Life	50,000 Hours
<b>Electrical</b>	Controls	0-10V, MLV, ELV, Phase-Cut, Triac, DMX, Bluetooth
	Input Voltage	24VDC
	Max Input Current	4.12A
	Connections	18AWG, Copper Conductors
	Power Cable Length	Standard 10ft (3m). Also available in 16ft (5m) and 32ft (10m)
<b>Mechanical</b>	Circuit	Class 2
	Housing Construction	Injection Moulded White Silicone
	Minimum Bend Radius	5.9" (150mm)
	Operating Temperature	-40°F to 131°F (-40°C to 55°C)
<b>Environmental</b>	Ingress Protection	IP68
	Impact Protection	IK10
	Vibration Rating	3G
	Resistance	UV, Flame, Solvents and Saltwater Resistant
	Certifications	cULus, CE, RoHS Compliant

## Performance

CCT/Color		2200K	2700K	3000K	3500K	4000K	5700K
<b>Power</b>	W/FT (W/m)	4.57 (15)					
<b>Lumens</b>	lm/FT (lm/m)	183 (600)	213 (698)	213 (698)	244 (800)	244 (800)	244 (800)
<b>Efficacy</b>	lm/W	40	47	47	53	53	53
<b>CRI</b>	CRI	80					
<b>Increment</b>	inch (mm)	2.19 (55.6)					
<b>Max. Length</b>	ft (m)	19ft 6in (5.95m)					

## Ordering

Product Code	CCT/Color	Lead Orientation	Mounting Accessories*
BL neonVIEW SL SI L2			
	2200K	NVS SL BC 68 = Back Lead	NVSL CPS = Mounting Clip
	2700K	NVS SL EC 68 = End Lead	NVSL CHS = Mounting Channel
	3000K	NVS SL RC 68 = Right Side Lead	NVSL RCPS = Recessed Mounting Clip
	3500K	NVS SL LC 68 = Left Side Lead	NVSL RCHS = Recessed Mounting Channel
	4000K		NVSL FCHS AL = Flexible Mounting Channel
	5700K		

\* Stainless steel and composite mounting options are also available.

### BL LIGHTING ILLUMINATE EVERYTHING

111 - 8838 Heather St. Vancouver, BC, Canada. V6P 3S8  
P: 1-804-874-4405 E: info@bllighting.com  
Copyright © BL INNOVATIVE LIGHTING. All Rights Reserved.

Solid State Lighting is sensitive to power fluctuations. Surge protection is highly recommended for all LED lighting products and should be on a dedicated circuit to protect against premature failure. Lack of surge protection may void your warranty.

Designed & Assembled in North America.

Specifications subject to change without notice. Please refer to our website at bllighting.com for current technical data.

For more information,  
please download the  
BL LIGHTING catalog

bllighting.com



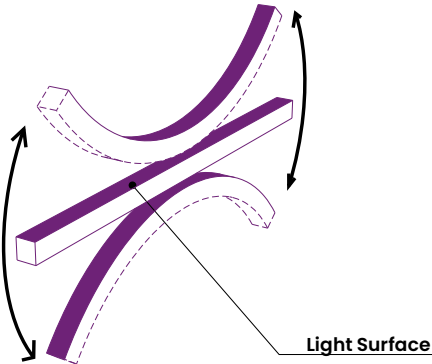
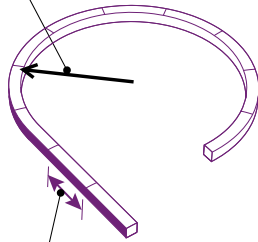
## Minimum Bend Radius and Bend Orientation

### Minimum Bend Radius

5.9" (150mm)

### Cutting Increments

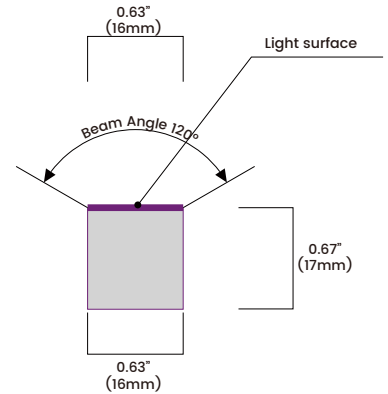
2.19" (55.6mm)



**BL neonVIEW SIDE Series bends vertically**

Horizontal bend option also available (HB Version)

## Beam Angle & Viewing Angle

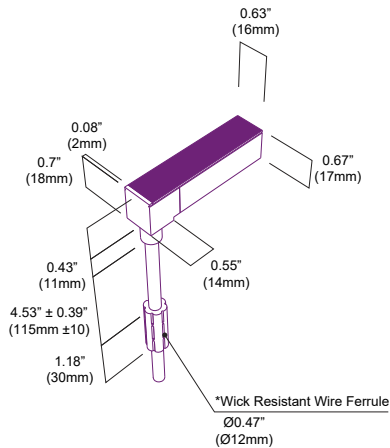


Average Beam Angle (50%): 113.2°

## Dimensions & Lead Orientations

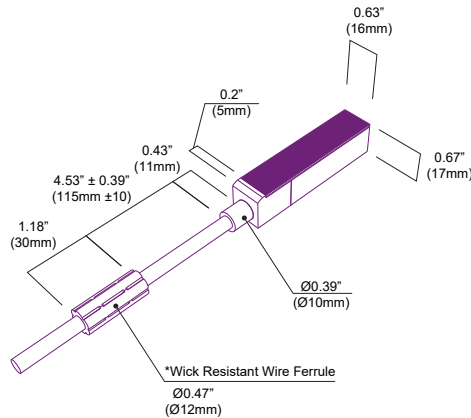
### Back Lead

NVS SL BC 68

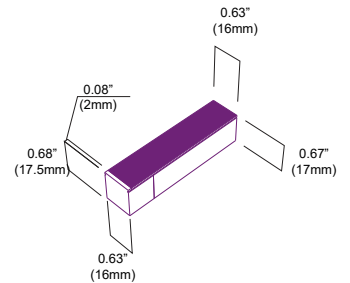


### End Lead

NVS SL EC 68

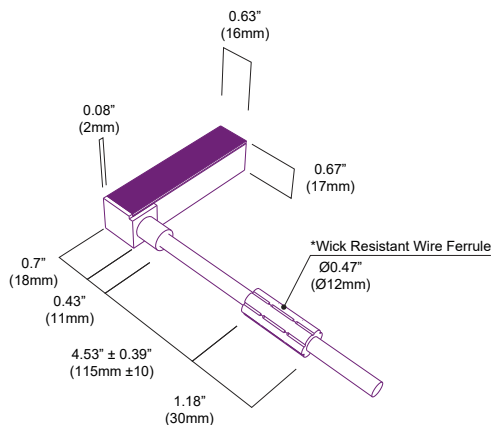


### End Cap



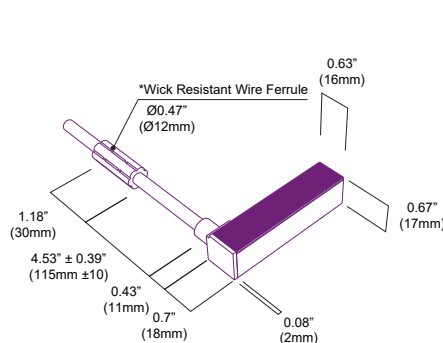
### Right Side Lead

NVS SL RC 68



### Left Side Lead

NVS SL LC 68



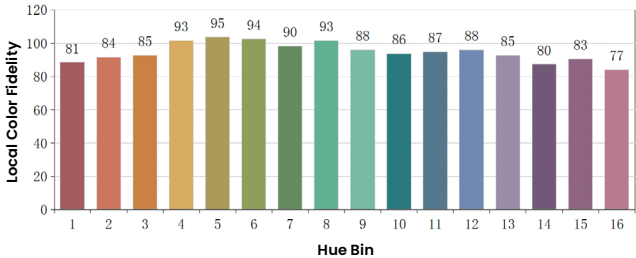
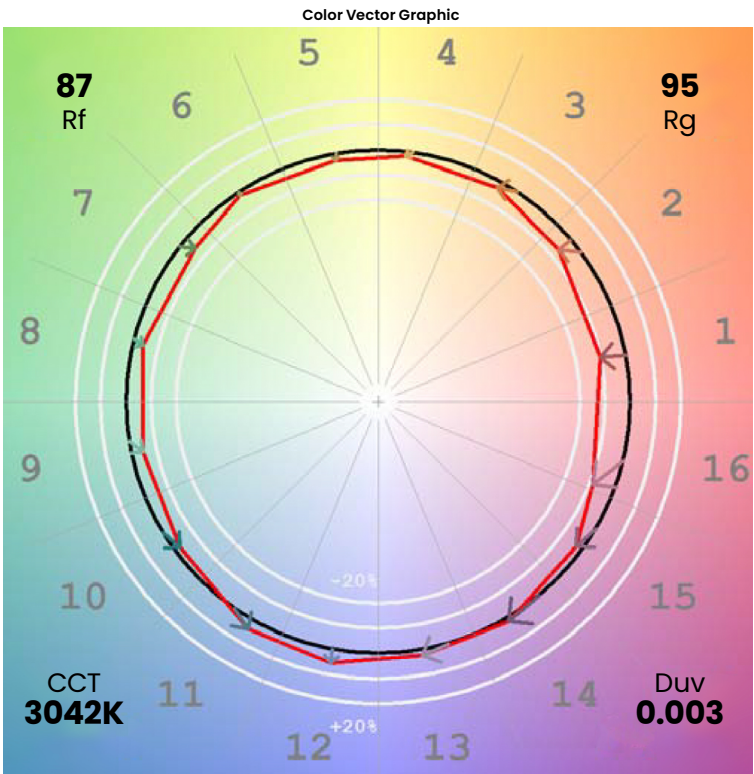
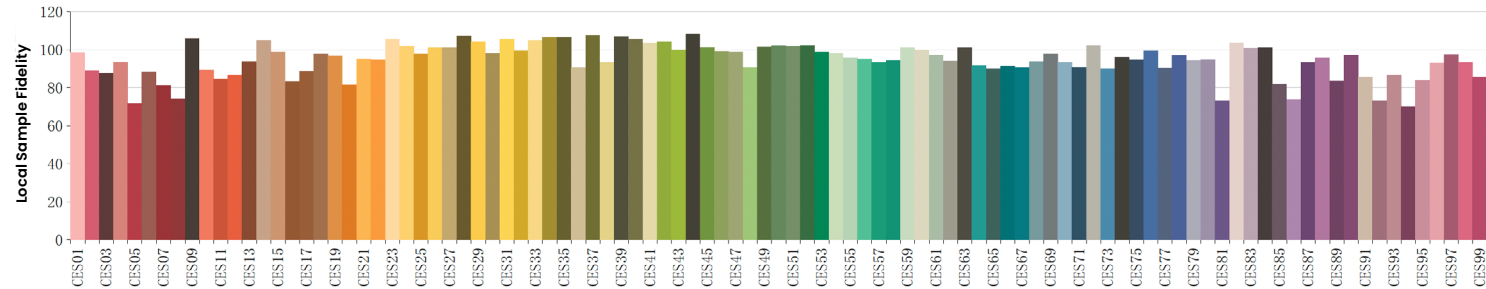
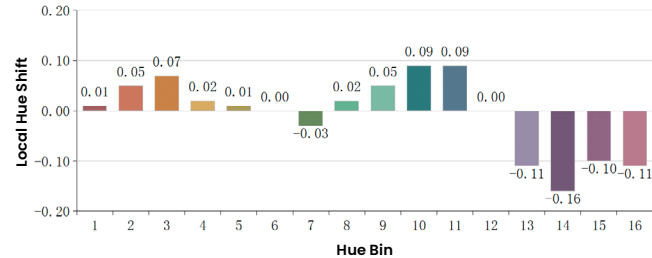
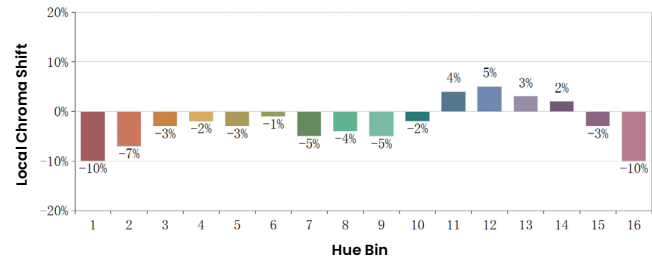
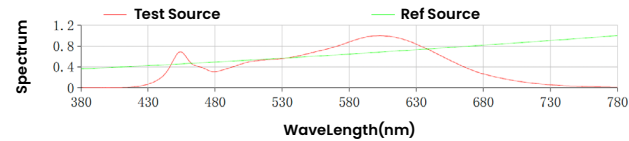
\*The Wick Resistant Wire Ferrule is built into the lead wire, 4.5" (115mm) from the BL neonVIEW Termination Connection, for additional moisture ingress protection. Removal of the Wick Resistant Wire Ferrule may void your warranty.



Colorimetric Details

CCT	CRI	Rf	Rg
3000K	85	87	95

Rf: 87  
Rg: 95  
CCT: 3042K  
Duv: 0.003  
u': 0.2397  
v': 0.5149



\*All results in accordance with ANSI C78.377 standard

