

# BL neonVIEW SAUNA SIDE SI SC HB

Diffused, Flexible, Linear LED Lighting,  
24VDC, Constant Voltage, Horizontal Bend,  
Side Profile, Silicone, Single Color, Sauna Rated

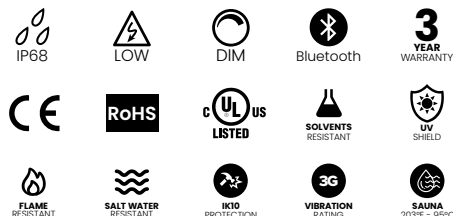


Create seamless lines of light, up to 48ft in length, with marine-grade IP68 wet location rated injection molded terminations. With safe 24VDC operation, a low power draw of just 1.83 watts per foot, and superior resistance to humidity and heat up to 203°F (95°C), BL neonVIEW SAUNA SIDE SI SC HB is fully dimmable, long lasting, and ideal for providing calm, revitalizing lighting in spas, saunas, steam rooms and hot springs.

CLIENT	
PROJECT NAME	
LOCATION	
DATE	

Dot-free Seamless connections -40°F to 203°F (-40°C to 95°C) Sauna Rated

## Product Detail



Lighting	Lamp	LED, SMD 2835
	LED's Per Foot	33 LEDs/ft (108 LEDs/m)
	Beam Angle	120°
	Average Life	50,000 Hours
Electrical	Controls	0-10V, MLV, ELV, Phase-Cut, Triac, DMX, Bluetooth
	Input Voltage	24VDC
	Max Input Current	4.12A (White)
	Connections	18AWG, Copper Conductors
	Power Cable Length	Standard 10ft (3m). Also available in 16ft (5m) and 32ft (10m)
Mechanical	Circuit	Class 2
	Housing Construction	Injection Moulded White Silicone
	Minimum Bend Radius	5.9" (150mm)
	Operating Temperature	-40°F to 203°F (-40°C to 95°C)
Environmental	Ingress Protection	IP68
	Impact Protection	IK10
	Vibration Rating	3G
	Resistance	UV, Flame, Solvents and Saltwater Resistant
	Certifications	cULus, CE, RoHS Compliant

## Performance

CCT/Color		2200K	2700K	3000K	3500K	4000K	5700K
Power	W/FT (W/m)	1.83 (6)					
Lumens	lm/FT (lm/m)	70 (230)	79 (260)	79 (260)	79 (260)	79 (260)	79 (260)
Efficacy	lm/W	38	43	43	43	43	43
CRI	CRI	80					
Increment	inch (mm)	2.19 (55.6)					
Max. Length	ft (m)	32ft 6in (10m)*					

\*48ft (14.6m) for non sauna applications.

## Ordering

Product Code	CCT/Color	Lead Orientation		Mounting Accessories*	
BL neonVIEW SN SL SI HB					
	2200K	NVS SL BC 68	= Back Lead	NVSL CPS	= Mounting Clip
	2700K	NVS SL EC 68	= End Lead	NVSL CHS	= Mounting Channel
	3000K	NVS SL RC 68	= Right Side Lead	NVSL RCPS	= Recessed Mounting Clip
	3500K	NVS SL LC 68	= Left Side Lead	NVSL RCHS	= Recessed Mounting Channel
	4000K			NVSL FCHS AL	= Flexible Mounting Channel
	5700K				

\* Stainless steel and composite mounting options are also available.

## BL LIGHTING ILLUMINATE EVERYTHING

111 - 8838 Heather St. Vancouver, BC, Canada. V6P 3S8  
P: 1-804-874-4405 E: info@bllighting.com  
Copyright © BL INNOVATIVE LIGHTING. All Rights Reserved.

Solid State Lighting is sensitive to power fluctuations. Surge protection is highly recommended for all LED lighting products and should be on a dedicated circuit to protect against premature failure. Lack of surge protection may void your warranty.

Designed & Assembled in North America.

Specifications subject to change without notice. Please refer to our website at bllighting.com for current technical data.

For more information, please download the BL LIGHTING catalog

bllighting.com



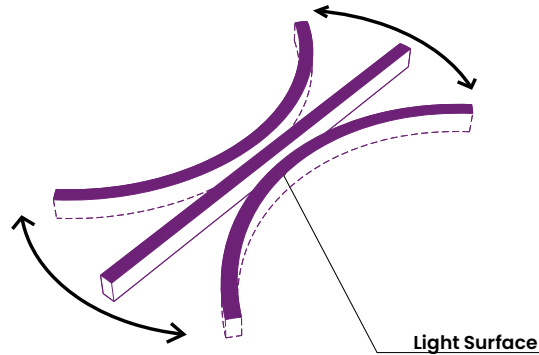
## Minimum Bend Radius and Bend Orientation

### Minimum Bend Radius

5.9" (150mm)

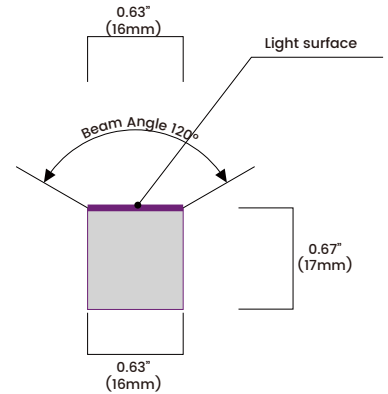
### Cutting Increments

2.19" (55.6mm)



**BL neonVIEW SIDE HB Series bends horizontally**  
Vertical bend option also available

## Beam Angle & Viewing Angle

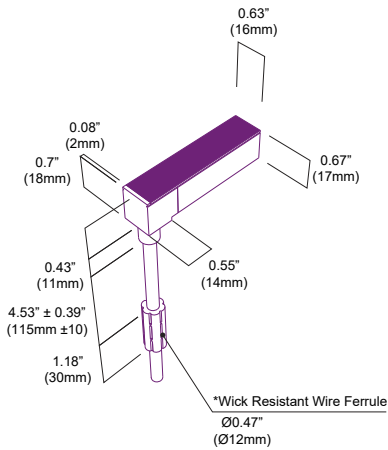


Average Beam Angle (50%): 112.3°

## Dimensions & Lead Orientations

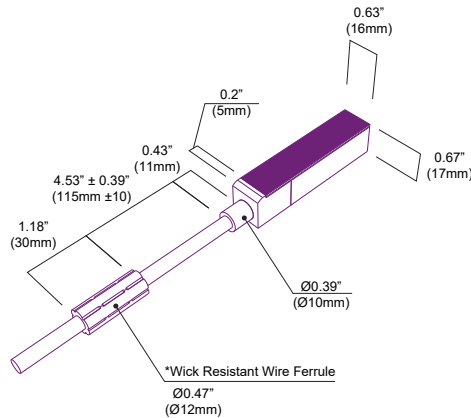
### Back Lead

NVS SL BC 68

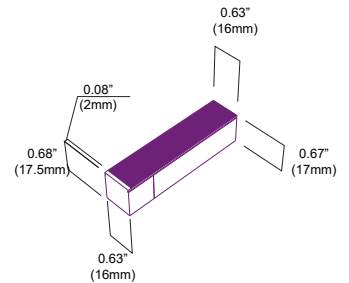


### End Lead

NVS SL EC 68

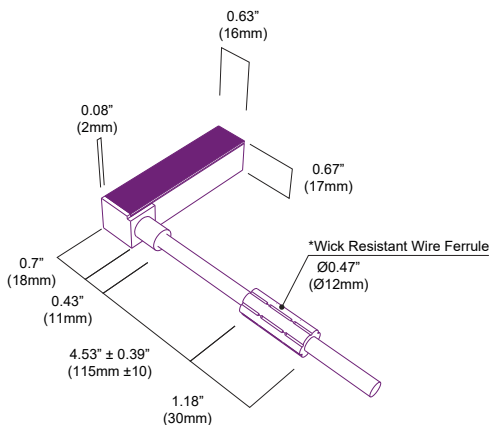


### End Cap



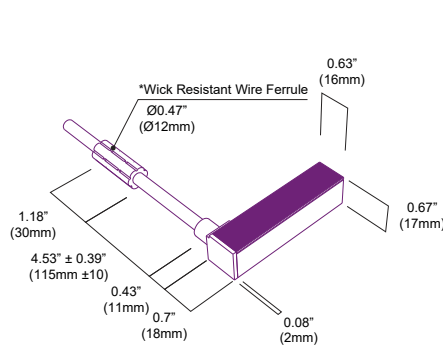
### Right Side Lead

NVS SL RC 68



### Left Side Lead

NVS SL LC 68



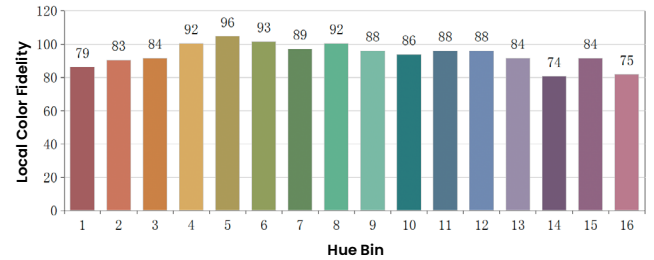
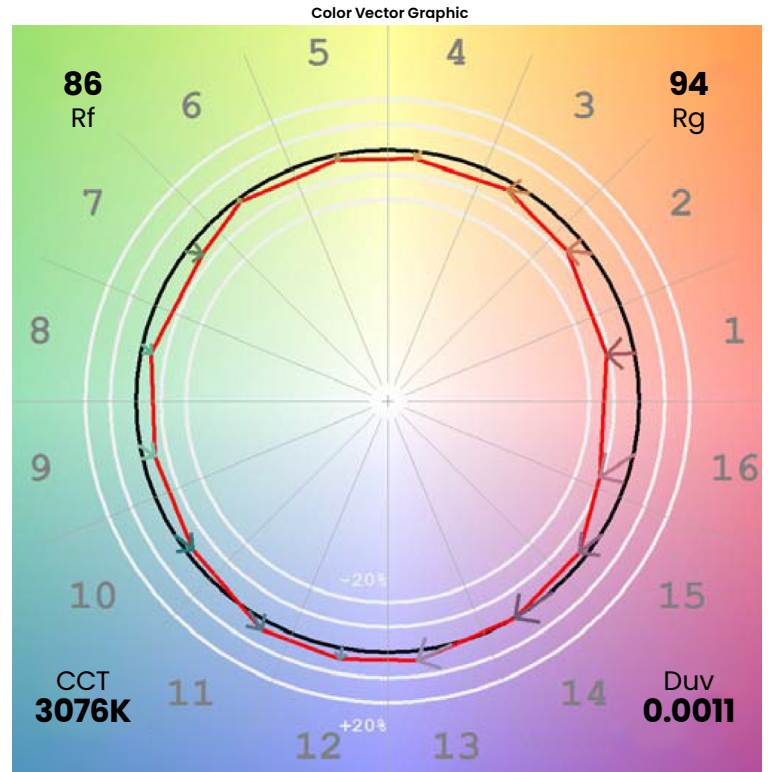
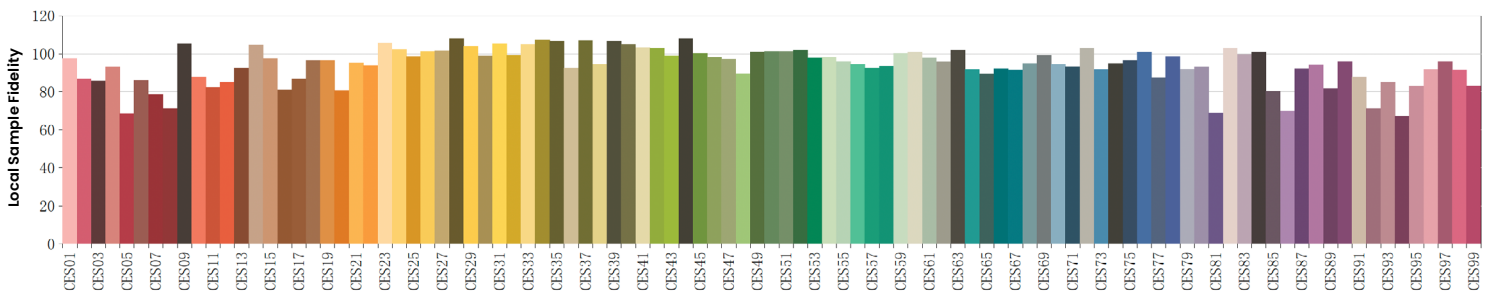
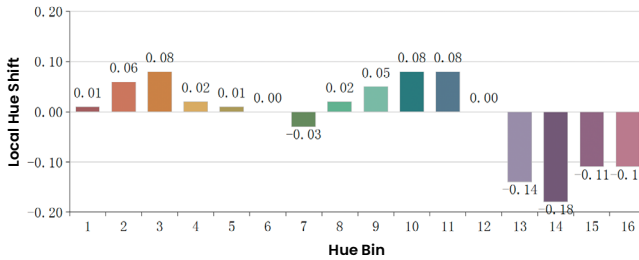
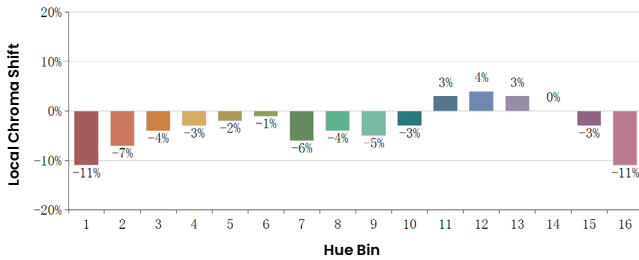
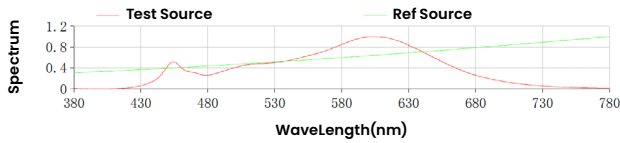
\*The Wick Resistant Wire Ferrule is built into the lead wire, 4.5" (115mm) from the BL neonVIEW Termination Connection, for additional moisture ingress protection. Removal of the Wick Resistant Wire Ferrule may void your warranty.



## Colorimetric Details

CCT	CRI	Rf	Rg
3000K	85	86	94

Rf: 86  
Rg: 94  
CCT: 3076K  
Duv: 0.0011  
u': 0.2475  
v': 0.5214



\*All results in accordance with ANSI C78.377 standard

## BL LIGHTING ILLUMINATE EVERYTHING

111 - 8838 Heather St. Vancouver, BC, Canada. V6P 3S8  
P: 1-804-874-4405 E: info@bllighting.com  
Copyright © BL INNOVATIVE LIGHTING. All Rights Reserved.

Solid State Lighting is sensitive to power fluctuations. Surge protection is highly recommended for all LED lighting products and should be on a dedicated circuit to protect against premature failure. Lack of surge protection may void your warranty.

Designed & Assembled in North America.

Specifications subject to change without notice. Please refer to our website at bllighting.com for current technical data.

For more information, please download the BL LIGHTING catalog

bllighting.com

