

# BL neonVIEW SAUNA DOME SI SC

Diffused, Flexible, Linear LED Lighting,  
24VDC, Constant Voltage  
Dome Profile, Silicone, Single Color, Sauna Rated



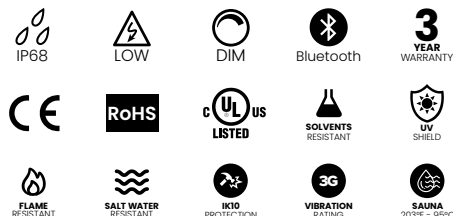
Create seamless lines of light, up to 48ft in length, with marine-grade IP68 wet location rated injection molded terminations. With safe 24VDC operation, a low power draw of just 1.83 watts per foot, and superior resistance to humidity and heat up to 203°F (95°C), BL neonVIEW SAUNA DOME SI SC is fully dimmable, long lasting, and ideal for providing calm, revitalizing lighting in spas, saunas, steam rooms and hot springs.

**Dot-free** **Seamless connections** **Wide 270 ° viewing angle**

**-40°F to 203°F (-40°C to 95°C)** **Sauna Rated**

<b>CLIENT</b>	
<b>PROJECT NAME</b>	
<b>LOCATION</b>	
<b>DATE</b>	

## Product Detail



<b>Lighting</b>	Lamp	LED, SMD 2835
	LED's Per Foot	21 LEDs/ft (72 LEDs/m)
	Beam Angle	160°
	Average Life	50,000 Hours
<b>Electrical</b>	Controls	0-10V, MLV, ELV, Phase-Cut, Triac, DMX, Bluetooth
	Input Voltage	24VDC
	Max Input Current	4.12A (White)
	Connections	18AWG, Copper Conductors
	Power Cable Length	Standard 10ft (3m). Also available in 16ft (5m) and 32ft (10m)
<b>Mechanical</b>	Circuit	Class 2
	Housing Construction	Injection Moulded White Silicone
	Minimum Bend Radius	2.25" (60mm)
	Operating Temperature	-40°F to 203°F (-40°C to 95°C)
<b>Environmental</b>	Ingress Protection	IP68
	Impact Protection	IK10
	Vibration Rating	3G
	Resistance	UV, Flame, Solvents and Saltwater Resistant
	Certifications	cULus, CE, RoHS Compliant

## Performance

CCT/Color		2200K	2700K	3000K	3500K	4000K	5700K
<b>Power</b>	W/FT (W/m)	1.83 (6)					
<b>Lumens</b>	lm/FT (lm/m)	70 (230)	85 (280)	85 (280)	85 (280)	85 (280)	85 (280)
<b>Efficacy</b>	lm/W	38	46	46	46	46	46
<b>CRI</b>	CRI	80+					
<b>Increment</b>	inch (mm)	3.28 (83.3)					
<b>Max. Length</b>	ft (m)	32ft 6in (10m)*					

\* 48ft (14.6m) for non sauna applications.

## Ordering

Product Code	CCT	Lead Orientation		Mounting Accessories*	
BL neonVIEW SN DM SI					
	2200K	NVS DM BC 68	= Back Lead	NV CPS	= Mounting Clip
	2700K	NVS DM EC 68	= End Lead	NV CHS	= Mounting Channel
	3000K	NVS DM RC 68	= Right Side Lead	NV RCPS	= Recessed Mounting Clip
	3500K	NVS DM LC 68	= Left Side Lead	NV RCHS	= Recessed Mounting Channel
	4000K			NV FCHS AL	= Flexible Mounting Channel
	5700K				

\* Stainless steel and composite mounting options are also available.

## BL LIGHTING ILLUMINATE EVERYTHING

111 - 8838 Heather St. Vancouver, BC, Canada. V6P 3S8  
P: 1-804-874-4405 E: info@bllighting.com  
Copyright © BL INNOVATIVE LIGHTING. All Rights Reserved.

Solid State Lighting is sensitive to power fluctuations. Surge protection is highly recommended for all LED lighting products and should be on a dedicated circuit to protect against premature failure. Lack of surge protection may void your warranty.

Designed & Assembled in North America.

Specifications subject to change without notice. Please refer to our website at bllighting.com for current technical data.

For more information, please download the BL LIGHTING catalog

bllighting.com



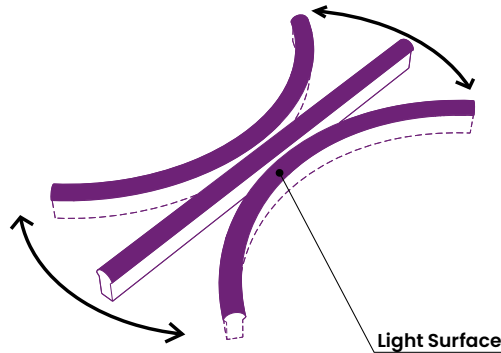
## Minimum Bend Radius and Bend Orientation

### Minimum Bend Radius

2.25" (60mm)

### Cutting Increments

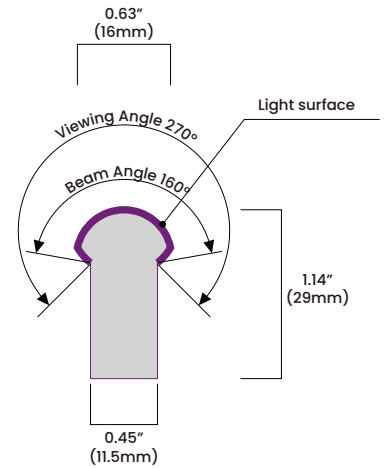
3.28" (83.3mm)



**BL neonVIEW DOME Series bends horizontally**

Vertical bend option available on BL neonVIEW SIDE Series

## Beam Angle & Viewing Angle

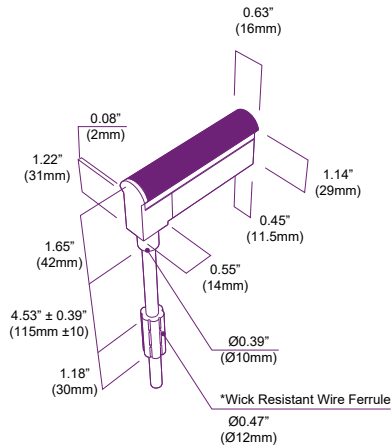


Average Beam Angle (50%): 141.9°

## Dimensions & Lead Orientations

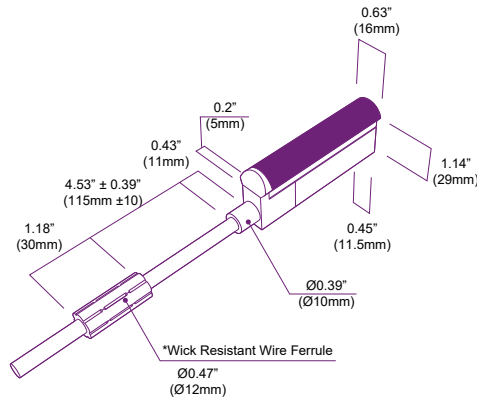
### Back Lead

NVS DM BC 68

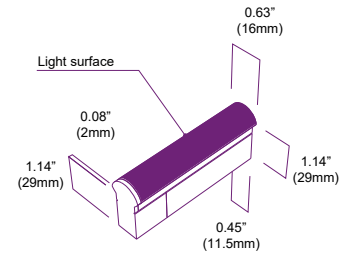


### End Lead

NVS DM EC 68

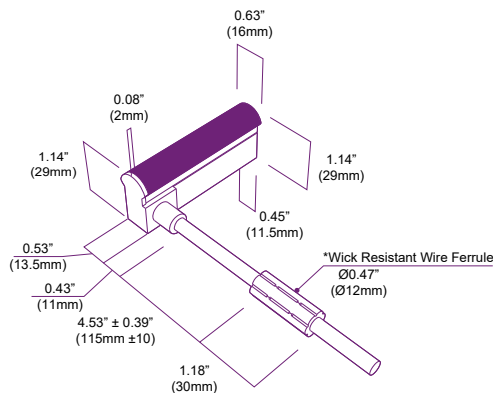


### End Cap



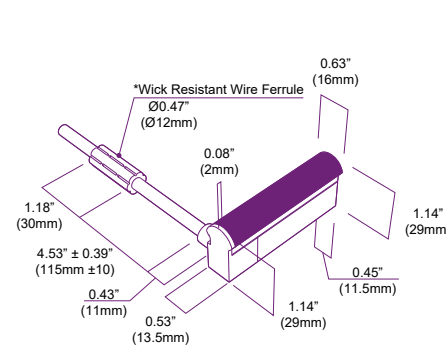
### Right Side Lead

NVS DM RC 68



### Left Side Lead

NVS DM LC 68



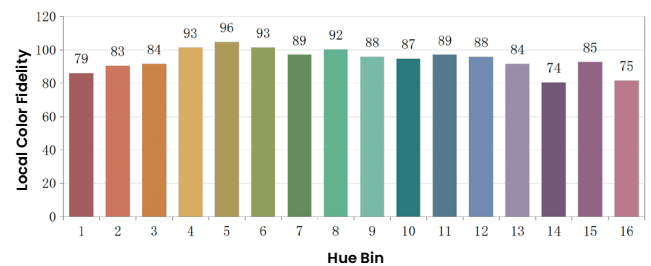
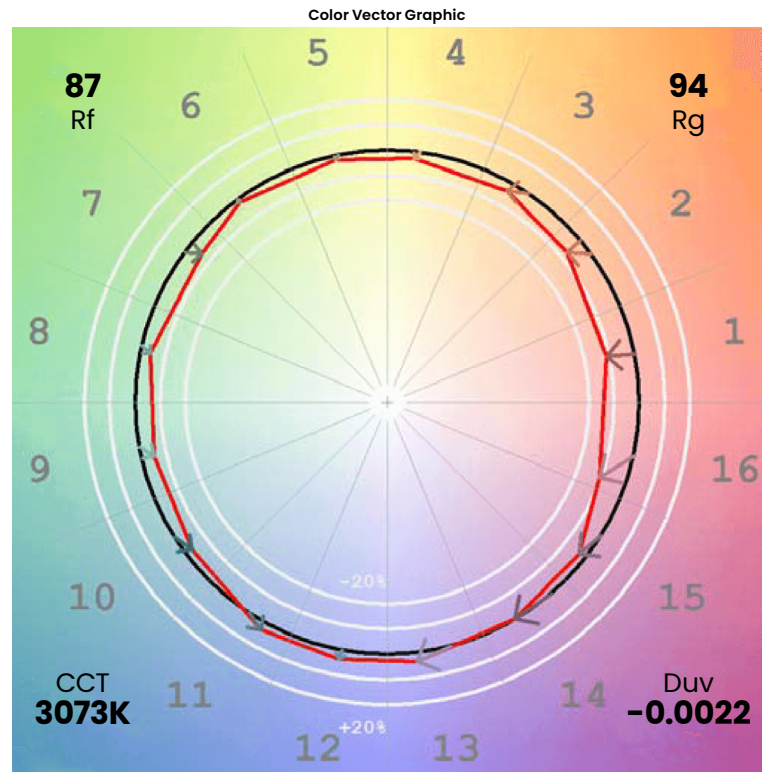
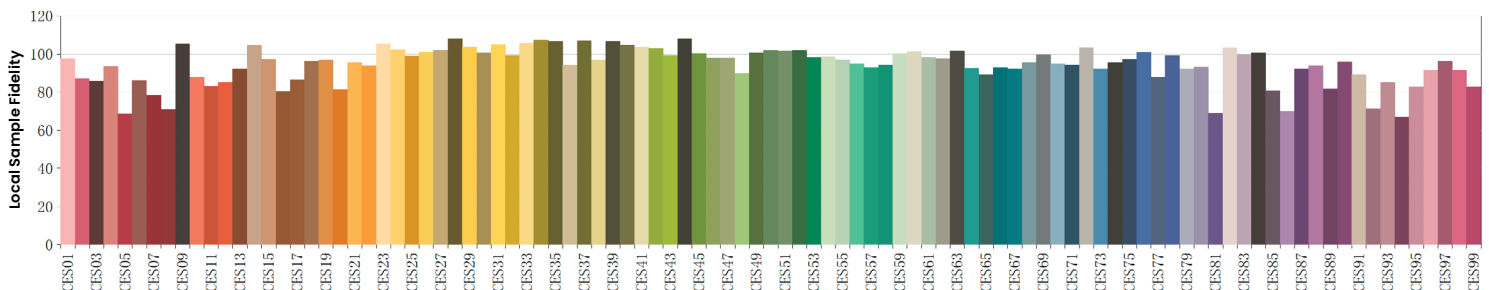
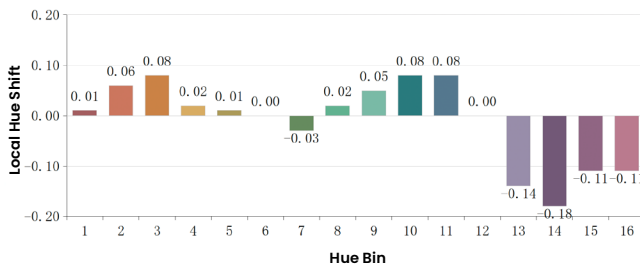
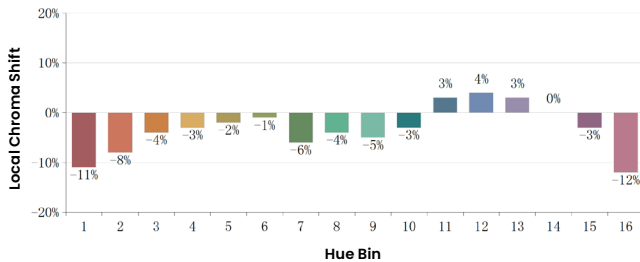
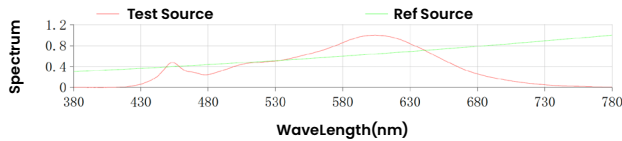
\*The Wick Resistant Wire Ferrule is built into the lead wire, 4.5" (115mm) from the BL neonVIEW Termination Connection, for additional moisture ingress protection. Removal of the Wick Resistant Wire Ferrule may void your warranty.



## Colorimetric Details

CCT	CRI	Rf	Rg
3000K	85	87	94

Rf: 87  
Rg: 94  
CCT: 3073K  
Duv: -0.0022  
u': 0.2473  
v': 0.5228



\*All results in accordance with ANSI C78.377 standard

## BL LIGHTING ILLUMINATE EVERYTHING

111 - 8838 Heather St. Vancouver, BC, Canada. V6P 3S8  
P: 1-804-874-4405 E: info@bllighting.com  
Copyright © BL INNOVATIVE LIGHTING. All Rights Reserved.

Solid State Lighting is sensitive to power fluctuations. Surge protection is highly recommended for all LED lighting products and should be on a dedicated circuit to protect against premature failure. Lack of surge protection may void your warranty.

Designed & Assembled in North America.

Specifications subject to change without notice. Please refer to our website at bllighting.com for current technical data.

For more information, please download the BL LIGHTING catalog

bllighting.com

