

BL neonVIEW BRIGHT SIDE SI SC L4

Diffused, Flexible, Linear LED Lighting,
24VDC, Constant Voltage, Vertical Bend,
Bright Side Profile, Silicone, Single Color

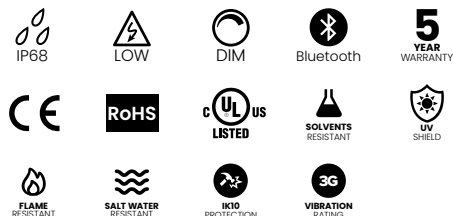


Where high light levels are essential, BL neonVIEW BRIGHT SIDE SI SC L4 is the solution, with a wider profile lens delivering over 427 lm/ft of uniform, dot-free illumination. The unique vertical bending direction curves across the flat light surface and is perfect for circles, contours and side-emitting light. The flexible, square shaped Silicone encapsulated diffuser shines a vivid line of light with a 120° beam distribution and is rated for a range of operating temperatures from -40° F to 113° F (-40° C to 45° C) and IP68 wet location rated injection molded terminations for sustained ability to weather the elements, even in the most extreme environmental conditions.

Dot-free Seamless connections -40°F to 113°F (-40°C to 45°C)

| | |
|--------------|--|
| CLIENT | |
| PROJECT NAME | |
| LOCATION | |
| DATE | |

Product Detail



| | | |
|---------------|-----------------------|--|
| Lighting | Lamp | LED, SMD 2835 |
| | LED's Per Foot | 43 LEDs/ft (140 LEDs/m) |
| | Beam Angle | 120° |
| | Average Life | 50,000 Hours |
| Electrical | Controls | 0-10V, MLV, ELV, Phase-Cut, Triac, DMX, Bluetooth |
| | Input Voltage | 24VDC |
| | Max Input Current | 4.12A (White) |
| | Connections | 18AWG, Copper Conductors |
| | Power Cable Length | Standard 10ft (3m). Also available in 16ft (5m) and 32ft (10m) |
| Mechanical | Circuit | Class 2 |
| | Housing Construction | Injection Moulded White Silicone |
| | Minimum Bend Radius | 5.9" (150mm) |
| | Operating Temperature | -40°F to 113°F (-40°C to 45°C) |
| Environmental | Ingress Protection | IP68 |
| | Impact Protection | IK10 |
| | Vibration Rating | 3G |
| | Resistance | UV, Flame, Solvents and Saltwater Resistant |
| | Certifications | cULus, CE, RoHS Compliant |

Performance

| CCT/Color | | 2200K | 2700K | 3000K | 3500K | 4000K | 5700K |
|-------------|--------------|------------------|------------|------------|------------|------------|------------|
| Power | W/FT (W/m) | 5.03 (16.5) | | | | | |
| Lumens | lm/FT (lm/m) | 366 (1200) | 396 (1300) | 396 (1300) | 427 (1400) | 427 (1400) | 396 (1300) |
| Efficacy | lm/W | 73 | 79 | 79 | 85 | 85 | 79 |
| CRI | CRI | 80 | | | | | |
| Increment | inch (mm) | 1.97 (50) | | | | | |
| Max. Length | ft (m) | 17ft 6in (5.33m) | | | | | |

Ordering

| Product Code | CCT | Lead Orientation | | Mounting Accessories | |
|----------------------------|-------|------------------|-------------------|----------------------|-----------------------------|
| BL neonVIEW BR SL SI L4 VB | | | | | |
| | 2200K | NVS BRSL BC 68 | = Back Lead | NVBRSL VB CPS | = Mounting Clip |
| | 2700K | NVS BRSL EC 68 | = End Lead | NVBRSL VB CHS | = Mounting Channel |
| | 3000K | NVS BRSL RC 68 | = Right Side Lead | NVBRSL VB RCPS | = Recessed Mounting Clip |
| | 3500K | NVS BRSL LC 68 | = Left Side Lead | NVBRSL VB RCHS | = Recessed Mounting Channel |
| | 4000K | | | | |
| | 5700K | | | | |

BL LIGHTING ILLUMINATE EVERYTHING

111 - 8838 Heather St. Vancouver, BC, Canada. V6P 3S8
P: 1-604-874-4405 E: info@bllighting.com
Copyright © BL INNOVATIVE LIGHTING. All Rights Reserved.

Solid State Lighting is sensitive to power fluctuations. Surge protection is highly recommended for all LED lighting products and should be on a dedicated circuit to protect against premature failure. Lack of surge protection may void your warranty.

Designed & Assembled in North America.

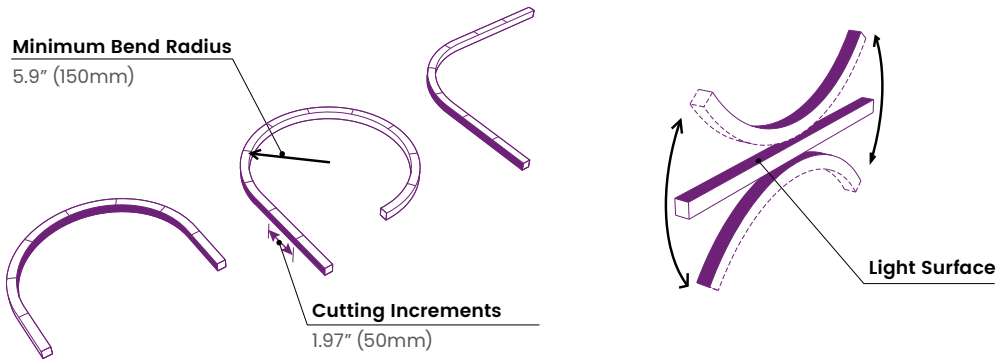
Specifications subject to change without notice. Please refer to our website at bllighting.com for current technical data.

For more information,
please download the
BL LIGHTING catalog

bllighting.com

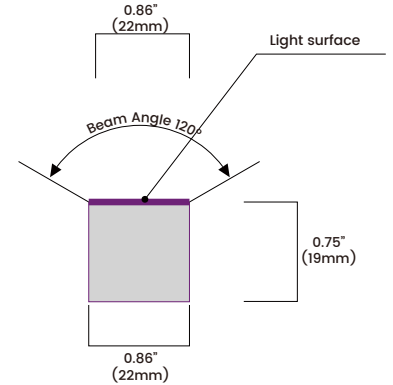


Minimum Bend Radius and Bend Orientation



BL neonVIEW Bright SIDE Series bends vertically
Horizontal bend option also available (HB Version)

Beam Angle & Viewing Angle

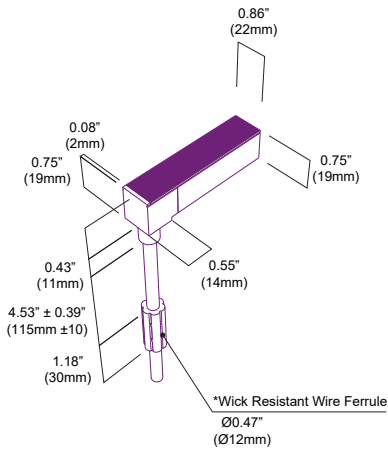


Average Beam Angle (50%): 111.2°

Dimensions & Lead Orientations

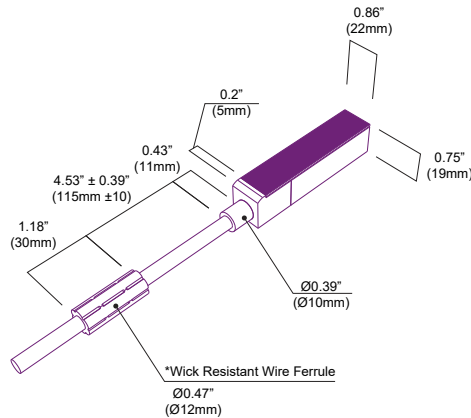
Back Lead

NVS BRSL BC 68

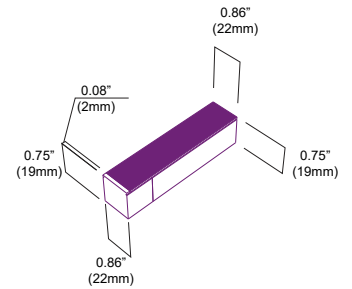


End Lead

NVS BRSL EC 68

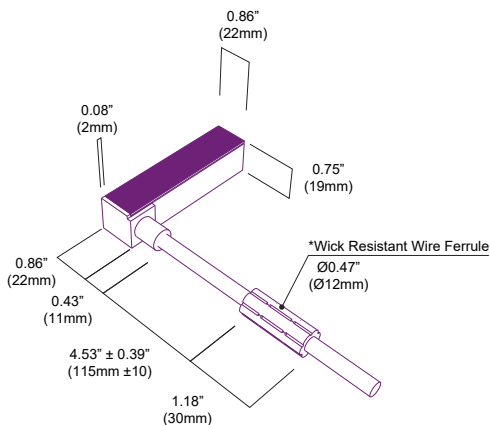


End Cap



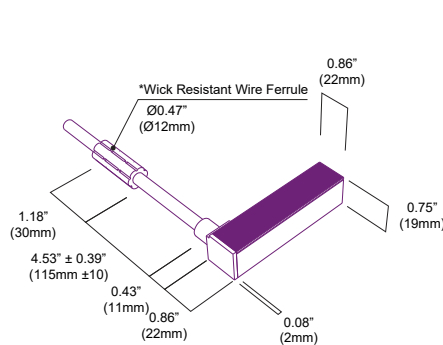
Right Side Lead

NVS BRSL RC 68



Left Side Lead

NVS BRSL LC 68



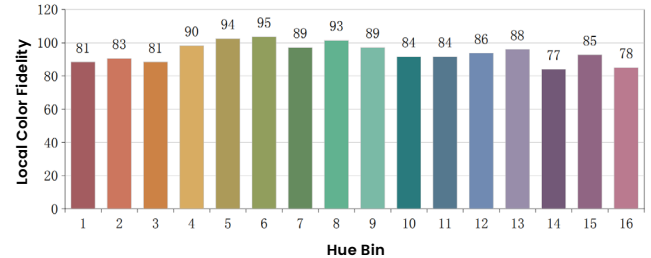
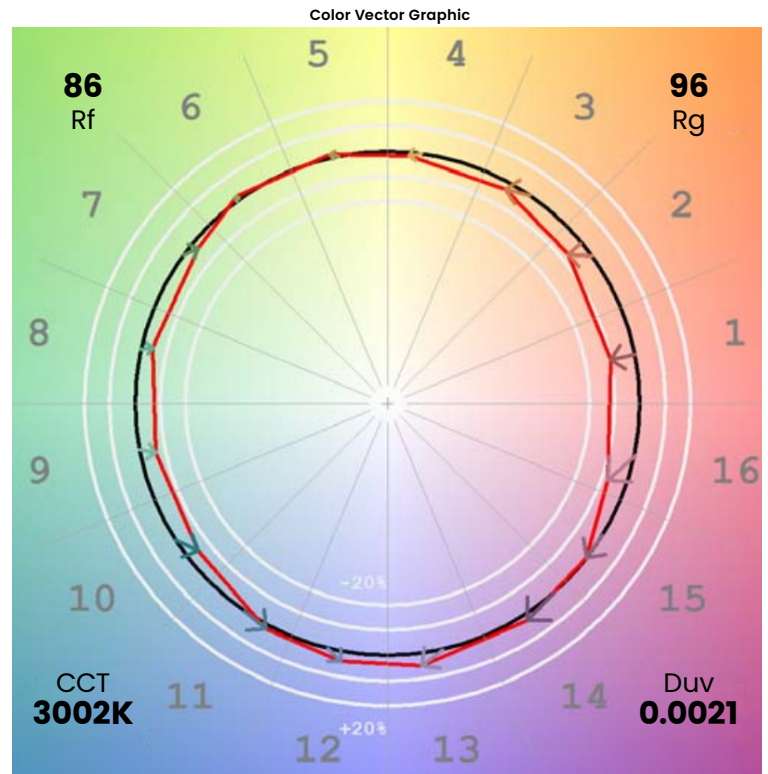
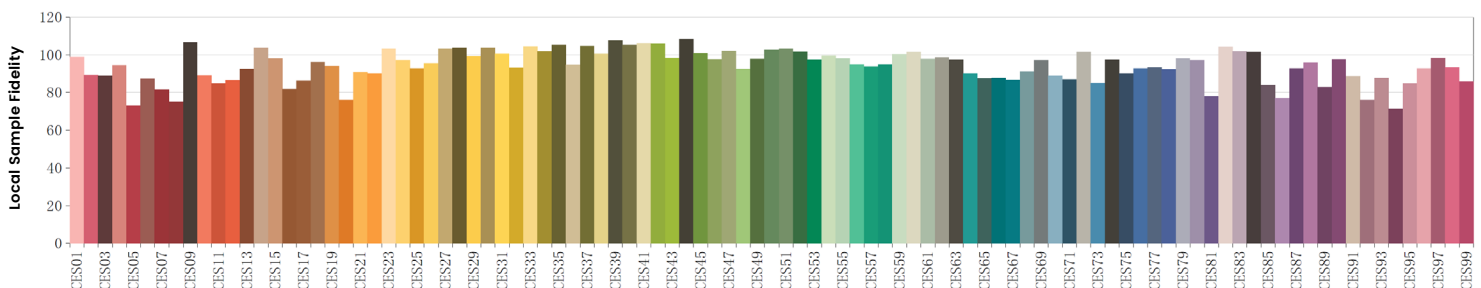
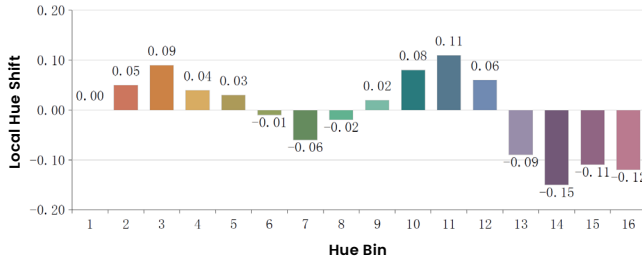
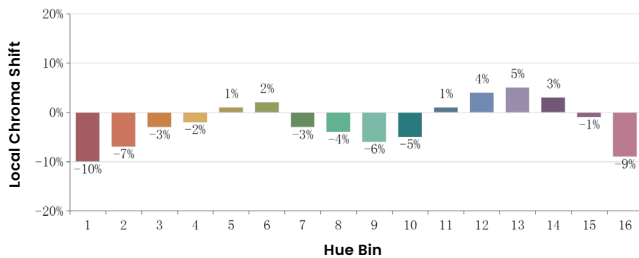
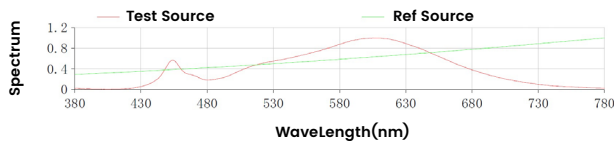
*The Wick Resistant Wire Ferrule is built into the lead wire, 4.5" (115mm) from the BL neonVIEW Termination Connection, for additional moisture ingress protection. Removal of the Wick Resistant Wire Ferrule may void your warranty.



Colorimetric Details

| CCT | CRI | Rf | Rg |
|-------|-----|----|----|
| 3000K | 85 | 86 | 96 |

Rf: 86
Rg: 96
CCT: 3002K
Duv: 0.0021
u': 0.2498
v': 0.5242



*All results in accordance with ANSI C78.377 standard

BL LIGHTING ILLUMINATE EVERYTHING

111 - 8838 Heather St. Vancouver, BC, Canada. V6P 3S8
P: 1-604-874-4405 E: info@blighting.com
Copyright © BL INNOVATIVE LIGHTING. All Rights Reserved.

Solid State Lighting is sensitive to power fluctuations. Surge protection is highly recommended for all LED lighting products and should be on a dedicated circuit to protect against premature failure. Lack of surge protection may void your warranty.

Designed & Assembled in North America.

Specifications subject to change without notice. Please refer to our website at blighting.com for current technical data.

For more information,
please download the
BL LIGHTING catalog

blighting.com

