

# BL neonVIEW BRIGHT SIDE SI SC L3 HB

Diffused, Flexible, Linear LED Lighting,  
24VDC, Constant Voltage, Horizontal Bend,  
Bright Side Profile, Silicone, Single Color

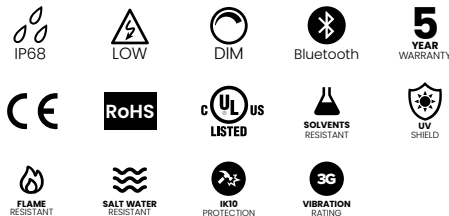


BL neonVIEW BRIGHT SIDE SI SC L3 HB with a wider profile lens delivers over 229 lm/ft of dot-free illumination. The flexible, square shaped Silicone encapsulated diffuser bends horizontally alongside the light surface, and shines a vivid line of light with a uniform 120° beam distribution. Rated for a range of operating temperatures from -40° F to 131° F (-40° C to 55° C), and built with seamless IP68 wet location rated injection molded terminations for excellent weatherability in even in the most extreme environmental conditions. Ideal for building outlines, facades, signage and exterior architectural accents.

**Dot-free** **Seamless connections** **-40°F to 131°F (-40°C to 55°C)**

<b>CLIENT</b>	
<b>PROJECT NAME</b>	
<b>LOCATION</b>	
<b>DATE</b>	

## Product Detail



<b>Lighting</b>	Lamp	LED, SMD 2835
	LED's Per Foot	43 LEDs/ft (140 LEDs/m)
	Beam Angle	120°
	Average Life	50,000 Hours
<b>Electrical</b>	Controls	0-10V, MLV, ELV, Phase-Cut, Triac, DMX, Bluetooth
	Input Voltage	24VDC
	Max Input Current	4.12A (White)
	Connections	18AWG, Copper Conductors
	Power Cable Length	Standard 10ft (3m). Also available in 16ft (5m) and 32ft (10m)
<b>Mechanical</b>	Circuit	Class 2
	Housing Construction	Injection Moulded White Silicone
	Minimum Bend Radius	5.9" (150mm)
<b>Environmental</b>	Operating Temperature	-40°F to 131°F (-40°C to 55°C)
	Ingress Protection	IP68
	Impact Protection	IK10
	Vibration Rating	3G
	Resistance	UV, Flame, Solvents and Saltwater Resistant
	Certifications	cULus, CE, RoHS Compliant

## Performance

CCT/Color		2200K	2700K	3000K	3500K	4000K	5700K
<b>Power</b>	W/FT (W/m)	3.66 (12)					
<b>Lumens</b>	lm/FT (lm/m)	213 (700)	220 (720)	220 (720)	229 (750)	229 (750)	229 (750)
<b>Efficacy</b>	lm/W	58	60	60	63	63	63
<b>CRI</b>	CRI	80					
<b>Increment</b>	inch (mm)	1.97 (50)					
<b>Max. Length</b>	ft (m)	24ft 6in (7.5m)					

## Ordering

Product Code	CCT	Lead Orientation		Mounting Accessories	
BL neonVIEW BR SL SI L3 HB					
	2200K	NVS BRSL BC 68	= Back Lead	NVBRSL HB CPS	= Mounting Clip
	2700K	NVS BRSL EC 68	= End Lead	NVBRSL HB CHS	= Mounting Channel
	3000K	NVS BRSL RC 68	= Right Side Lead	NVBRSL HB RCPS	= Recessed Mounting Clip
	3500K	NVS BRSL LC 68	= Left Side Lead	NVBRSL HB RCHS	= Recessed Mounting Channel
	4000K				
	5700K				

## BL LIGHTING ILLUMINATE EVERYTHING

111 - 8838 Heather St. Vancouver, BC, Canada. V6P 3S8  
P: 1-804-874-4405 E: info@blighting.com  
Copyright © BL INNOVATIVE LIGHTING. All Rights Reserved.

Solid State Lighting is sensitive to power fluctuations. Surge protection is highly recommended for all LED lighting products and should be on a dedicated circuit to protect against premature failure. Lack of surge protection may void your warranty.

Designed & Assembled in North America.

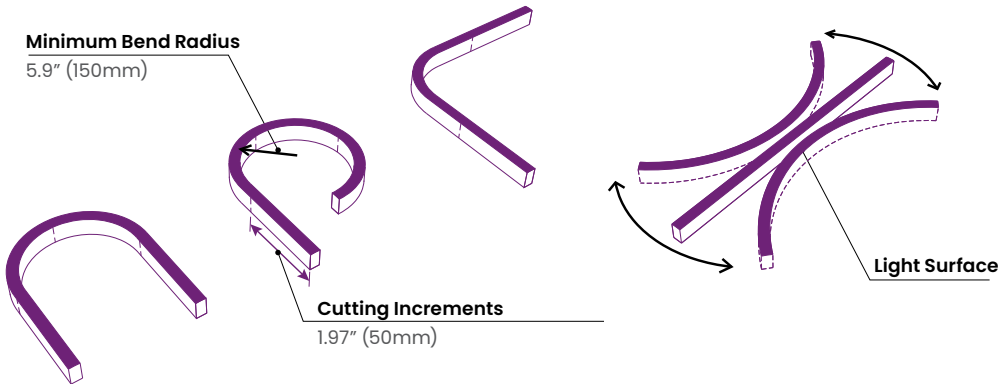
Specifications subject to change without notice. Please refer to our website at blighting.com for current technical data.

For more information,  
please download the  
BL LIGHTING catalog

blighting.com

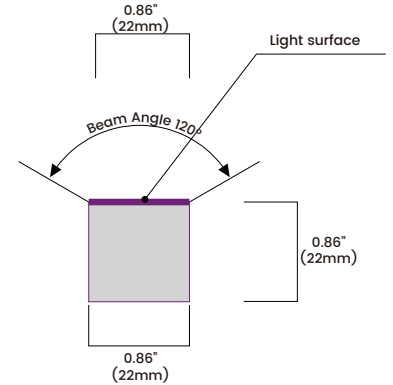


## Minimum Bend Radius and Bend Orientation



**BL neonVIEW Bright SIDE HB Series bends horizontally**  
Vertical bend option also available

## Beam Angle & Viewing Angle

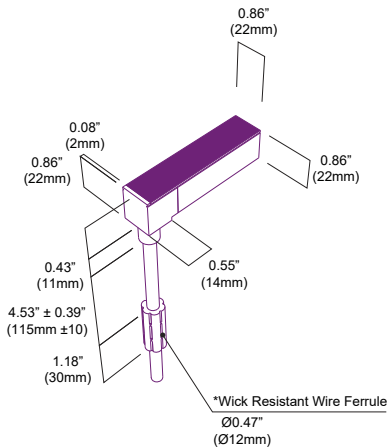


Average Beam Angle (50%): 113.6°

## Dimensions & Lead Orientations

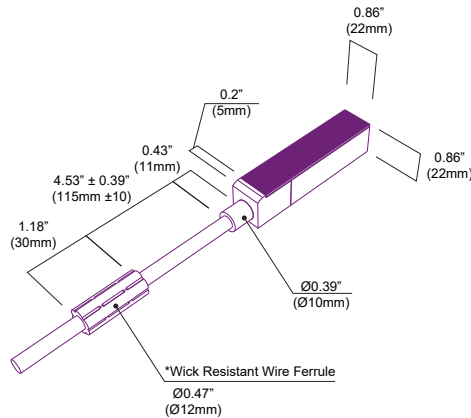
### Back Lead

#### NVS BRSL BC 68

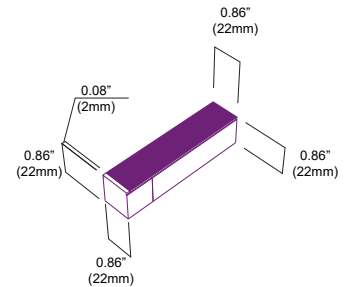


### End Lead

#### NVS BRSL EC 68

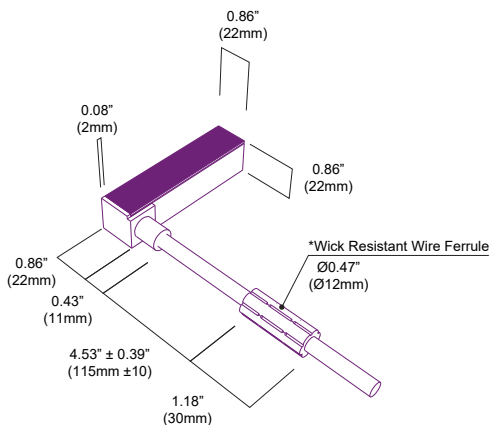


### End Cap



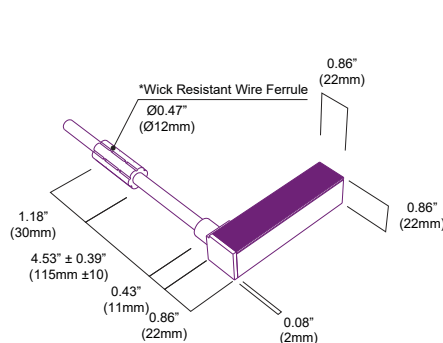
### Right Side Lead

#### NVS BRSL RC 68



### Left Side Lead

#### NVS BRSL LC 68



\*The Wick Resistant Wire Ferrule is built into the lead wire, 4.5" (115mm) from the BL neonVIEW Termination Connection, for additional moisture ingress protection. Removal of the Wick Resistant Wire Ferrule may void your warranty.



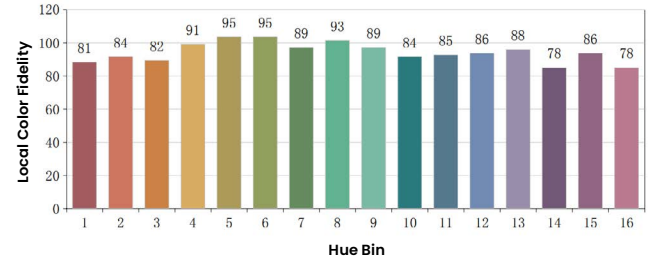
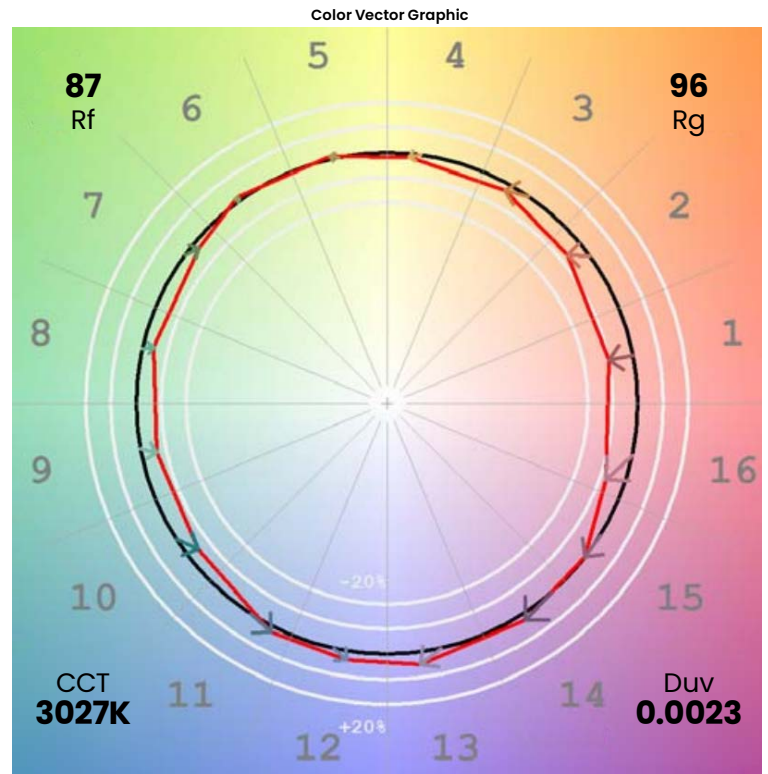
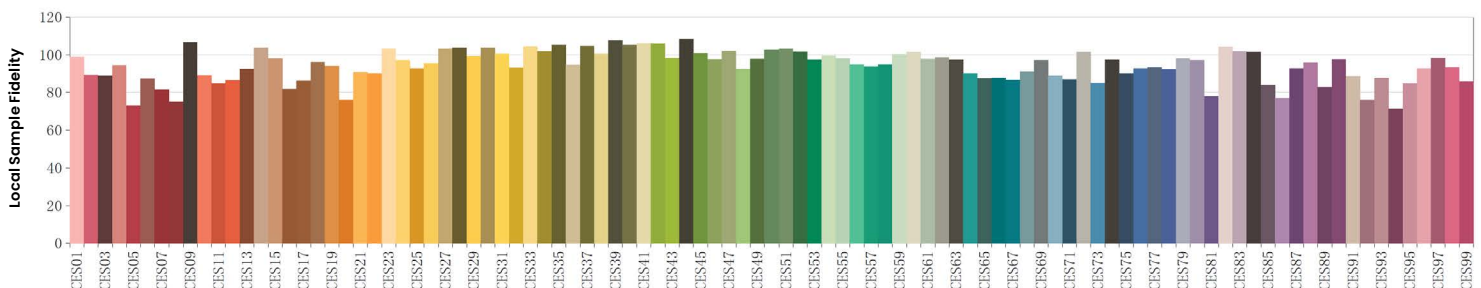
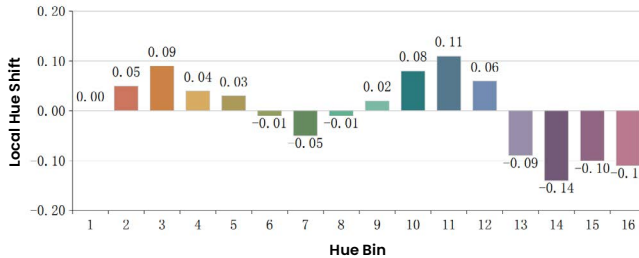
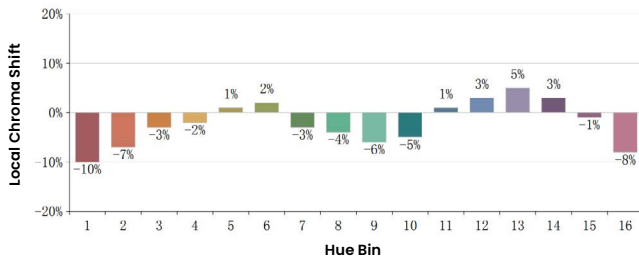
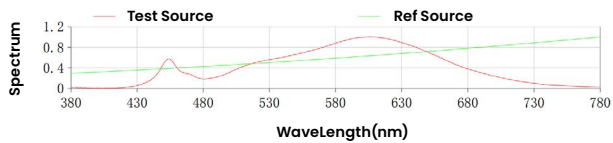
## Colorimetric Details

CCT	CRI	Rf	Rg
3000K	85	87	96

Rf: 87  
Rg: 96

CCT: 3027K  
Duv: 0.0023

u': 0.2488  
v': 0.5240



\*All results in accordance with ANSI C78.377 standard

**BL LIGHTING**  
 ILLUMINATE EVERYTHING

111 - 8838 Heather St. Vancouver, BC, Canada. V6P 3S8  
 P: 1-604-874-4405 E: info@bllighting.com  
 Copyright © BL INNOVATIVE LIGHTING. All Rights Reserved.

Solid State Lighting is sensitive to power fluctuations. Surge protection is highly recommended for all LED lighting products and should be on a dedicated circuit to protect against premature failure. Lack of surge protection may void your warranty.

Designed & Assembled in North America.

Specifications subject to change without notice. Please refer to our website at bllighting.com for current technical data.

For more information,  
 please download the  
 BL LIGHTING catalog

bllighting.com

