

# BL inGROUND DISK S55

Square, Outdoor Recessed Luminaire  
3W, 24VDC Constant Voltage



BL inGROUND DISK S55 ground recessed uplights are built to blend seamlessly into the landscape, and ideal for vertical highlighting of features such as columns, porticoes, garden walls, and tree silhouettes. Available in a variety of beam angles ranging from 9° to 60°, in 2000K, 3000K and 6000K options. The unit is durably constructed with a die-cast aluminum body, a 316 stainless steel trim and a tempered glass lens while the mounting boot allows uniform and fast installations. Low profile and efficient, these well lights are rated IP67, and are treadable, with up to 3700lb weight bearing capacity, perfect for installation in pavers, on decks, patios and along paths and walkways.

<b>CLIENT</b>	
<b>PROJECT NAME</b>	
<b>LOCATION</b>	
<b>DATE</b>	

Up to 183lm/unit 24VDC

## Product Detail



	<b>Power</b>	3W
<b>Lighting</b>	<b>Beam Angle</b>	9°, 15°, 20°, 30°, 45° and 60°
	<b>Average Life</b>	50,000 Hours
	<b>Controls</b>	Dali, PWM, Triac, 1-10V
<b>Electrical</b>	<b>Input Voltage</b>	24VDC
	<b>Circuit</b>	Class 2
	<b>Operating Current (MA)</b>	105
	<b>Housing Construction</b>	Grey Powder Coated Aluminum
<b>Mechanical</b>	<b>Front Cover</b>	Hard Chrome-Plated 316 Stainless Steel
	<b>Light Window</b>	9/32" (7mm) Tempered Frosted Glass
	<b>Glass Pressure Capacity</b>	Distributed Weight = 3700lbs (1700kgs)
	<b>Mounting Sleeve</b>	ABS
	<b>Power Cable</b>	2-Core 18AWG, Length = 1.6FT (0.5m)
	<b>Ingress Protection</b>	IP67
<b>Environmental</b>	<b>Certifications</b>	ETL, CE, RoHS Compliant
	<b>Impact Protection</b>	IK08
	<b>Operating Temperature</b>	-4°F to 104°F (-20°C to 40°C)

## Performance

Power	W/unit	3		
CCT	CCT	2000K	3000K	6000K
<b>Lumens</b>	lm/unit	125	143	183
<b>Efficacy</b>	lm/W	42	48	61
<b>CRI</b>	CRI	70	80	70

## Ordering

Product Code	CCT	Beam Angle	Louver (Optional)
BL inGROUND DISK S55			
	2000K	9D (9°)	HC55-LV
	3000K	15D (15°)	NO
	6000K	20D (20°)	
		30D (30°)	
		45D (45°)	
		60D (60°)	

### BL LIGHTING ILLUMINATE EVERYTHING

111 - 8838 Heather St. Vancouver, BC, Canada. V6P 3S8  
P: 1-604-874-4405 E: info@bllighting.com  
Copyright © BL INNOVATIVE LIGHTING. All Rights Reserved.

Solid State Lighting is sensitive to power fluctuations. Surge protection is highly recommended for all LED lighting products and should be on a dedicated circuit to protect against premature failure. Lack of surge protection may void your warranty.

Designed & Assembled in North America.

Specifications subject to change without notice. Please refer to our website at bllighting.com for current technical data.

For more information, please download the BL LIGHTING catalog



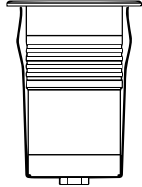
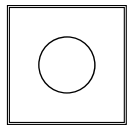
bllighting.com

## Dimensions

## Optional Louver

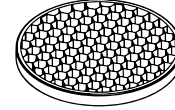
### DISK S55

Ø 2.16" (55mm)



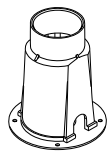
3.27"  
(83mm)

Part#: HC55-LV



### Recessed Mounting Sleeve

Ø 1.93" (49mm)

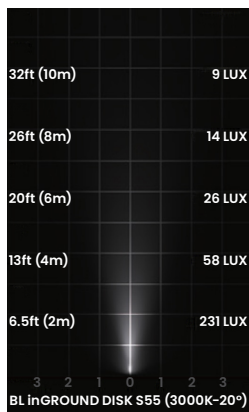


5.24"  
(133mm)

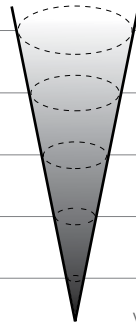
Ø 3.70" (94mm)

## Photometric Details

### Illuminance



Distance	Center Beam LUX	Vertical Beam Width	Horizontal Beam Width
32ft (10m)	9	6.9ft (2.1m)	6.6ft (2.0m)
26ft (8m)	14	5.6ft (1.7m)	5.2ft (1.6m)
20ft (6m)	26	4.2ft (1.3m)	3.9ft (1.2m)
13ft (4m)	58	2.6ft (0.8m)	2.6ft (0.8m)
6.5ft (2m)	231	1.3ft (0.4m)	1.3ft (0.4m)



Vertical Spread: 20.1°  
Horizontal Spread: 20.6°

### Light Distribution

