

BL inGROUND DISK R250

Circular, Outdoor Recessed Luminaire
25W, 24VDC Constant Voltage



BL inGROUND DISK R250 ground recessed uplights are built to blend seamlessly into the landscape, and ideal for vertical highlighting of features such as columns, porticoes, garden walls, and tree silhouettes. Available with your choice of 12°, 25° or 38° beam angles, in 3000K and 6000K options. The unit is durably constructed with a die-cast aluminum body, a 316L stainless steel trim and a tempered glass lens while the mounting boot allows uniform and fast installations. Low profile and efficient, these well lights are rated IP67, and are treadable, with up to 11000lb weight bearing capacity, perfect for installation in pavers, on decks, patios and along paths and walkways.

CLIENT	
PROJECT NAME	
LOCATION	
DATE	

Up to 2369lm/unit 24VDC

Product Detail



Lighting	Power	25W
	Beam Angle	12°, 25° and 38° Options
	Average Life	50,000 Hours
Electrical	Controls	Dali, PWM, Triac, 1-10V
	Input Voltage	24VDC
	Circuit	Class 2
Mechanical	Operating Current (MA)	1040
	Housing Construction	Dark Grey Powder Coated Aluminum
	Front Cover	Hard Chrome-Plated 316L Stainless Steel
Environmental	Light Window	3/8" (10mm) Tempered Frosted Glass
	Glass Pressure Capacity	Distributed Weight = 11000lbs (5000kgs)
	Mounting Sleeve	5VA Plastic
	Cable Gland	PG13.5 IP68
	Power Cable	2-Core 18AWG, Length = 1.6FT (0.5m)
	Ingress Protection	IP67
	Certifications	ETL, CE, RoHS Compliant
Impact Protection	IK10	
Operating Temperature	-4°F to 104°F (-20°C to 40°C)	

Performance

Power	W/unit	25	
CCT	CCT	3000K	6000K
Lumens	lm/unit	1849	2369
Efficacy	lm/W	74	95
CRI	CRI	80	70

Ordering

Product Code	CCT	Beam Angle	Louver (Optional)
BL inGROUND DISK R250	3000K	12D (12°)	HC250-LV
	6000K	25D (25°)	NO
		38D (38°)	

BL LIGHTING ILLUMINATE EVERYTHING

111 - 8838 Heather St. Vancouver, BC, Canada. V6P 3S8
P: 1-604-874-4405 E: info@bllighting.com
Copyright © BL INNOVATIVE LIGHTING. All Rights Reserved.

Solid State Lighting is sensitive to power fluctuations. Surge protection is highly recommended for all LED lighting products and should be on a dedicated circuit to protect against premature failure. Lack of surge protection may void your warranty.

Designed & Assembled in North America.

Specifications subject to change without notice. Please refer to our website at bllighting.com for current technical data.

For more information, please download the BL LIGHTING catalog

bllighting.com

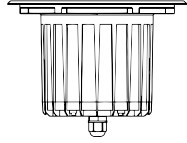
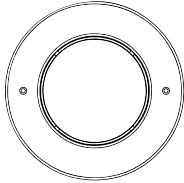


Dimensions

Optional Louver

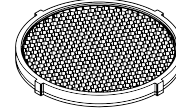
DISK R250

Ø 9.84" (250mm)



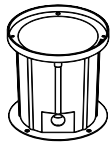
7.48"
(190mm)

Part#: HC250-LV

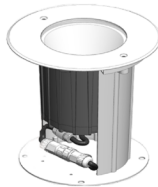


Recessed Mounting Sleeve

Ø 8.74" (222mm)

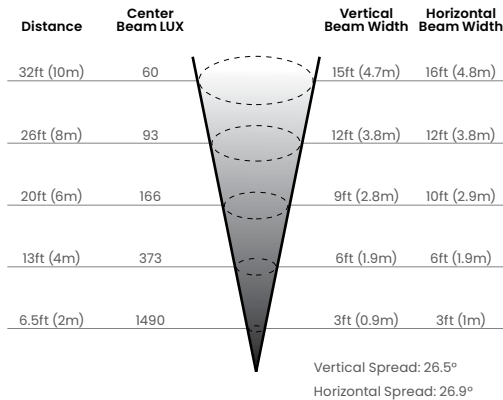
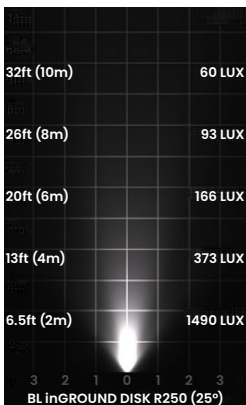


8.66"
(220mm)



Photometric Details

Illuminance



Light Distribution

