

BL inGROUND DISK R150

Circular, Outdoor Recessed Luminaire
6W, 24VDC Constant Voltage



BL inGROUND DISK R150 ground recessed uplights are built to blend seamlessly into the landscape, the fully adjustable directional beam head makes it an ideal choice for vertical highlighting of features such as columns, porticoes, garden walls, and tree silhouettes. Available in 6 different beam angles, in 2000K, 3000K and 6000K options. The unit is durably constructed with a die-cast aluminum body, a 316L stainless steel trim and a tempered glass lens while the mounting boot allows uniform and fast installations. Low profile and efficient, these well lights are rated IP67, and are treadable, with up to 1700lb weight bearing capacity, perfect for installation in pavers, on decks, patios and along paths and walkways.

CLIENT	
PROJECT NAME	
LOCATION	
DATE	

Up to 479lm/unit 24VDC

Product Detail



Lighting	Power	6W
	Beam Angle	9°, 15°, 20°, 30°, 45° and 60° Options
	Average Life	50,000 Hours
Electrical	Controls	Dali, PWM, Triac, 1-10V
	Input Voltage	24VDC
	Circuit	Class 2
Mechanical	Operating Current (MA)	216
	Housing Construction	Dark Grey Powder Coated Aluminum
	Front Cover	Hard Chrome-Plated 316L Stainless Steel
	Light Window	5/16" (8mm) Tempered Frosted Glass
	Glass Pressure Capacity	Distributed Weight = 1700lbs (780kgs)
	Mounting Sleeve	ABS
	Cable Gland	PG9 IP68
Environmental	Power Cable	2-Core 18AWG, Length = 1.6FT (0.5m)
	Ingress Protection	IP67
	Certifications	ETL, CE, RoHS Compliant
	Impact Protection	IK09
	Operating Temperature	-4°F to 104°F (-20°C to 40°C)

Performance

Power	W/unit	6		
CCT	CCT	2000K	3000K	6000K
Lumens	lm/unit	360	376	479
Efficacy	lm/W	60	63	80
CRI	CRI	70	80	70

Ordering

Product Code	CCT	Beam Angle	Louver (Optional)
BL inGROUND DISK R150			
	2000K	9D (9°)	HC150-LV
	3000K	15D (15°)	NO
	6000K	20D (20°)	
		30D (30°)	
		45D (45°)	
	60D (60°)		

BL LIGHTING ILLUMINATE EVERYTHING

111 - 8838 Heather St. Vancouver, BC, Canada. V6P 3S8
P: 1-604-874-4405 E: info@bllighting.com
Copyright © BL INNOVATIVE LIGHTING. All Rights Reserved.

Solid State Lighting is sensitive to power fluctuations. Surge protection is highly recommended for all LED lighting products and should be on a dedicated circuit to protect against premature failure. Lack of surge protection may void your warranty.

Designed & Assembled in North America.

Specifications subject to change without notice. Please refer to our website at bllighting.com for current technical data.

For more information, please download the BL LIGHTING catalog

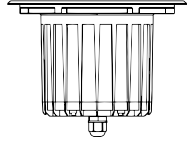
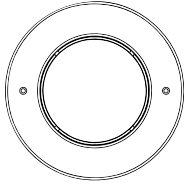
bllighting.com



Dimensions

DISK R150

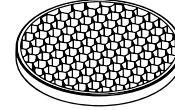
Ø 5.90" (150mm)



4.72"
(120mm)

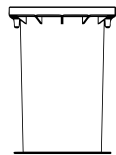
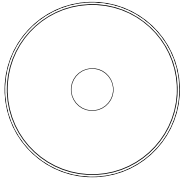
Optional Louver

Part#: HC150-LV



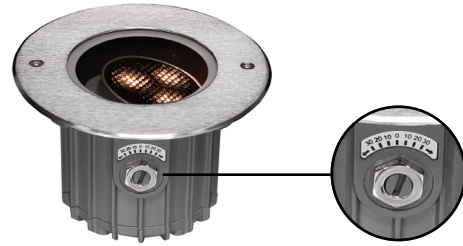
Recessed Mounting Sleeve

Ø 5.60" (142mm)



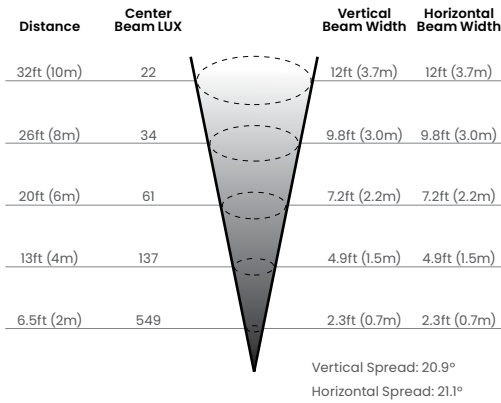
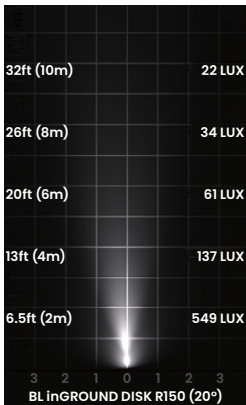
7.76"
(197mm)

Adjustable Beam Direction



Photometric Details

Illuminance



Light Distribution

