

BL flexFORM U Series

Flexible, Linear LED Strip Lighting
Monochromatic, 24VDC, Constant Voltage

INSTALLATION INSTRUCTIONS



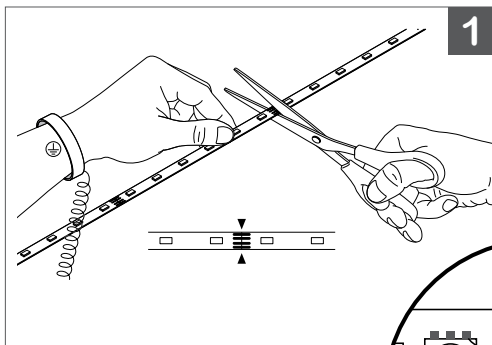
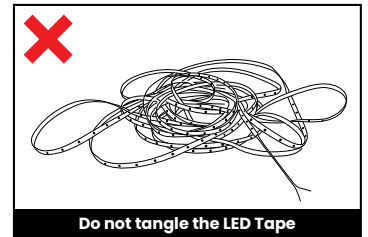
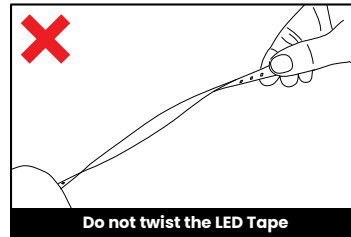
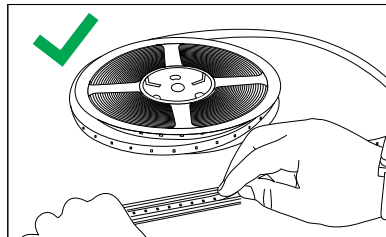
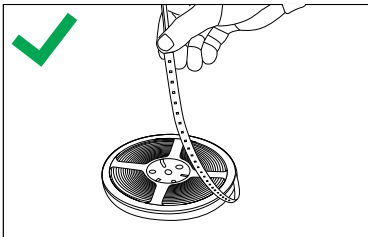
Please note that these instructions are guidelines only and in no way supersede any construction or installation standards. Local building and electrical codes should be consulted before installation.

ATTENTION

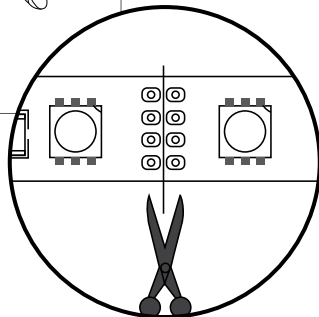
- There is potential danger of electrical shock when operating electrical components.
- Make sure power is turned off before installation.
- Allow for heat dissipation and adequate ventilation.

- Never power the LED Tape on when coiled on a reel.
- Do not stare directly into the LED lights when illuminated.
- Do not connect more than 16'-4" (5M) in a single length.
- Secure and route wires to avoid being pinched or damaged.
- Never connect LED Tape directly to a 120V AC power source.
- Do not install indoor IP20 rated LED Tapes in areas that are exposed to the elements.
- Suitable for dry location only.
- Keep out of reach of children.

BL flexFORM U Series can be bent freely in all directions, horizontally and vertically, to a maximum of 90° at the designated bending points.



1. A. When cutting the LED Tape, it is recommended to wear an electrostatic ring. Measure to required length.
B. Using sharp scissors, cut directly in the centre of the designated markings.



NOTE: Do not cut on the hard solder points. Cutting anywhere else will result in damage to the LED tape and will void warranty.

BL LIGHTING ILLUMINATE EVERYTHING

111 - 8838 Heather St. Vancouver, BC, Canada. V6P 3S8
P: 1-804-874-4405 E: info@bllighting.com
Copyright © BL INNOVATIVE LIGHTING. All Rights Reserved.

Solid State Lighting is sensitive to power fluctuations. Surge protection is highly recommended for all LED lighting products and should be on a dedicated circuit to protect against premature failure. Lack of surge protection may void your warranty.

Designed & Assembled in North America.

Specifications subject to change without notice. Please refer to our website at bllighting.com for current technical data.

For more information, please download the BL LIGHTING catalog

bllighting.com



BL flexFORM U Series

Flexible, Linear LED Strip Lighting
Monochromatic, 24VDC, Constant Voltage

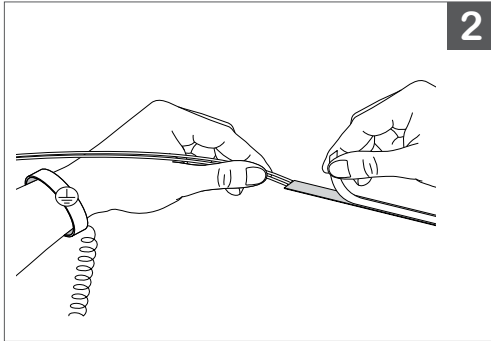
INSTALLATION INSTRUCTIONS



Please note that these instructions are guidelines only and in no way supersede any construction or installation standards. Local building and electrical codes should be consulted before installation.

ATTENTION

- There is potential danger of electrical shock when operating electrical components.
- Make sure power is turned off before installation.
- Allow for heat dissipation and adequate ventilation.

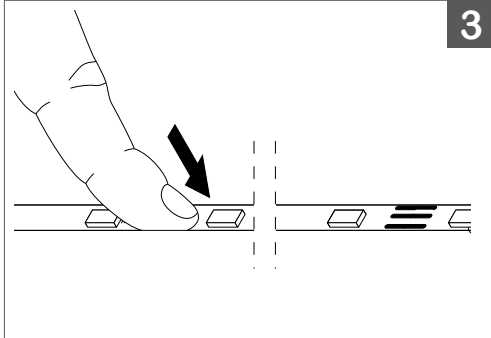


2

2.

A. Ensure mounting surface is clean and dry prior to installing the LED Tape. The LED Tape comes with a 3M adhesive backing which can be gently pressed onto the mounting surface or into aluminum channel after removing the protective film.

B. Dry fit the LED Tape to the desired location prior to removing the adhesive backing. When installing into aluminum channel, centre the LEDs starting 1/8" (3mm) away from the end.



3

3.

A. Hold LED Tape taught to clean, dry mounting surface.

B. Press firmly along the length of the LED Tape. Do not exert excessive pressure, or apply a roller on the LEDs and resistors, as this may damage the LED.

BL LIGHTING ILLUMINATE EVERYTHING

111 - 8838 Heather St. Vancouver, BC, Canada. V6P 3S8
P: 1-804-874-4405 E: info@bllighting.com
Copyright © BL INNOVATIVE LIGHTING. All Rights Reserved.

Solid State Lighting is sensitive to power fluctuations. Surge protection is highly recommended for all LED lighting products and should be on a dedicated circuit to protect against premature failure. Lack of surge protection may void your warranty.

Designed & Assembled in North America.

Specifications subject to change without notice. Please refer to our website at bllighting.com for current technical data.

For more information, please download the BL LIGHTING catalog

bllighting.com

