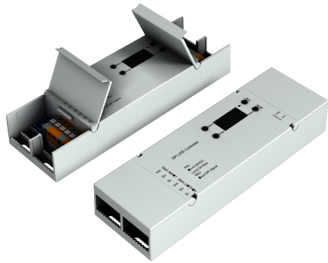


BL controls DECODER SPI converts DMX signal to Serial Peripheral Interface (SPI), enabling high speed data transmission and strong signal integrity. Easy to configure via an OLED panel, works with common pixel protocols.

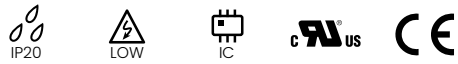
**Quick Ship**

<b>CLIENT</b>	
<b>PROJECT NAME</b>	
<b>LOCATION</b>	
<b>DATE</b>	

## Product Detail



<b>Electrical</b>	Input Voltage	5 - 24VDC
	Max Input	0.2A
	Input Signal	DMX
	Output Signal	SPI
	DMX Channels	512
<b>Mechanical</b>	Connection Type	Spring wire connector
	Housing Construction	Plastic, White
	Weight	0.28lb (126g)
	Panel	OLED
<b>Environmental</b>	Ingress Protection	IP20
	Certifications	UR, CE, RoHS
	Operating Temperature	-4°F to 122°F (-20°C to 50°C)



**RoHS**

## Ordering

Product Code
BL-controls-DECODER-SPI

## Dimensions

