

PROJECT SPOTLIGHT

V24233

INTERIOR

Illuminate sophisticated spaces to reflect their unique voices, styles and environments.

EXTERIOR

Enhance architectural spirit and adorn landscapes with symbolic, memorable lighting.

CUSTOM

Efficient lighting solutions transform innovative ideas into reality.



We turn vision into reality, illuminating everything with endless possibilities.

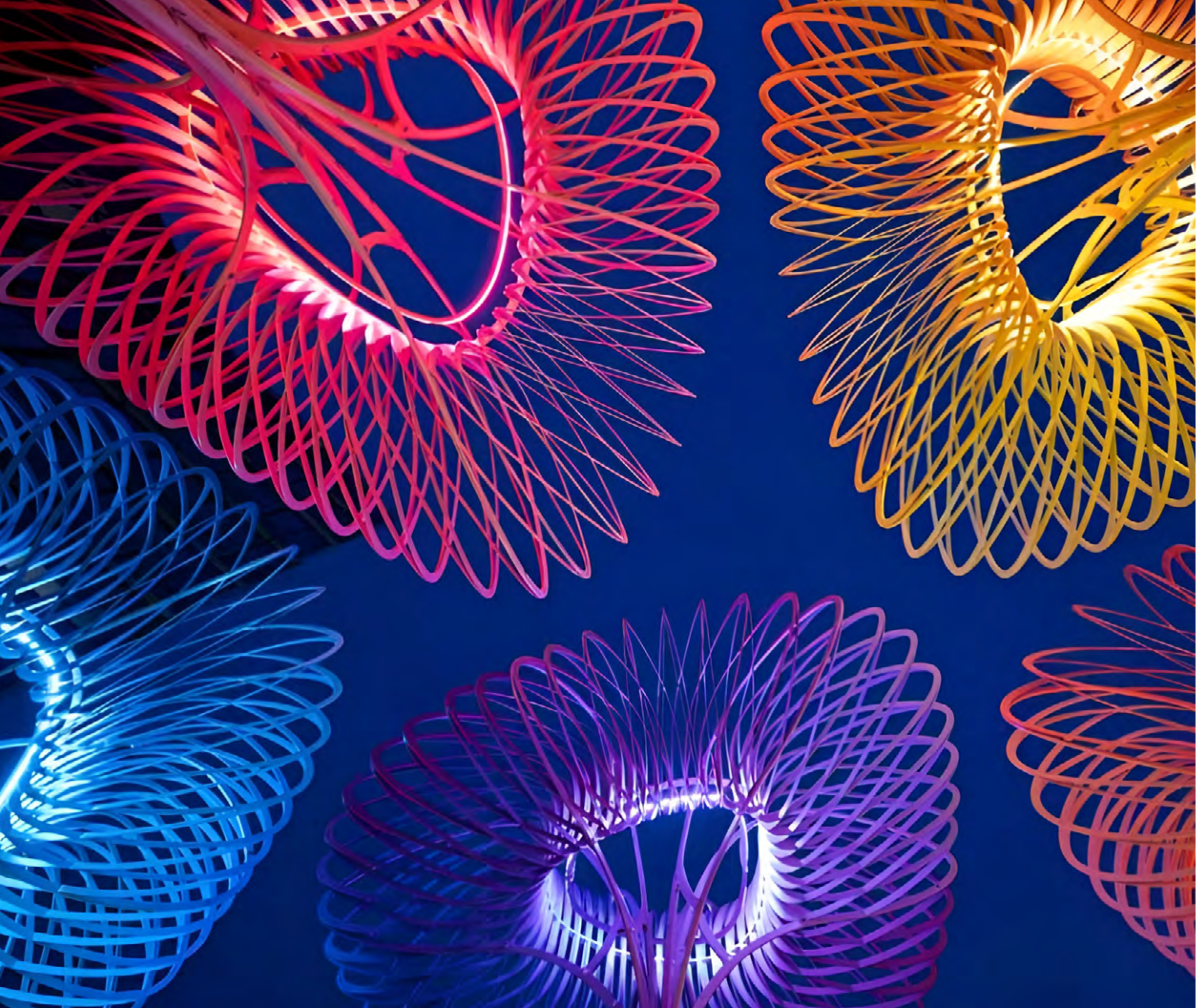


LIGHTING
SINCE 1986

Providing innovative lighting solutions since 1986, BL Lighting manufactures specification-grade architectural lighting with a focus on dynamic, high performance, and sustainable, fiber optic, linear lighting, LED systems, and controls.

We provide complete support, and specialize in custom, tailor-made orders for architectural, hospitality, design-build, display, commercial and residential interiors or exteriors, and unique applications such as under-water, marine, extreme temperature, explosion proof, and more.

Our commitment is to explore and develop the latest of lighting technologies, to provide custom solutions, and ignite creativity in our clientele for all of their lighting endeavors.



CONTENTS

LED NEON	1
LED TAPE & PROFILES	29
OPTICAL FIBER	55
LUMINAIRES	63
CATENARY	73
POWER & CONTROLS	77
OUR SERVICES	79

*Cover Project: UBC Student Union Building
Location: Vancouver, BC, Canada
Product: BL Flexform D2 3000K & 6500K*

*Contents Page Project: Software Company
Location: San Jose, CA, USA
Product: BL Neonview Side V Pixel ID*



LED NEON

BL Neonview Series

The BL Neonview family is a revolutionary lighting solution offering limitless color options and unparalleled flexibility. Designed to replace traditional neon, BL Neonview excels in extreme conditions—whether exposed to harsh weather, extreme heat, cold, or moisture. Available in multiple dimensions and shapes, this specification-grade, high-performance, linear LED lighting system is energy efficient and highly customizable, delivering bright, vivid illumination in seamless, long run lengths, free of shadows and dark spots. Integrating effortlessly into architecture or design, BL Neonview is perfect for enhancing building facades, signage, saunas, and wet locations, providing stunning, durable lighting in the toughest environments.

CCT Range : 2200 K - 5700 K
 Lumens: 34 lm/FT - 549 lm/FT
 Power: 0.76 W/FT - 6.70 W/FT

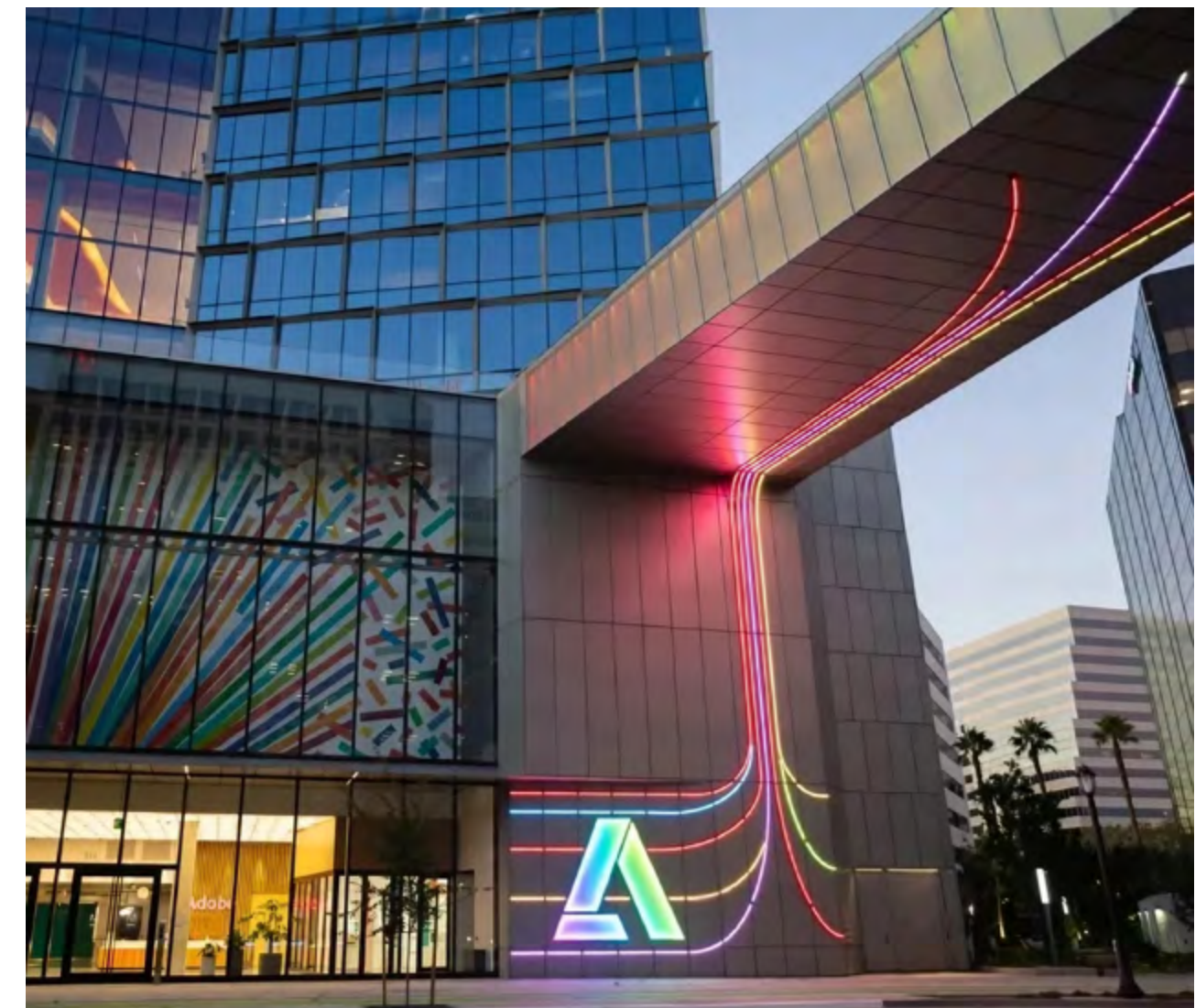


Product Family

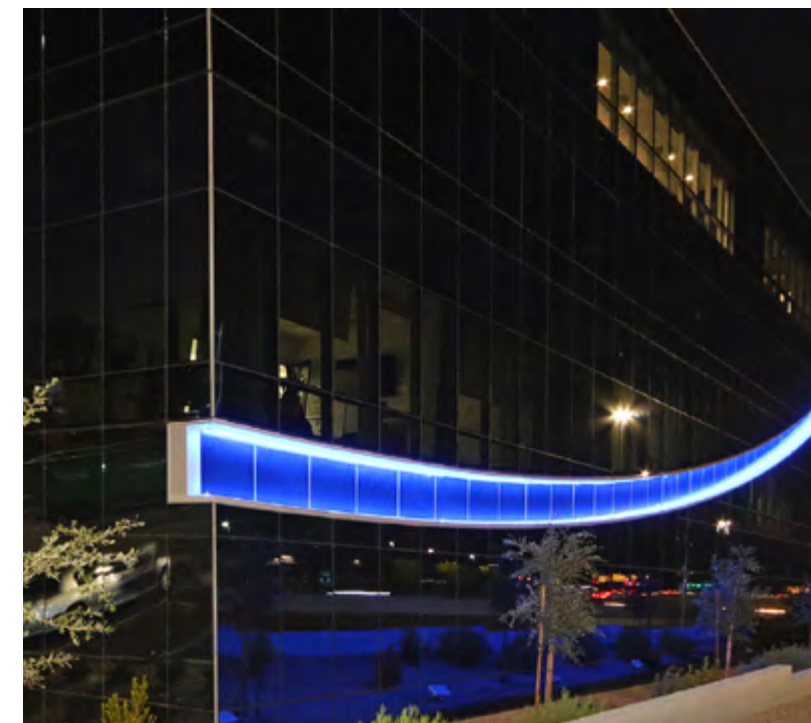
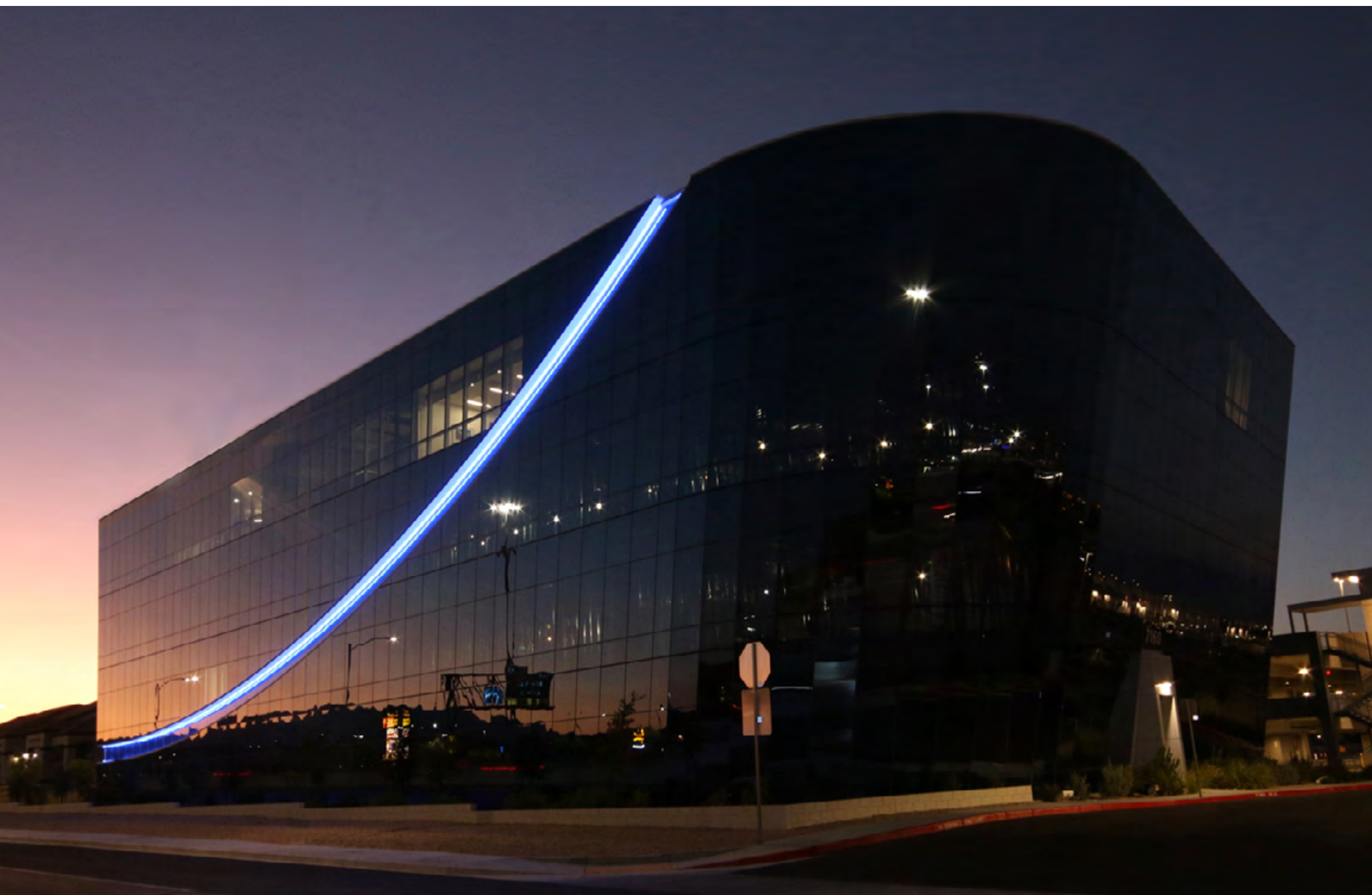


The **BL Neonview** perfectly complemented the Software Company project in California by enhancing the unique art features of the architectural installations. Its flexible design, capable of bending both horizontally and vertically, allowed for seamless integration into the creative display, while the pixel-chasing color palette enabled dynamic animations that brought the company's imaginative visions to life.

*Project: Software Company
Location: San Jose, CA, USA
Product: BL Neonview Side V Pixel ID*



Project: Sansone
Location: Las Vegas, NV, USA
Product: BL Neonview Side V RGBW



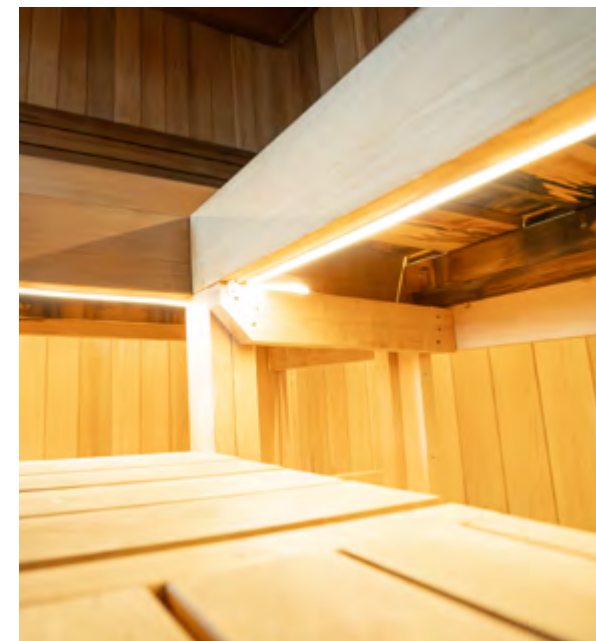
The **BL Neonview** represented an optimal choice for the Sansone project in Las Vegas, Nevada. With silicone housing that is UV resistant and rated to withstand temperatures up to 131°F (55°C), it ensures consistent performance in Nevada's harsh desert environment. Its color-changing capabilities and flexible design delivered vibrant, uniform illumination, perfectly highlighting the exterior architectural features of the office building.

Project: Sodicoor II
Location: Québec City, QC, Canada
Product: BL Neonview Side V 4000K IP67



BL Neonview was ideal for the Sodicoor II project in Quebec due to its exceptional performance in extreme cold environments. The silicone encapsulated diffuser is rated to withstand temperatures as low as -40°F (-40°C), ensuring consistent performance in Quebec's harsh winters.

Project: Tality Wellness Spa
Location: Vancouver, BC, Canada
Product: BL Neonview Sauna Flat 3500K



The **BL Neonview Sauna** proved an ideal fit for Tality Spa's newly renovated sauna, seamlessly combining style and functionality. Its high-temperature rating, withstanding up to 203°F (95°C), and IP68 protection ensure durability in 100% humidity conditions, while the elegant design and energy efficiency enhance the spa's holistic atmosphere, perfectly aligning with their wellness vision.

Project: True North Square
Location: Winnipeg, MB, Canada
Product: BL Neonview Dome RGBW



BL Neonview was best suited for the True North Square project in Winnipeg, where extreme cold was a significant challenge. Rated to withstand temperatures as low as -40°F (-40°C), ensured reliable performance. The wide 270° viewing angle provided uniform, dot-free illumination, while the RGBW LED allowed for custom colors, perfectly highlighting the building's exterior in harsh winter conditions.

The **BL Neonview Pixel** is a fantastic choice for enhancing the Adidas storefront, bringing a contemporary and inviting atmosphere to the space. With its vibrant pixel animations and colors, BL Neonview effectively draws in shoppers and creates an engaging experience. The integrated DMX decoder enables smooth pixel-chasing effects, perfectly complementing Adidas's interactive displays. This innovative lighting solution not only meets the specific space and budget constraints but also aligns beautifully with the fun, lifestyle-oriented vibe that defines the popular sportswear brand. It's a brilliant way to attract customers and elevate the overall shopping experience!

*Project: Adidas Store
Location: Toronto, ON, Canada
Product: BL Neonview Flat Pixel RGBW*



The **BL Neonview Mini** proved perfect for the Bryan County Gym in Richmond Hill, GA, where back-lit art and sharp bends posed key challenges. Its flexible low profile, minimal dimensions and tight bending radius allowed seamless integration into intricate designs, providing smooth, uniform illumination that perfectly highlighted the gym's exterior art features.

Project: Bryan County Gym and Soccer Complex
Location: Richmond Hill, GA, USA
Product: BL Neonview Mini Side V 4000K





BL Neonview perfectly suited the Interior Design Shop in Vancouver, BC, where aesthetics and uniform lighting were essential. Its flat lens profile and 120° beam angle provided smooth dot-free illumination, ensuring the shop's interior was evenly lit and enhancing the overall aesthetic appeal with its flexible silicone-encapsulated design.

*Project: Interior Design Shop
Location: Vancouver, BC, Canada
Product: BL Neonview Flat 3000K*

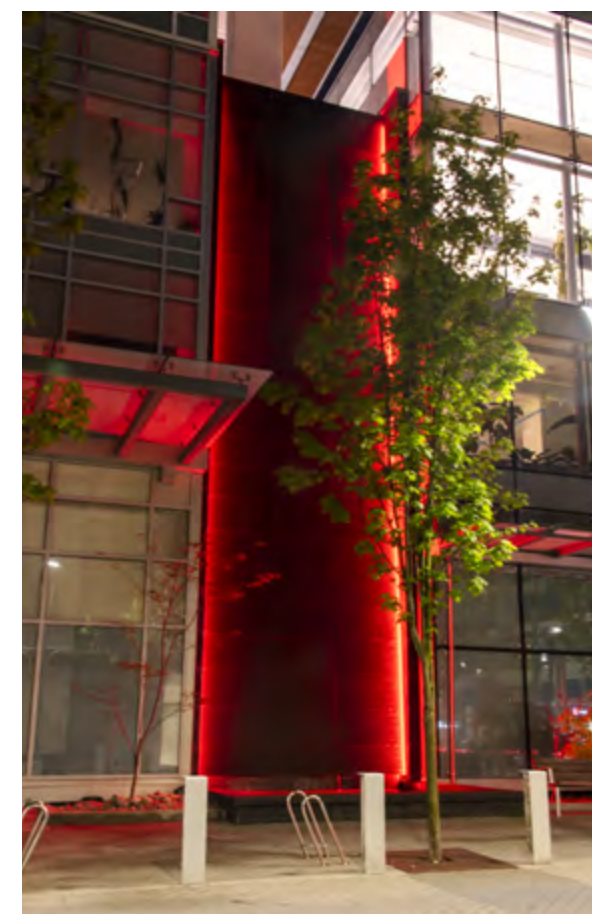
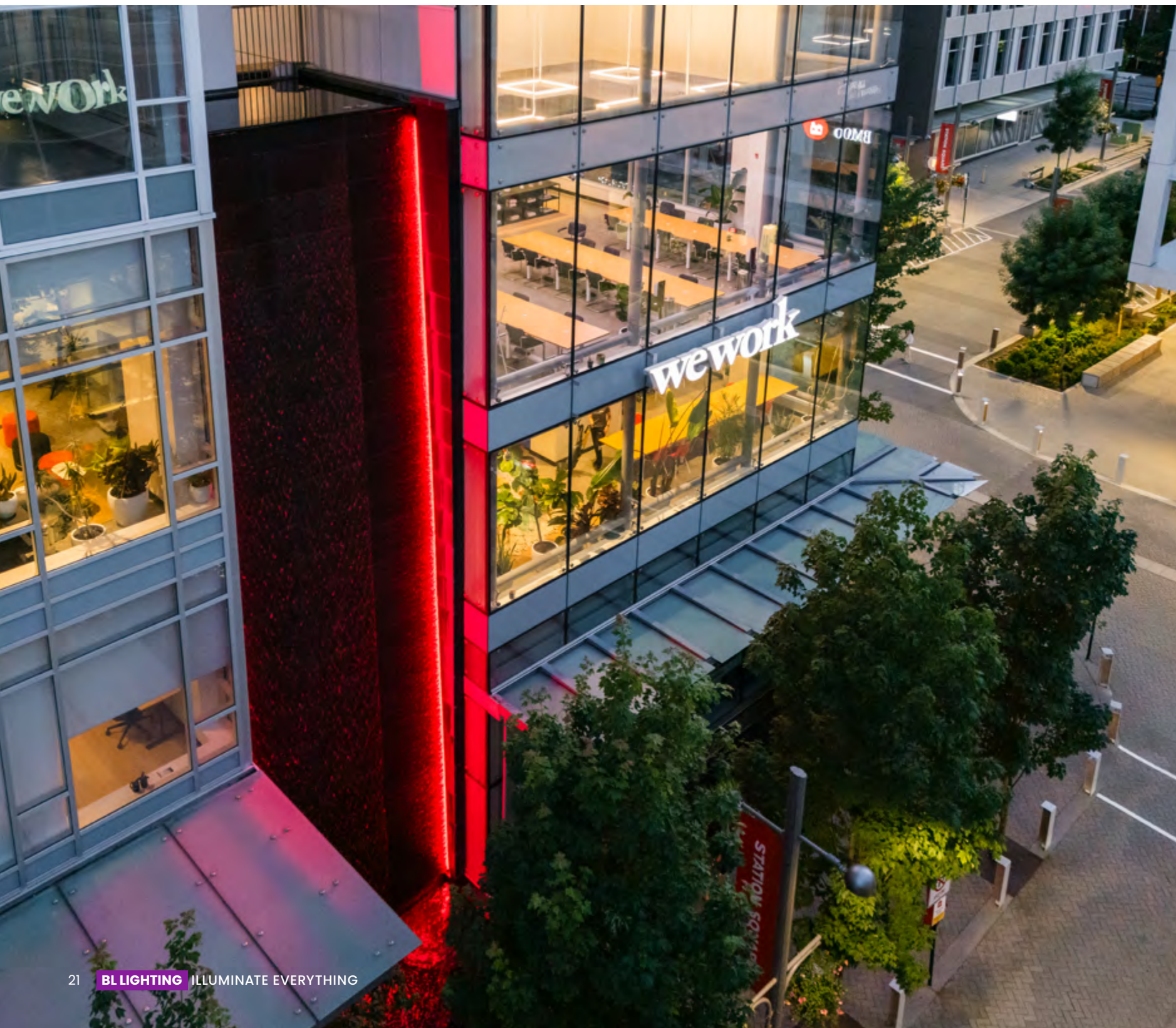
The **BL Neonview** was the go-to choice for the Tapestry Collection by Hilton in Mississauga, Ontario, where long runs and extreme cold presented challenges. Its flexible silicone encapsulated diffuser and temperature rating of -40°F (-40°C) ensured reliable performance in harsh conditions while providing uniform, dot-free illumination and customizable colors, enhancing the hotel's unique architectural features.



Project: Tapestry Collection by Hilton
Location: Mississauga, ON, Canada
Product: BL Neonview Flat RGBW



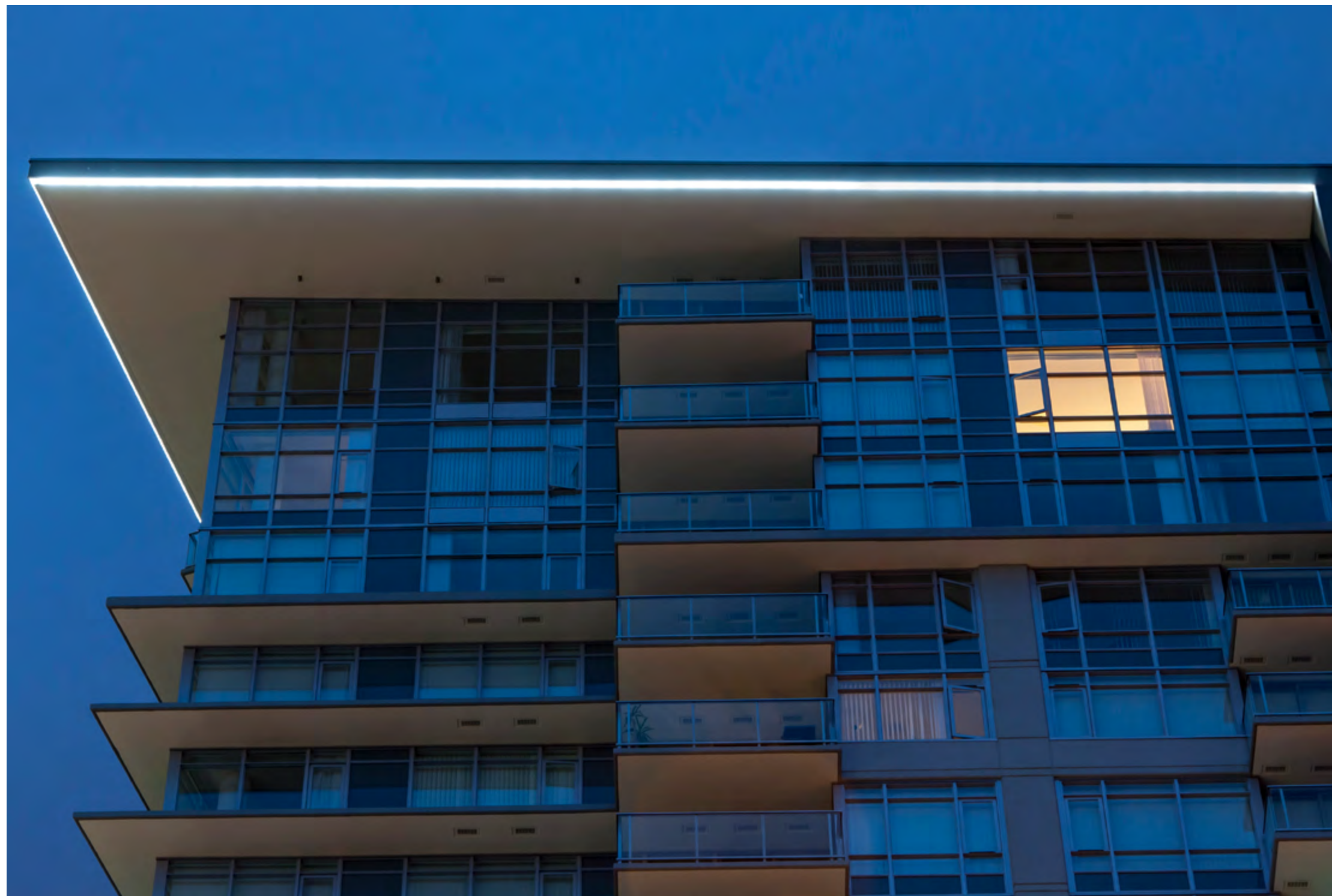
Project: Kingsway Water Feature
Location: Vancouver, BC, Canada
Product: BL Neonview Dome Red



The **BL Neonview** proved to be an excellent choice for the Kingsway Water Feature in Vancouver, BC, addressing the unique challenges of water exposure and long runs. Its IP68 rating for wet environments guarantees durability and reliability, delivering uniform, vibrant illumination and strong branding that enhances the stunning waterfall display.

Project: Kingsway Roof
Location: Vancouver, BC, Canada
Product: BL Neonview Dome 5700K

The **BL Neonview** was an excellent fit for the Kingsway Roof project in Vancouver, BC, where inverted installation and viewing angle were critical considerations. Its dome-shaped lens profile offers a wide 270° viewing angle and uniform illumination, ensuring the roof outline is visually striking and well-lit from all perspectives.





The **BL Neonview** was an exceptional choice for the Tram project at Orlando International Airport, where pixel effects and durability were paramount. Its ability to create dynamic animations and chase effects enhances the interior architectural lighting, ensuring a captivating experience for travelers navigating the Tram system.

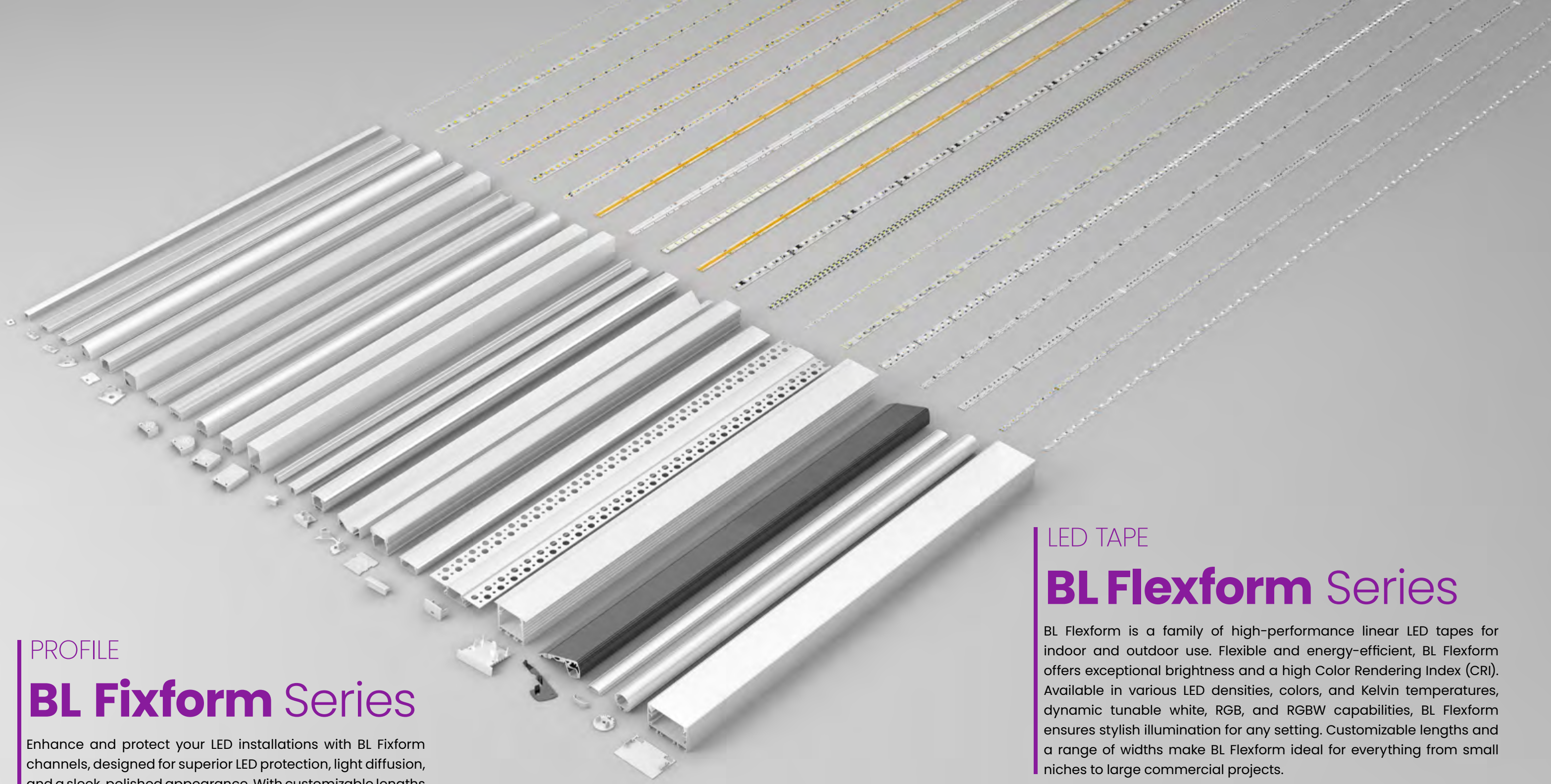
*Project: Tram at Orlando International Airport
Location: Orlando, FL, USA
Product: BL Neonview Dome Pixel ID RGBW*



Project: Pixel Wall Tech Company
Location: Vancouver, BC, Canada
Product: BL Neonview Dome Pixel ID

The **BL Neonview** offered an innovative solution for the Pixel Wall project at the Tech Company in Vancouver, with RGBW LED delivering a palette encompassing every color of the rainbow, evenly diffused behind the curving panels. Its custom control system enabled seamless wireless management of a large pixel quantity, allowing for captivating animations and customizable displays that highlight the driveway entrance and enhance the unique architectural features of the site.





PROFILE

BL Fixform Series

Enhance and protect your LED installations with BL Fixform channels, designed for superior LED protection, light diffusion, and a sleek, polished appearance. With customizable lengths made to order and quick ship options, BL Fixform ensures your lighting project meets its unique requirements swiftly and efficiently.



Product Family



LED TAPE

BL Flexform Series

BL Flexform is a family of high-performance linear LED tapes for indoor and outdoor use. Flexible and energy-efficient, BL Flexform offers exceptional brightness and a high Color Rendering Index (CRI). Available in various LED densities, colors, and Kelvin temperatures, dynamic tunable white, RGB, and RGBW capabilities, BL Flexform ensures stylish illumination for any setting. Customizable lengths and a range of widths make BL Flexform ideal for everything from small niches to large commercial projects.



Product Family



CCT Range: 1800 K - 6500 K
 Lumens: 63 lm/FT - 800 lm/FT
 Power: 0.7 W/FT - 8 W/FT



BL Flexform D3 and **BL Fixform S2215** perfectly addressed the challenges at H&M's flagship store in Times Square. These products provided precise, controlled lighting that highlighted architectural features while reducing glare on reflective surfaces, enhancing the store's modern design and expansive retail space.



Project: H&M
Location: Times Square, NY, USA
Product: BL Flexform D3 4000K, BL Fixform S2215



Project: Xenon Pharmaceuticals
Location: Burnaby, BC, Canada
Product: BL Flexform DFD3 4000K, BL Fixform RS2811



For the Xenon Pharmaceuticals project in Burnaby, BC, the **BL Flexform DFD3** ensured seamless, smooth, dot-free lighting that enhanced the break room's aesthetics without creating distracting hotspots.

Housed within the sleek **BL Fixform RS2811** mounting channel, this low-profile solution fit perfectly in tight spaces, illuminating reflective surfaces like marble countertops and high-gloss tiles.



BL Flexform DFD2 is the perfect addition to this Vancouver coffee shop, with a crisp line of smooth illumination that clearly defines the counter service area to patrons. DFD2 eliminates hot spots, ensuring a shadow free light experience around specular surfaces, such as marble counter tops.

Flush recessed into the bulkhead surface, **BL Fixform RS2811** integrates seamlessly into the design, providing a polished finish and enhancing the overall aesthetic of this trendy space.



Project: Cafe Bulkhead Lighting
Location: Vancouver, BC, Canada
Product: BL Flexform DFD2 3000K, BL Fixform RS2811

Project: Trevali Mining Corp. Office
Location: Vancouver, BC, Canada
Product: BL Flexform D2 3000K, BL Fixform R4435



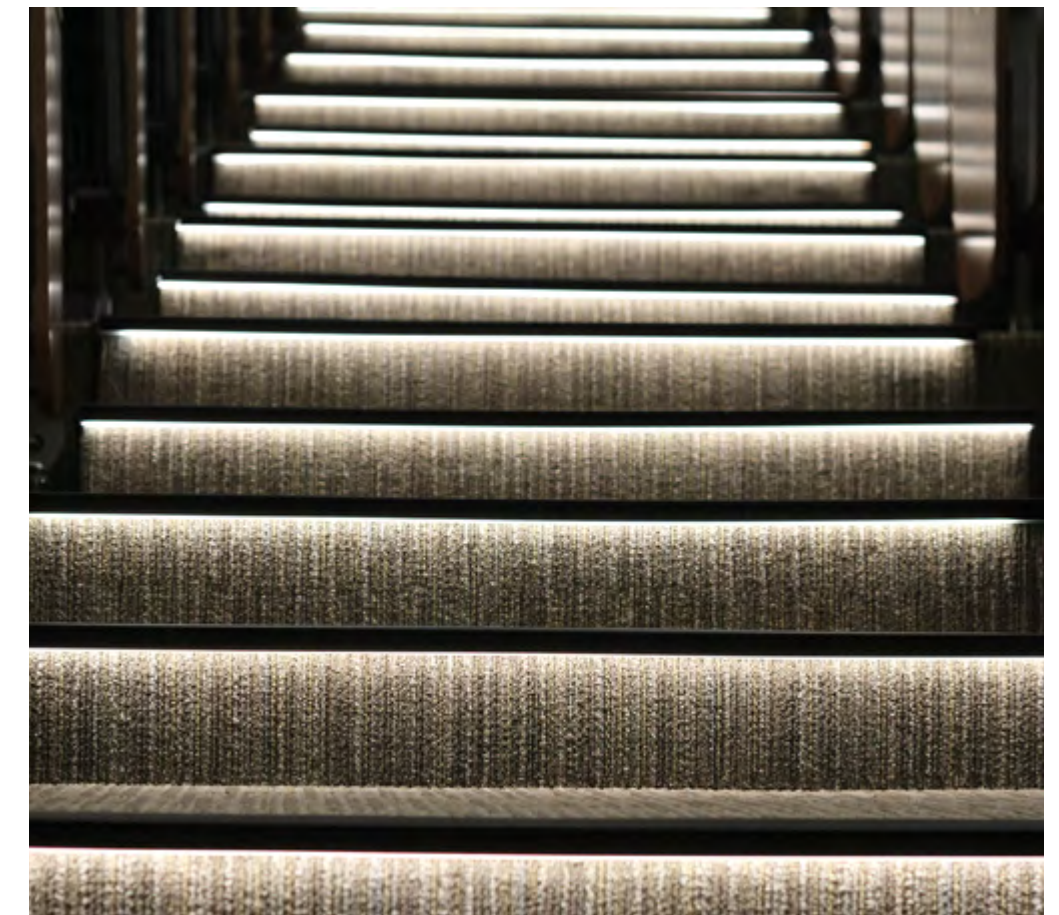
The **BL Flexform D2** made an excellent choice for the Trevali Mining Corp. office lounge in Vancouver, BC, where creating the right ambience and light output proved essential. This flexible, dimmable LED ribbon delivers high lumen output while integrating seamlessly into detailed designs.

The **BL Fixform R4435** profile ensured a polished finish, allowing for uniform illumination across walls and ceilings, effectively enhancing the space's overall aesthetic.



The **BL Flexform D2** delivers just the right amount of illumination in the University of British Columbia's Forest Sciences Centre Theater in Vancouver, BC, where integration into the stair nose feature to diffuse the light down the face of the riser is critical to achieve the desired visible step delineation.

BL Fixform ST5921 incorporates a step to floor reducer for a safe and smooth transition between surfaces, while its robust design ensures lasting performance in the busy auditorium setting. This combination effortlessly blends into the theater's aesthetic and delivers energy cost savings while enhancing overall functionality.



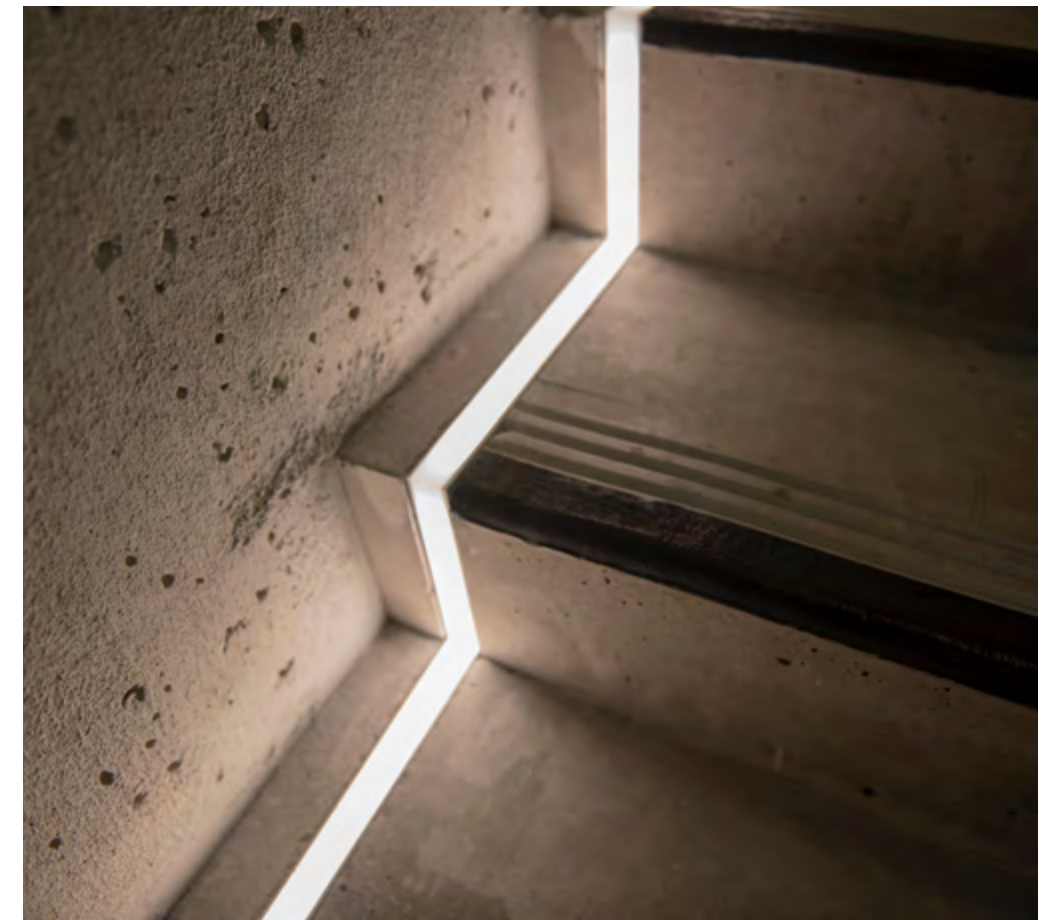
*Project: UBC Forest Sciences Centre Theatre
Location: Vancouver, BC, Canada
Product: BL Flexform D2 3500K, BL Fixform ST5921*

Project: Private Residence
Location: Vancouver, BC, Canada
Product: BL Flexform D3 3000K IP65



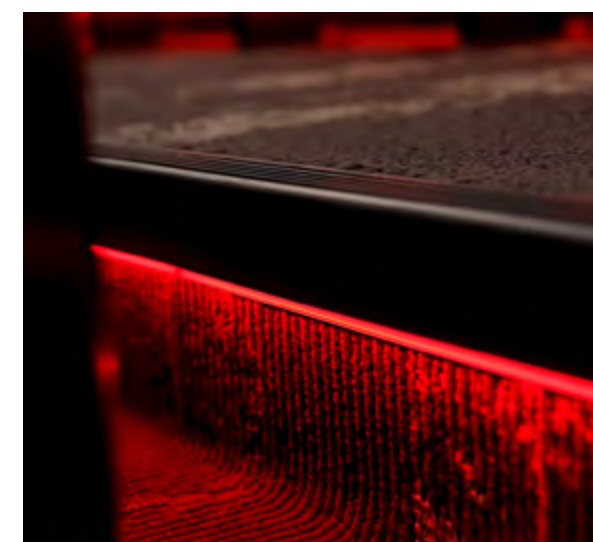
BL Flexform D3 proved to be the perfect fit for this private residence in Vancouver BC, where achieving uniform lighting in a wet location was essential. This flexible, dimmable LED ribbon delivers high lumen output while providing energy-efficient accents in the modern bathroom, enhancing both aesthetic and functionality. Its IP65 rating ensures durability and performance in moisture-prone areas, seamlessly integrating with the architectural design.

Project: Off-White
Location: Vancouver, BC, Canada
Product: BL Flexform D2 3000K IP65, BL Fixform R2626



BL Fixform R2626 and **BL Flexform D2** paired to create a perfect floor recessed lighting solution for the Off-White retail store in Vancouver. The sleek linear luminaires effortlessly blend into the store's luxurious design, delivering crisp, uniform illumination that enhances the shopping experience. With an impressive 4500 lbs load-bearing capacity, this system elevates the store's aesthetics while withstanding the demands of a high-traffic environment, ensuring a perfect balance of style, safety, and durability.

Project: UGA Foley Field Locker Room
Location: Athens, GA, USA
Product: BL Flexform DFD2 Red, BL Fixform SS1616



The **BL Flexform DFD2** coupled with **BL Fixform SS1616** made for an excellent choice for the University of Georgia's Foley Field Locker Room renovation. This combination delivered sleek, specialty red illumination with a seamless, dot-free appearance, reinforcing team identity and perfectly complementing the modern design and enhancing the overall atmosphere of the space.

BL Flexform D3 was an exceptional choice for the Vancouver Masonic Center. This flexible, high lumen output LED ribbon provides efficient, uniform illumination to enhance the traditionally styled space. The lighting shines brightly up from the coves, highlighting architectural details with a high CRI to ensure vibrant color accuracy reflected in the surrounding surfaces. Its compatibility with the design allowed for seamless integration, celebrating the center's rich heritage and adding a luxurious ambiance to its interior.

*Project: Vancouver Masonic Center
Location: Vancouver, BC, Canada
Product: BL Flexform D3 3000K, BL Fixform S2221*





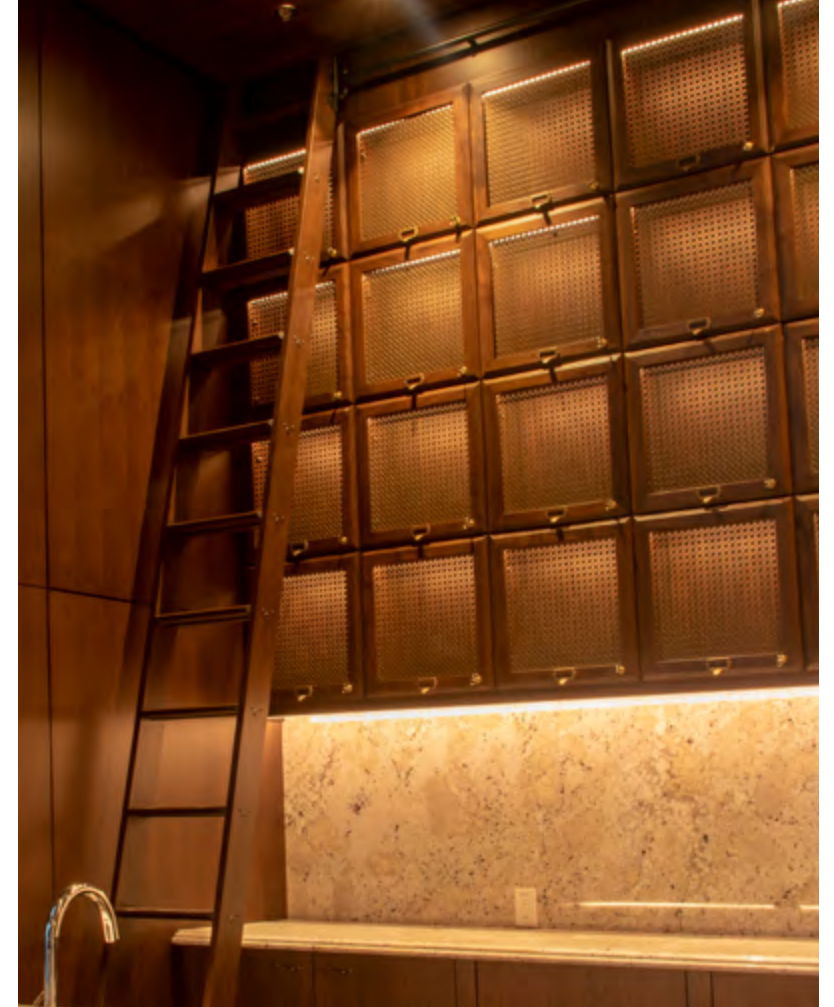
The **BL Flexform D2** in both 6500K and 3000K proved to be an excellent selection for the UBC Student Union Building in Vancouver, BC, where the ability to withstand outdoor conditions was essential. This versatile, dimmable LED ribbon delivered strong, high-output illumination while seamlessly integrating into the architectural design, enhancing various social and meeting spaces within the vibrant student hub. Its IP65 rating ensured resilience against the elements, making it ideal for this bustling campus location.

*Project: UBC Student Union Building
Location: Vancouver, BC, Canada
Product: BL Flexform D2 3000K & 6500K*



BL Flexform D3 paired with **BL Fixform S2215** was a perfect choice for the Vancouver Masonic Center. This flexible, high lumen output LED ribbon provided efficient, uniform lighting under cabinets, enhancing architectural features while creating a cohesive appearance. The low-profile round lens ensured minimal glare and seamless integration into the center's design, celebrating its rich history while offering modern functionality.

Project: Vancouver Masonic Center
Location: Vancouver, BC, Canada
Product: BL Flexform D3 3000K, BL Fixform S2215



Project: Hampton Inn
Location: Tampa, FL, USA
Product: BL Flexform RGBW

The Hampton Inn in Tampa, FL, needed an exterior architectural lighting solution that could withstand a wet environment while offering dynamic lighting effects. **BL Flexform RGBW**, with its flexible RGB and true white diodes, shines with vibrant color-changing illumination from the custom art panels enhancing the hotel's exterior. Its outdoor certification ensures durability, making it ideal for the hotel's prime location near key Tampa attractions.



OPTICAL FIBER

BL Fiberoptic Series

Transmitting light from a source over distance, BL Fiberoptic is manufactured in a range of diameters that can glow along the length of the fiber itself, as well as emit from the end points. Illumination radiates from the fiber while electricity and heat are safely contained to the light source. Optical Fiber offers easy maintenance, is waterproof, resistant to vibrations and extreme temperatures, and its flexibility allows for creation of one-of-a-kind custom lighting solutions. A variety of energy efficient BL Fibersource illuminators, end fittings and accessories are available to bring your project to life.



Product Family



3
YEAR
WARRANTY

15+
YEAR
LIFE EXPECTANCY



DIMMABLE



DIMX



CHEMICAL
RESISTANT



-40°F - 212°F
Extreme
Temperature



WHITE



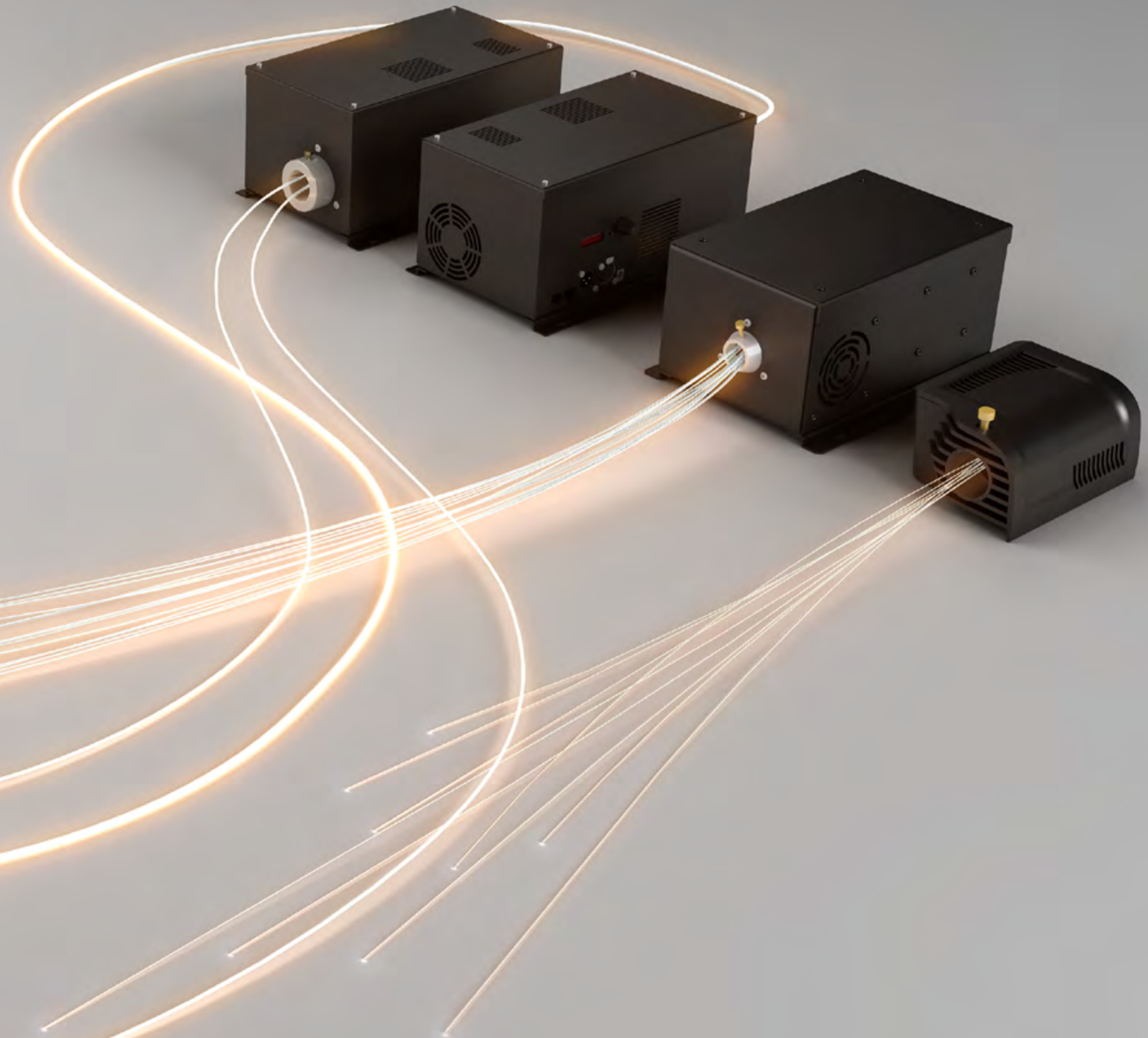
RGBW



TWINKLE
WHEEL



COLOR
WHEEL



CCT Range: 3000K - 65000K

BL Fiberoptic Endlight illuminates a mesmerizing night sky starfield installation in the kihêw waciston Indigenous Student Centre at MacEwan University. Its ingenious design transmits light from a single **BL Fibersource** Illuminator to each star endpoint, efficiently evoking the achakos ininewuk (Star People) and preserving ancestral constellation stories. Integrated into the ceiling above the wîwîp'son Indigenous Therapeutic Swing, the heat-free lighting fosters a soothing atmosphere for healing and cultural reflection, infusing the space with an outdoor essence. The system's flexibility and customizable length allowed for a one-of-a-kind, custom installation, elegantly weaving cultural significance into the architectural fabric.

*Project: Indigenous Student Centre at MacEwan University
Location: Edmonton, AB, Canada
Product: BL Fiberoptic Starfield*





Project: Helix Fiber Chandelier
Location: Irwindale, CA, USA
Product: BL Fiberoptic Sidelight, BL Fibersource RGBW



BL Fiberoptic Sidelight provided an exceptional solution for the Helix Fiber Chandelier in this private residence in Laguna Hills, CA, where achieving a one-of-a-kind custom luminaire and captivating color effects proved essential. The clear, solid-core fiber emits a 360° of soft neon-like glow, allowing for flexible, intricate bends that bring the chandelier's distinctive double helix design to life. Paired with a **BL Fibersource RGBW** illuminator for dynamic color-changing effects, the ensemble creates an eye-catching visual centerpiece suspended above the main entrance.



Project: Custom Chandelier The Rutledge at the Four Seasons
Location: Nashville, TN, USA
Product: BL Fiberoptic Sidelight

BL Fiberoptic Sidelight seamlessly integrated with these unique drop-shaped end fittings, resulting in a striking custom chandelier that complements the sophisticated, art-filled environment of The Rutledge at the Four Seasons in downtown Nashville. The optical fiber's durability and safe, heat-free operation ensure it's suitability for this high-end installation.





BL LUMINAIRE

ILLUMINATE EVERYTHING with our robust and elegant family of luminaires. With low maintenance and high efficiency, BL LUMINAIRE provide vibrant and dynamic lighting solutions for facades, fountains, water features, signage, in-ground lights, accent lighting and offer a multitude of options to highlight architectural features, with just the right light.

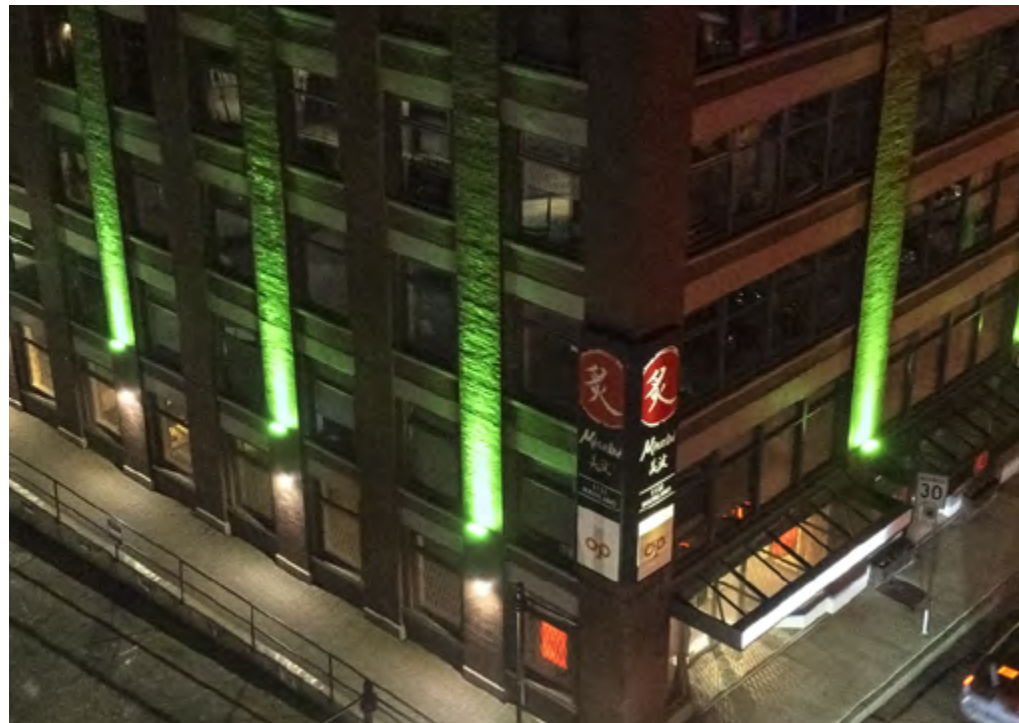


Product Family

CCT Range: 3000K - 6500K
 Lumens: 6 lm/FT - 10260 lm/FT
 Power: 2.7 W/FT - 150 W/FT

BL Areeflood BX3823 RGBW serves as a superior solution for lighting up Yaletown's lively outdoor areas. The robust 10,000-lumen output, versatile beam angles, and seamless integration with DMX512 control allow for tailored, dynamic lighting effects that perfectly complement the district's trendy vibe. The floodlight's durable design and IP66 rating ensured it could withstand Vancouver's varying weather, making it ideal for this prominent project.

*Project: Yaletown
Location: Vancouver, BC, Canada
Product: BL Areeflood BX3823 RGBW*



BL Arealinear LN1312 is optimal for the Vancouver International Airport Air Traffic Control Tower project due to its ability to deliver long-distance washes and dynamic color changes. With a powerful output of up to 9,000 lumens and a reach of over 300 feet, it provides vibrant illumination while enhancing the tower's architectural features, ensuring high visibility and aesthetics while withstanding the challenges of Vancouver's wet west coast weather.

*Project: Vancouver International Airport
Location: Vancouver, BC, Canada
Product: BL Arealinear LN1312 RGBW*

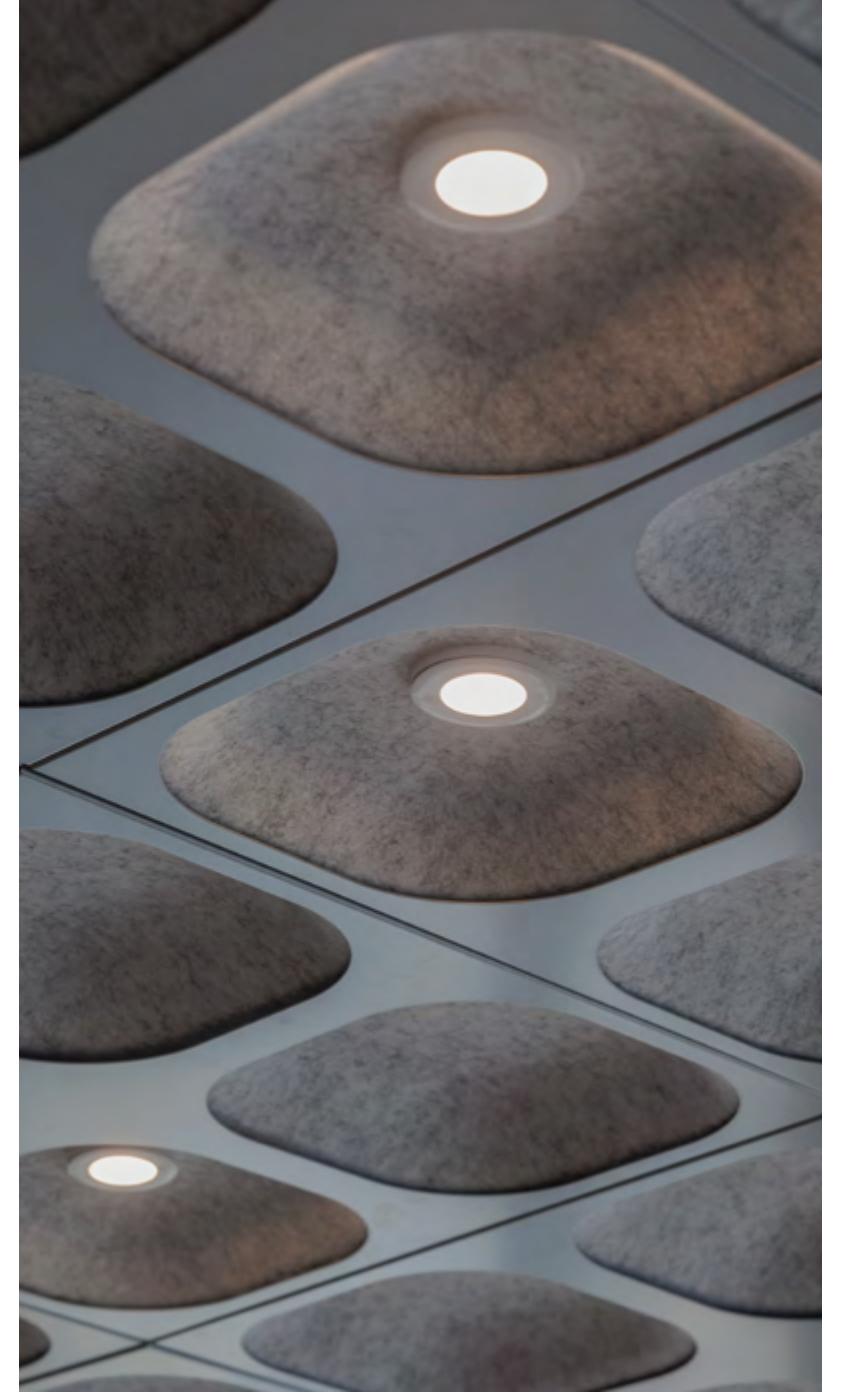


BL Arealinear LN8286 elegantly highlights narrow columns with a 30° beam angle option, enhancing the Edwardian facade. Its sleek design and robust build ensure sophisticated illumination, showcasing the grandeur of the structure while preserving the historic charm of this iconic Vancouver landmark.

*Project: Heritage Hall
Location: Vancouver, BC, Canada
Product: BL Arealinear LN8286 3000K*



Project: Accenture Office
Location: Montreal, QC, Canada
Product: BL Puck RD 3000K



BL Puck RD lights deliver artistic overhead accents and general illumination in Montreal's Accenture office, combining sleek, low-profile design with high efficiency to support sustainability goals. Our puck lights seamlessly adapt to the unique installation, elegantly diffusing light to highlight the distinctive ceiling design and enhance the modern aesthetic of this innovative workspace.



BL CATENARY

Our catenary lighting systems provide a versatile, visually dynamic solution for illuminating outdoor spaces by suspending luminaires on cables between buildings, poles, or structures. Ideal for streetscapes, plazas, and pedestrian areas, overhead lighting enhances both aesthetics and functionality, creating inviting environments while optimizing space below. Highly adaptable, catenary lighting offers flexibility in placement and customization, making it a perfect fit for diverse architectural designs and lighting needs.



Product Family



Project: The Shops at Wiregrass Open Air Mall
Location: Wesley Chapel, FL, USA
Product: BL Spotglobe LED 3000K

Suspended elegantly above the pedestrian walkways and plazas at The Shops at Wiregrass Open Air Mall, **BL Spotglobe LED** string lights add festive charm and ambiance to the outdoor environment. These versatile, customizable catenary lights enhance the open-air experience, and create a welcoming atmosphere for Tampa Bay's premier lifestyle destination.



POWER & CONTROLS

Take charge of your luminaires with BL Controls! Our DMX and Bluetooth systems have been designed for full system compatibility, convenience, and user experience in mind. With intuitive interfaces, easy installation, programming services, and full technical support, BL Lighting has specification grade controls solutions for any RGBW, Tunable White, Pixel or Dim To Warm lighting project.

With our broad spectrum of UL listed LED Driver offerings, from 10 watts up to 288 watts, there is a model suitable for any application. Whether you require wet location rated, universal input voltage, an integrated wire housing enclosure with knockouts, or compact drivers suitable for installation into junction boxes, options for 0-10V, Triac, Phase Cut, MLV, and ELV are readily available to fulfill any dimming protocol or control specification.



Product Family - Power



Product Family - Controls

OUR SERVICES

From design and specification assistance, measurement takeoff, professional rendering services, lighting calculations, detailed layouts and wiring diagrams, to providing custom manufacturing solutions and on-site system commissioning, BL Lighting ensures every aspect of your project is covered.

BL Technical Services



Lighting Control & Programming



Mock-ups, Samples & Dynamic Demonstrations



Custom Wiring Diagrams & 3D Renderings



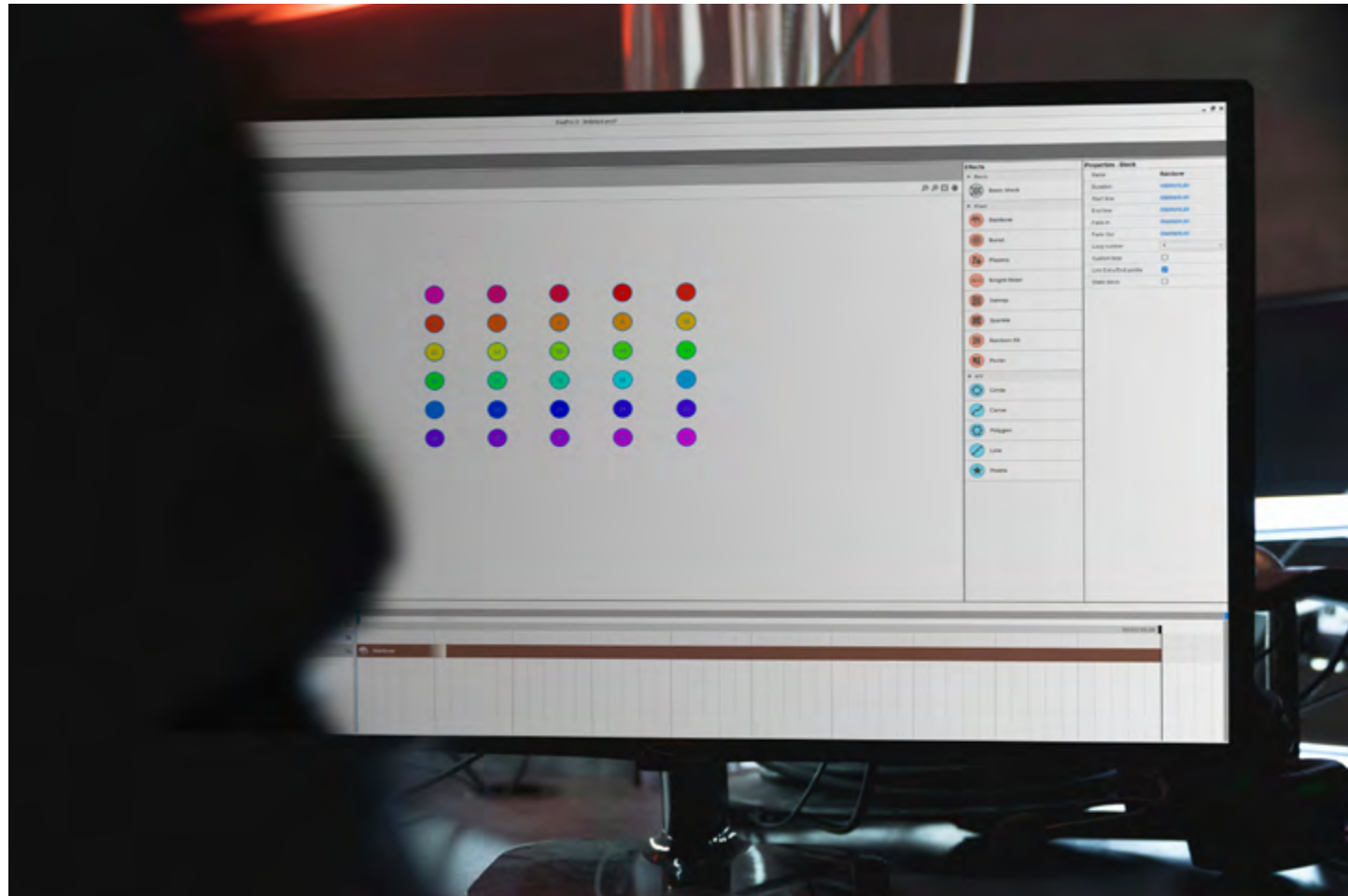
Training & On-Site Commissioning

Email: BLSupport@BLLighting.com
Telephone: 1-604-874-4405
Toll free: 1-888-874-4405

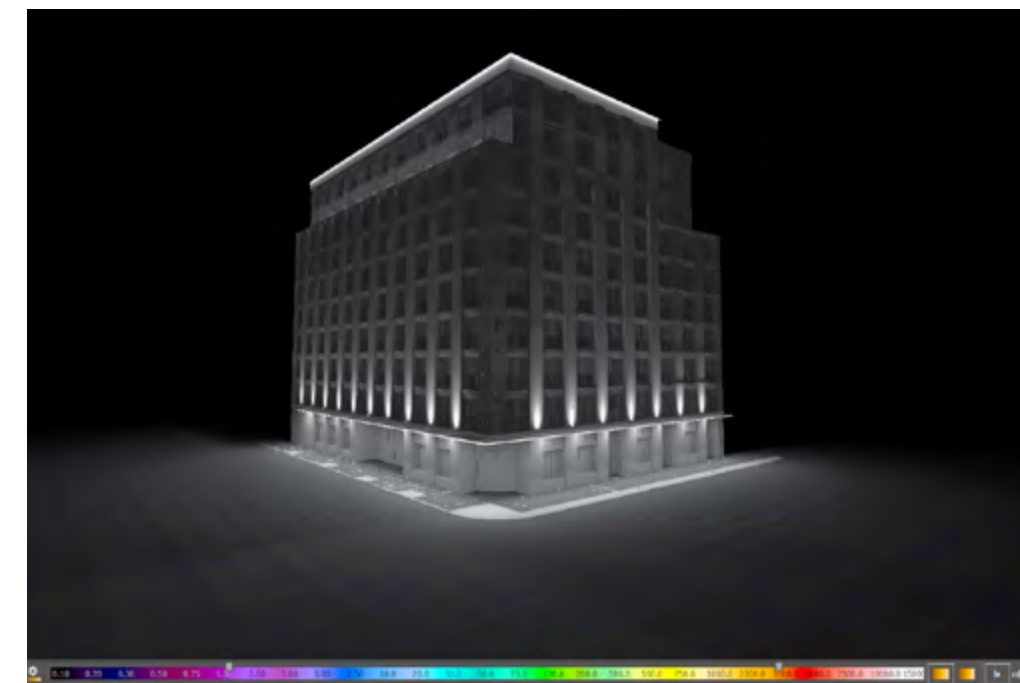
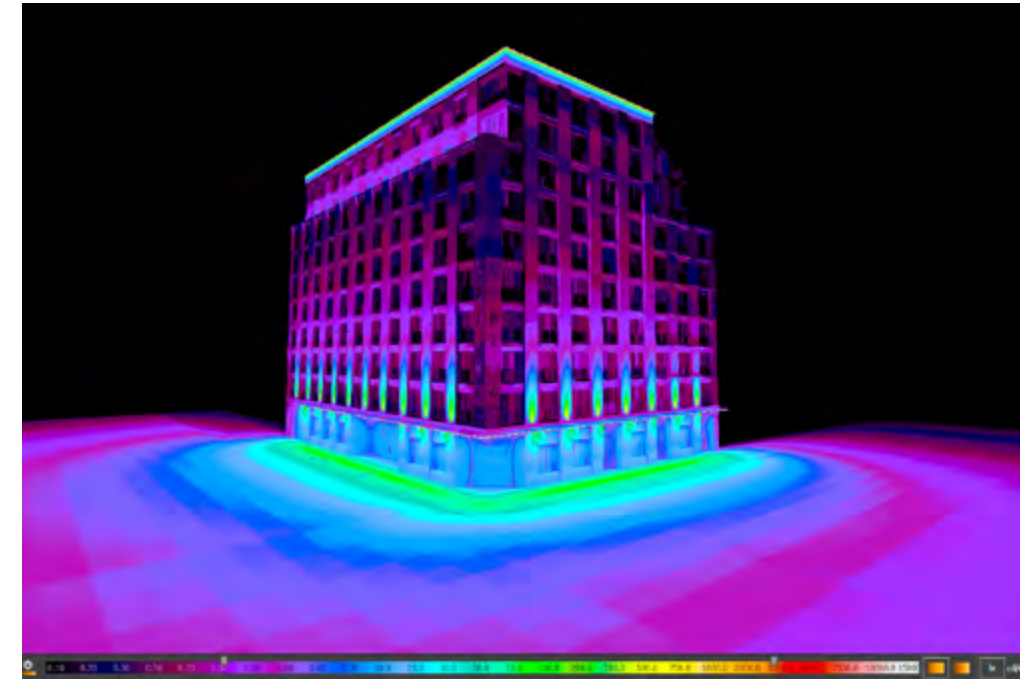
LIGHTING PROGRAMMING With our Architectural Lighting Control and Programming services, we'll guide you through the activation of exciting visual displays and help you utilize the media of light, adding color & movement to transform an illuminated exhibit into an immersive experience.

With our range of unique control options we can program scenes, schedules, and lighting sequences per your exact specifications to provide an out-of-the-box dynamic lighting solution. Take your landmark lighting projects to the next level with pixel chasing, glowing and color changing animations. New technologies allow us to remotely handle your start-up and troubleshooting needs with ease.

Looking for more inspiration? Request a demonstration today!



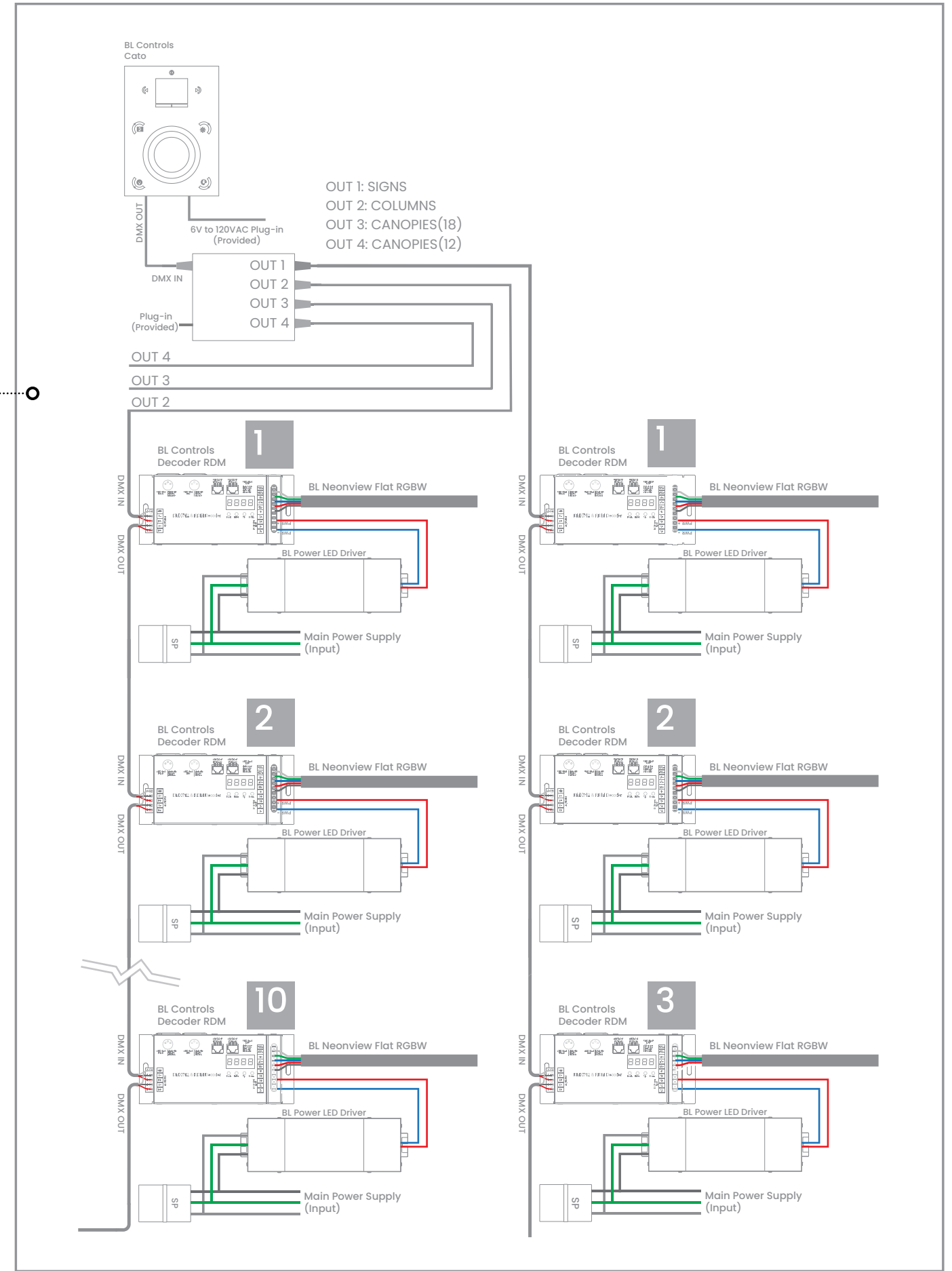
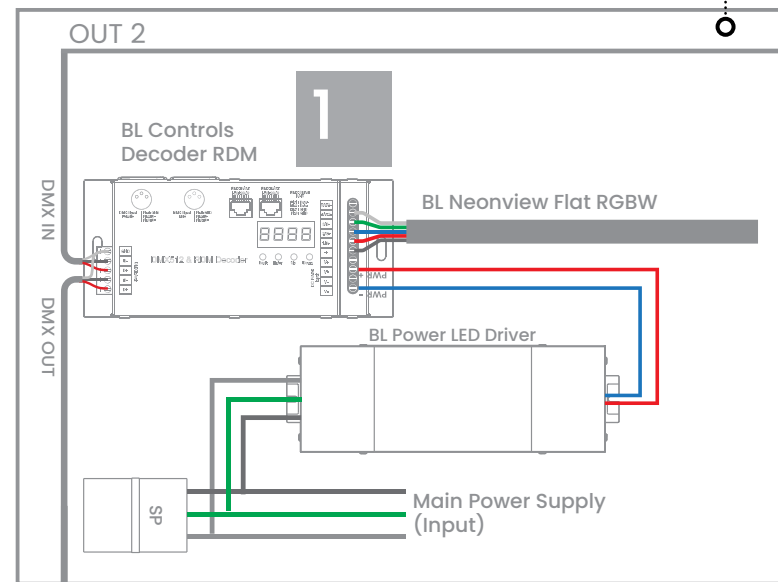
LIGHTING ANALYSIS Our expert technicians utilize state-of-the-art AGi32 software to deliver precise lighting calculations for your projects. Whether for interior or exterior applications, our Lighting Analysis service ensures optimal lighting design, balancing aesthetics and functionality. With accurate simulations and detailed reports, we help you achieve the perfect illumination while meeting industry standards and client requirements.



CUSTOM WIRING DIAGRAMS For projects big and small, allow us to bring clarity and simplify the installation process. Custom wiring and layout diagrams are available to help you map out a successful installation.

Technical design and layout consultations may be supplemented with detailed, project specific, wiring and layout diagrams upon request, and we are always available to educate your installer on wiring schematics and installation details.

BL Lighting is committed to providing superior customer service and support to ensure every installation is a success.



Project: Software Company
Location: San Jose, CA, USA
Product: BL Neonview Side V Pixel ID



RENDERING EFFECT In the initial stages of the project, the BL Lighting team created an intricate 3D color rendering to vividly illustrate the potential of the BL Neonview Pixel system. This professional visualization captured the unique art features and dynamic lighting effects, showcasing how the exterior architectural design would harmonize with the software company's imaginative vision.



FINAL RESULTS The final installation perfectly mirrors the original rendering, demonstrating BL Lighting's commitment to transform customer visions into reality. BL Neonview Pixel's ability to create dynamic animations and captivating pixel effects enhanced the architectural art installations, resulting in a stunning visual experience that exceeded expectations and beautifully complemented this high-end software company's design ethos.

Founded
1986

Continents
6

Agencies throughout
North America
60+

Lighting Projects Worldwide
\$500,000,000+

**We bring unmatched
knowledge and expertise
to flawlessly execute
every project.**



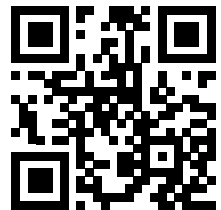
● Agencies North America
■ Lighting Projects Worldwide

BL LIGHTING

111 - 8838 Heather St., Vancouver, BC. Canada. V6P 3S8
P: 1-604-874-4405 Toll free: 1-888-874-4405

General Inquiry : BLInfo@BLLighting.com
Technical Inquiry : BLSupport@BLLighting.com
Sales Inquiry : BLSales@BLLighting.com

Copyright © BL INNOVATIVE LIGHTING. All Rights Reserved.



WWW.BLLIGHTING.COM