



Please note that these instructions are guidelines only and in no way supersede any construction or installation standards.

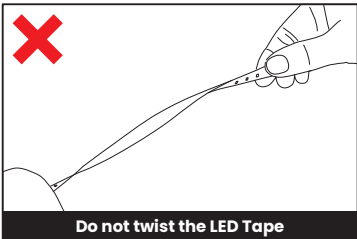
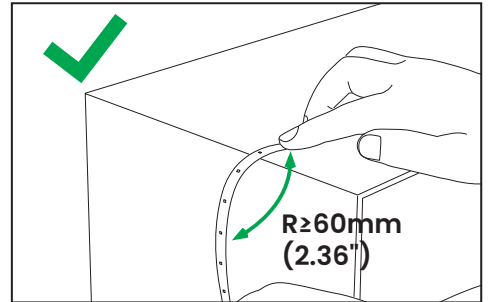
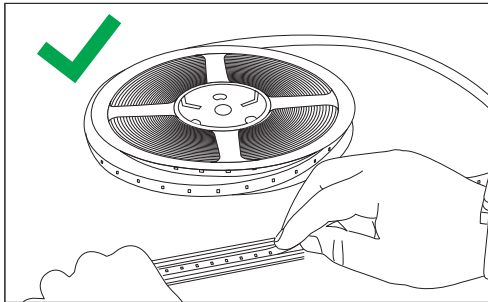
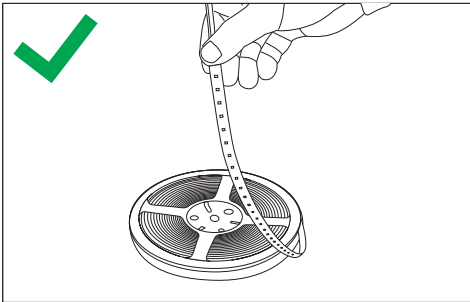
**ATTENTION**

- There is potential danger of electrical shock when operating electrical components.
- Ensure power is turned OFF prior to beginning installation or maintenance.
- Luminaires must be installed by a licensed Electrician and in accordance with all National and Local Electrical and Building codes.

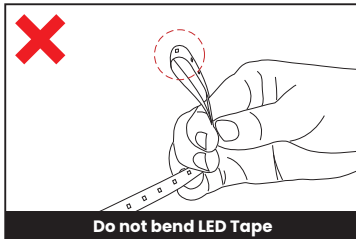
Never power the LED Tape on when coiled on a reel.  
 Do not stare directly into the LED lights when illuminated.  
 Do not connect more than 16'-4" (5M) in a single length.  
 Secure and route wires to avoid being pinched or damaged.  
 Verify polarity for 12V and 24V connections, positive (+) to positive and negative (-) to negative.  
 Verify LED Driver output matches your LED Tape, 12VDC or 24VDC.  
 Never connect LED Tape directly to a 120V AC power source.

For best performance, do not load a DC power source over 80% of its labeled rating.  
 Do not install indoor IP20 rated LED Tapes in areas that are exposed to the elements.  
 Suitable for dry location only.  
 Keep out of reach of children.

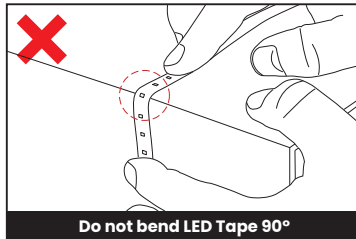
To ensure proper functioning, choose a power supply that matches the power requirements of your LED Tape, and make sure the load capacity of the power supply is 20% higher than the power requirements of the LED. For LED Tapes with a power rating in excess of 4W/FT, it is recommended to install them in an aluminum channel to enhance heat dissipation, thus improving their longevity.



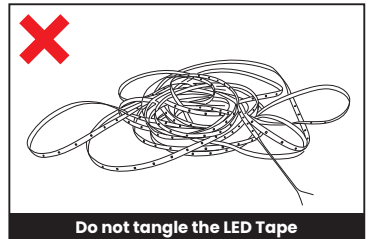
Do not twist the LED Tape



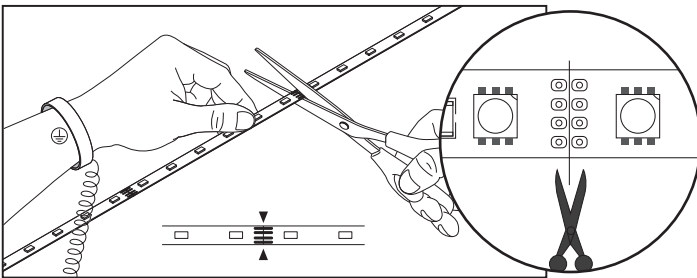
Do not bend LED Tape



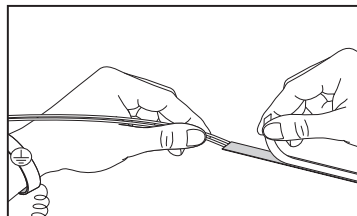
Do not bend LED Tape 90°



Do not tangle the LED Tape

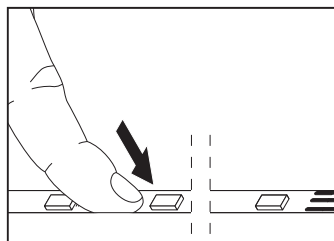


When cutting the LED Tape, it is recommended to wear an electrostatic ring. Measure to required length. Using sharp scissors, cut directly in the centre of the designated markings, do not cut on the hard solder points. Cutting anywhere else will result in damage to the LED tape and will void warranty.



The LED Tape comes with a 3M adhesive backing which can be gently pressed onto the mounting surface or into aluminum channel after removing the protective film. Ensure mounting surface is clean and dry prior to installing the LED Tape.

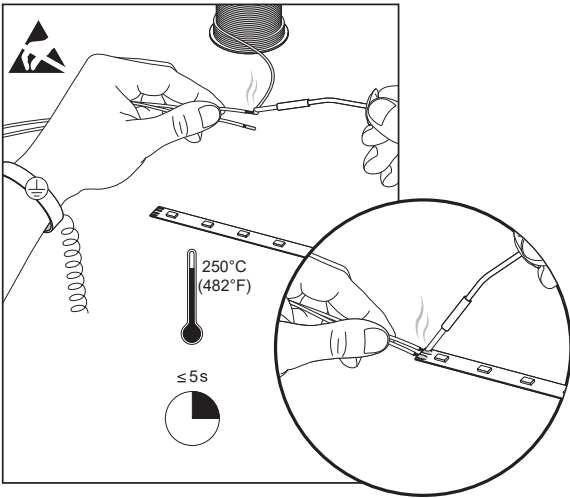
Dry fit the LED Tape to the desired location prior to removing the adhesive backing. When installing into aluminum channel, centre the LEDs starting 1/8" (3mm) away from the end.



Hold LED Tape taught to clean, dry mounting surface.

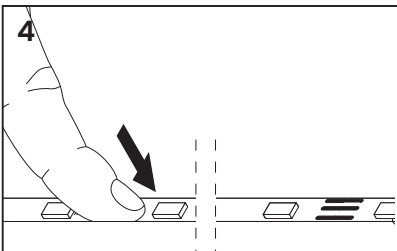
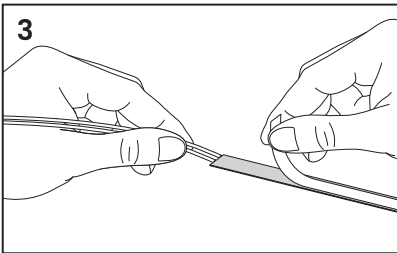
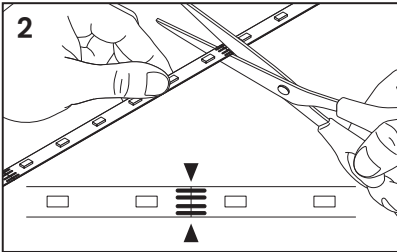
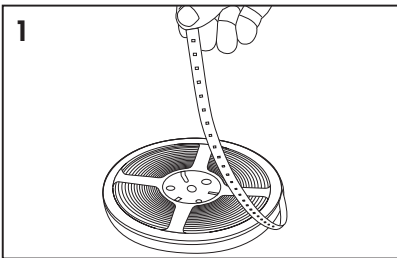
Press firmly along the length of the LED Tape. Do not exert excessive pressure, or apply a roller on the LEDs and resistors, as this may damage the LED.



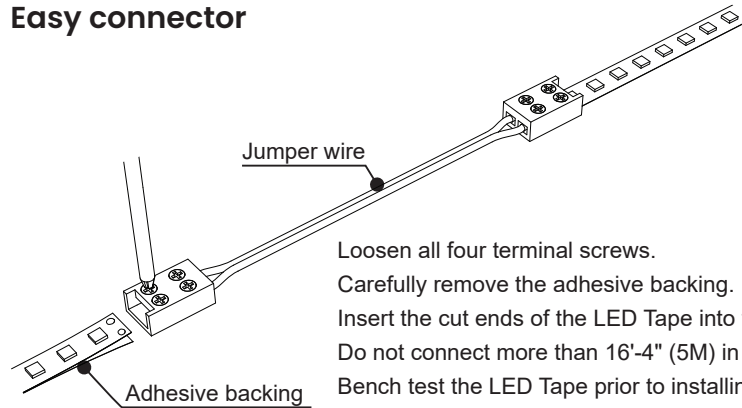


### Soldering

When connecting two segments with a soldering iron, ensure that the heat does not exceed 250°C (482°F) and the soldering time is less than 5 seconds. Solder conductors directly onto LED Tape at the marked points, using appropriate sized wire for voltage drop. Standard size wire is 20 AWG. It is recommended to wear an electrostatic ring when soldering.



### Easy connector



Loosen all four terminal screws.  
Carefully remove the adhesive backing.  
Insert the cut ends of the LED Tape into the connector.  
Do not connect more than 16'-4" (5M) in a single length.  
Bench test the LED Tape prior to installing.

