



BL LIGHTING
SINCE 1986

BL Controls AKD Node Basic Setup Guide



BL LIGHTING

ILLUMINATE EVERYTHING

111 - 8838 Heather St. Vancouver, BC, Canada. V6P 3S8
P: 1-604-874-4405 E: info@bllighting.com
Copyright © BL INNOVATIVE LIGHTING. All Rights Reserved.

bllighting.com



For this device you will need

- 1 PoE enabled network switch
- 1 or more RJ45 ethernet cables

1 - Plug in your ethernet cable into the BL 4 Port ArtNet DMX Node and connect it to your PoE enabled network switch.

2 - Download the eDMX Configuration Utility, it can be found here <https://dmxking.com/artnetsacn/edmx4-pro> under the downloads tab.

- The BL 4 Port ArtNet DMX node is preset with static network settings. You will need to configure your network settings to interface with the device. The default settings are as follows:

Parameter	Default Setting
IP Address	192.168.0.112
Subnet Mask	255.255.255.0
Default Gateway	192.168.0.254
IGMPv2 Unsolicited Report	<i>Unchecked</i>
Network Mode	Static IP address

3 - Navigate to your PC's Network settings and set your PC to Static IP.

Use the following IP address:

IP address:	192 . 168 . 50 . 200
Subnet mask:	255 . 255 . 255 . 0
Default gateway:	192 . 168 . 50 . 1

Your PC's IP address will need to match the format of your Gateway IP address.

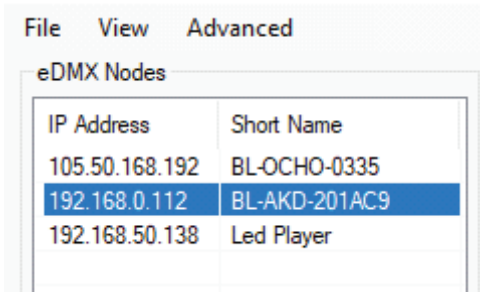
To find your PC's current Gateway address open "Command Prompt" window and type "ipconfig". Your current IP address will be displayed along with your Gateways IP address.

```
Ethernet adapter Ethernet:  
  
Connection-specific DNS Suffix . . :  
Link-local IPv6 Address . . . . . : fe80::9aa:6f9f:  
IPv4 Address. . . . . : 192.168.50.200  
Subnet Mask . . . . . : 255.255.255.0  
Default Gateway . . . . . : 192.168.50.1
```

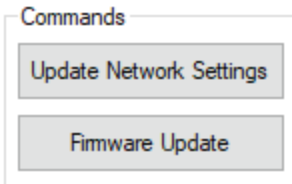
4 - Once your network configuration has been completed open eDMX Configuration Utility



5 - On left side of the program window it will display list of available devices. Select your device. Device will appear as "BL-AKD-xxxxxx"



6 - After selecting the correct device from the list, navigate to the IP address settings and enter an IP address to match the format of the IP address you set for you PC.
Ex. If you previously set your PC's address to 192.168.50.5 your device address needs to be set to 192.168.50.xxx
Select "Update Network" settings.



Your device is now ready. For advanced functions, setup and support please contact info@bllighting.com.