

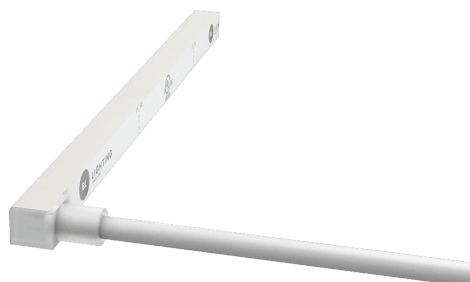
BL neonVIEW

Diffused, Flexible, Linear LED Lighting,
Side Emitting, 24VDC, Constant Voltage

MINI SIDE SI SC

Side Light, Silicone, Single color

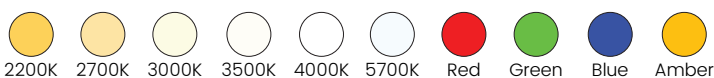
Printed



Certification



Lighting



Power	* 1.37 W/FT
Beam Angle	120°
Average Life	50,000 Hours
Lumens	* 19-118 lm/FT
Efficacy	* 14-86 lm/W

Electrical

Control	0-10V, MLV, DMX, Bluetooth
Input Voltage	24VDC
Max Input Current	4.12A (White)
Connections	18AWG, Copper Conductors
Operating Temperature	-40°F to 131°F (-40°C to 55°C)
Circuit	Class 2

Mechanical

Housing Construction	Injection Moulded White Silicone
Cutting Increments	3-9/32" (83.3mm)
Maximum Run Length	* 49FT (15m)
Medial Bend Radius	100mm (3.11")
Environmental	IP68 (Seamless Injection Molded)
Mounting	Clip, Track

Accessories

NVSTK	** Factory installed termination kit
NVSJC	Factory installed jumper cable
NVSCP	Surface Mounting Clip
NVSMCH	Surface Mounting Channel
NVSRMC	Recessed Mounting Clip
NVSRMCH	Recessed Mounting Channel

* Please refer to the performance table on the following page

**Multiple Lead Orientation options available

PROJECT

CLIENT

TYPE

Solid State Lighting is sensitive to power fluctuations
Surge protection is highly recommended for all LED lighting products and should be on a designated circuit to protect against premature failure
Lack of surge protection may void your warranty

For more information, please download the
BL LIGHTING catalogue

BL LIGHTING. ILLUMINATE EVERYTHING

111 - 8838 Heather St. Vancouver, BC, Canada. V6P 3S8
P: 1-604-874-4405 E: info@blighting.com
Copyright © BL INNOVATIVE LIGHTING. All Rights Reserved.

blighting.com



BL neonVIEW

Diffused, Flexible, Linear LED Lighting,
Side Emitting, 24VDC, Constant Voltage

MINI SIDE SI SC

Side Light, Silicone, Single color

Printed

Performance

CCT/Color	Load	Lumens	Efficacy	Max. Length	Cutting Increments
2200K	1.37 W/FT	67 lm/FT	49 lm/W	49 ft 2 in	3-9/32 in (83.3mm)
2700K	1.37 W/FT	83 lm/FT	60 lm/W	49 ft 2 in	3-9/32 in (83.3mm)
3000K	1.37 W/FT	90 lm/FT	66 lm/W	49 ft 2 in	3-9/32 in (83.3mm)
3500K	1.37 W/FT	85 lm/FT	62 lm/W	49 ft 2 in	3-9/32 in (83.3mm)
4000K	1.37 W/FT	84 lm/FT	62 lm/W	49 ft 2 in	3-9/32 in (83.3mm)
5700K	1.37 W/FT	84 lm/FT	61 lm/W	49 ft 2 in	3-9/32 in (83.3mm)
Red	1.37 W/FT	31 lm/FT	23 lm/W	49 ft 2 in	4-59/64 in (125mm)
Green	1.37 W/FT	118 lm/FT	86 lm/W	49 ft 2 in	3-9/32 in (83.3mm)
Blue	1.37 W/FT	19 lm/FT	14 lm/W	49 ft 2 in	3-9/32 in (83.3mm)
Amber	1.37 W/FT	29 lm/FT	21 lm/W	49 ft 2 in	4-59/64 in (125mm)

Ordering

Product Name

BL neonVIEW MINI SIDE SI SC

CCT/Color

2200K
2700K
3000K
3500K
4000K
5700K
Red
Green
Blue
Amber

Lead Orientation

NVSTKBC = Back Lead
NVSTKEC = End Lead
NVSTKRSC = Right Side Lead
NVSTKLSC = Left Side Lead

Mounting Accessories

NVSCP = Mounting Clip
NVSMCH = Mounting Channel
NVSRMC = Recessed Mounting Clip
NVSRMCH = Recessed Mounting Channel

PROJECT

CLIENT

TYPE

Solid State Lighting is sensitive to power fluctuations
Surge protection is highly recommended for all LED lighting products and should be on a designated circuit to protect against premature failure
Lack of surge protection may void your warranty

For more information, please download the
BL LIGHTING catalogue

BL LIGHTING. ILLUMINATE EVERYTHING

111 - 8838 Heather St. Vancouver, BC, Canada. V6P 3S8
P: 1-604-874-4405 E: info@blighting.com
Copyright © BL INNOVATIVE LIGHTING. All Rights Reserved.

blighting.com



BL neonVIEW

Diffused, Flexible, Linear LED Lighting,
Side Emitting, 24VDC, Constant Voltage

MINI SIDE SI SC

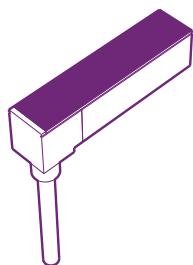
Side Light, Silicone, Single color

Printed

Lead Orientation

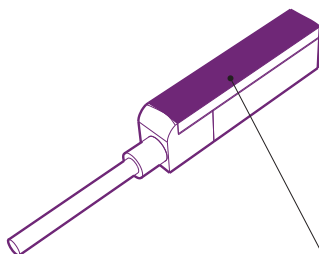
Back Lead

Part# NVSTK68SMBC



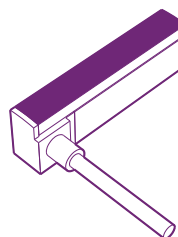
End Lead

Part# NVSTK68SMEC



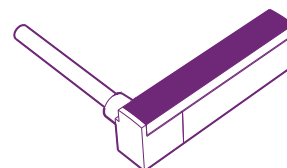
Right Side Lead

Part# NVSTK68SMRSC



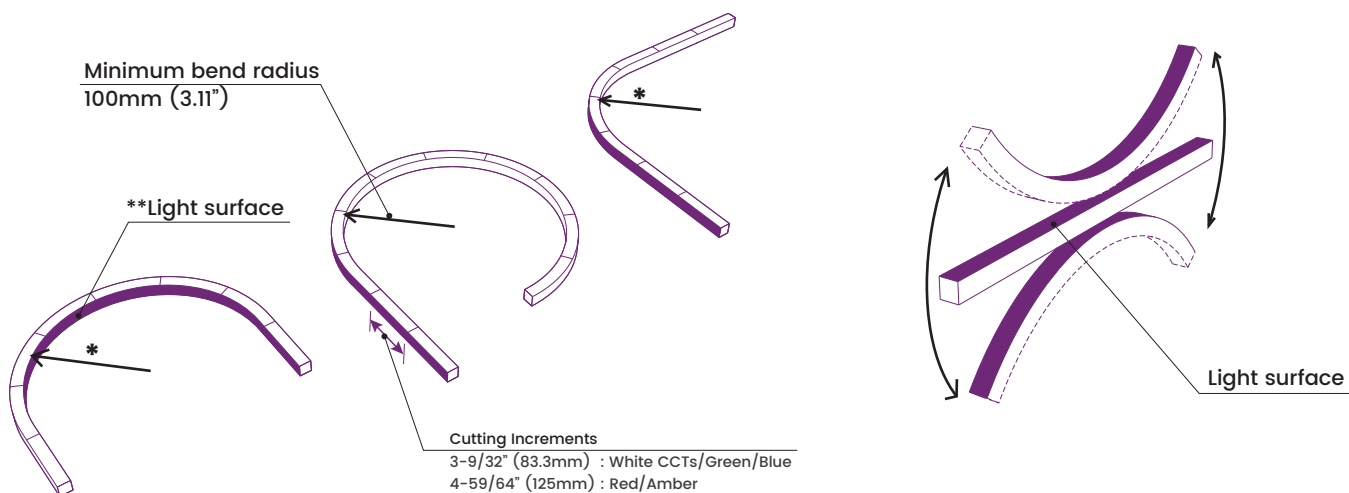
Left Side Lead

Part# NVSTK68SMLSC



Light surface

Minimum Bend Radius and Bend Orientations



**Light surface could be inside or outside.

BL neonVIEW SIDE Series bends vertically

*Horizontally bend option available on
BL neonVIEW DOME and FLAT Series

PROJECT

CLIENT

TYPE

Solid State Lighting is sensitive to power fluctuations
Surge protection is highly recommended for all LED lighting products and should be on a designated circuit to protect against premature failure
Lack of surge protection may void your warranty

For more information, please download the
BL LIGHTING catalogue

BL LIGHTING. ILLUMINATE EVERYTHING

111 - 8838 Heather St. Vancouver, BC, Canada. V6P 3S8
P: 1-604-874-4405 E: info@blighting.com
Copyright © BL INNOVATIVE LIGHTING. All Rights Reserved.

blighting.com



BL neonVIEW

Diffused, Flexible, Linear LED Lighting,
Side Emitting, 24VDC, Constant Voltage

MINI SIDE SI SC

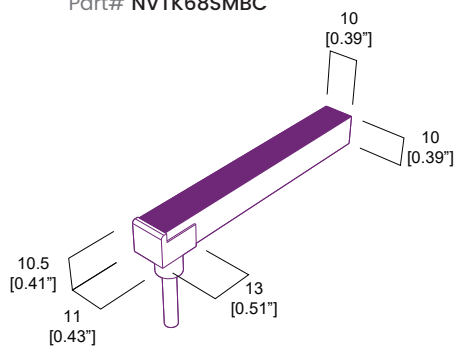
Side Light, Silicone, Single color

Printed

Dimensions (IP68 Seamless Injection Molded)

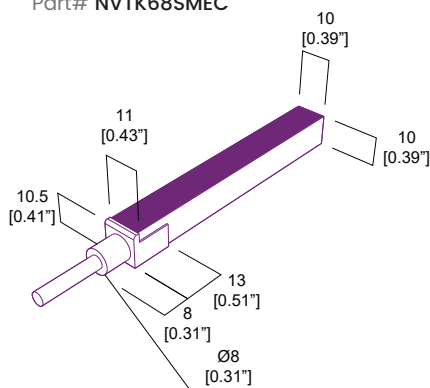
Back Lead

Part# NVTK68SMBC

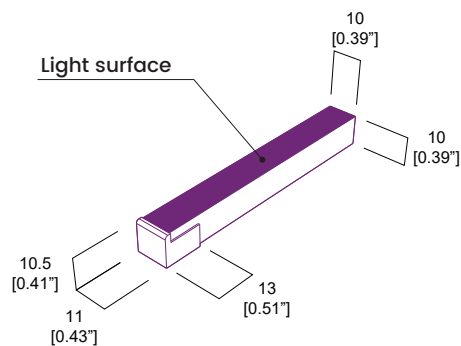


End Lead

Part# NVTK68SMEC

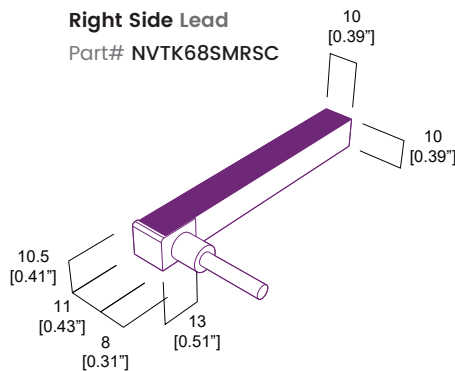


End Cap



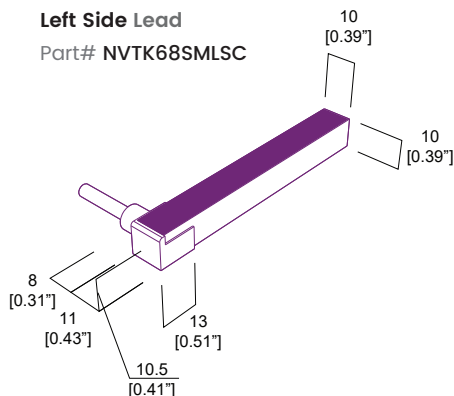
Right Side Lead

Part# NVTK68SMRSC



Left Side Lead

Part# NVTK68SMLSC



The tolerance of the Lead is $\pm 0.5\text{mm}$
For more detail, please download the CAD Drawing

PROJECT

CLIENT

TYPE

Solid State Lighting is sensitive to power fluctuations
Surge protection is highly recommended for all LED lighting products and should be on a designated circuit to protect against premature failure
Lack of surge protection may void your warranty

For more information, please download the
BL LIGHTING catalogue

BL LIGHTING. ILLUMINATE EVERYTHING

111 - 8838 Heather St. Vancouver, BC, Canada. V6P 3S8
P: 1-604-874-4405 E: info@blighting.com
Copyright © BL INNOVATIVE LIGHTING. All Rights Reserved.

blighting.com



BL neonVIEW

Diffused, Flexible, Linear LED Lighting,
Side Emitting, 24VDC, Constant Voltage

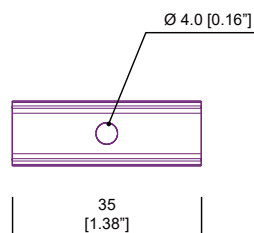
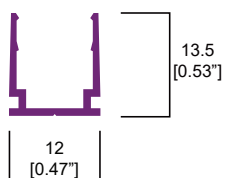
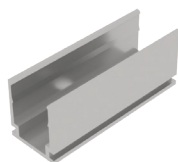
MINI SIDE SI SC

Side Light, Silicone, Single color

Printed

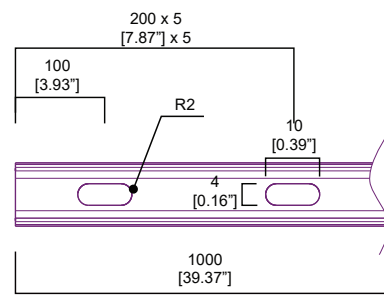
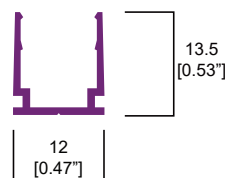
Surface Mounting Clip

Part# NVCP



Surface Mounting Channel

Part# NVMCH



The tolerance of the Lead is $\pm 0.5\text{mm}$
For more detail, please download the CAD Drawing

PROJECT

CLIENT

TYPE

Solid State Lighting is sensitive to power fluctuations
Surge protection is highly recommended for all LED lighting products and should be on a designated circuit to protect against premature failure
Lack of surge protection may void your warranty

For more information, please download the
BL LIGHTING catalogue

BL LIGHTING. ILLUMINATE EVERYTHING

111 - 8838 Heather St. Vancouver, BC, Canada. V6P 3S8
P: 1-604-874-4405 E: info@blighting.com
Copyright © BL INNOVATIVE LIGHTING. All Rights Reserved.

blighting.com



BL neonVIEW

Diffused, Flexible, Linear LED Lighting,
Side Emitting, 24VDC, Constant Voltage

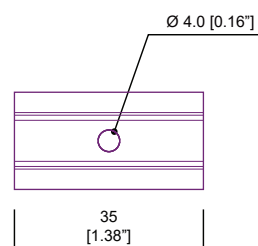
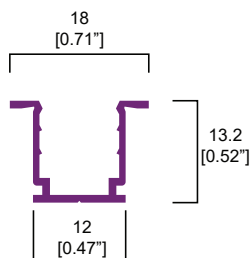
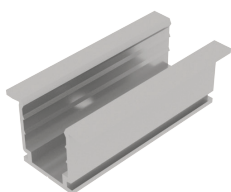
MINI SIDE SI SC

Side Light, Silicone, Single color

Printed

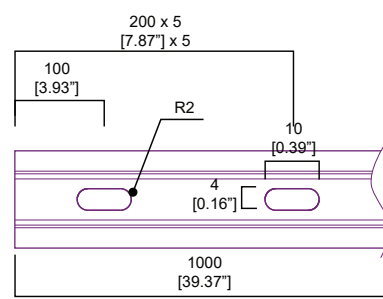
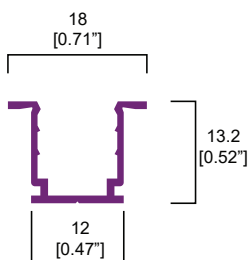
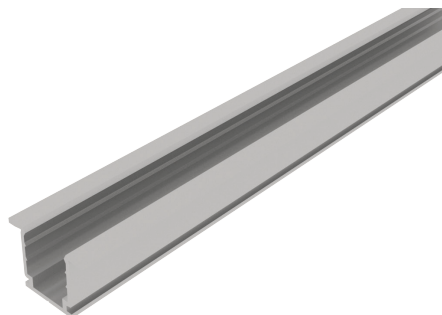
Recessed Mounting Clip

Part# NVRMC



Recessed Mounting Channel

Part# NVRMCH



The tolerance of the Lead is $\pm 0.5\text{mm}$
For more detail, please download the CAD Drawing

PROJECT

CLIENT

TYPE

Solid State Lighting is sensitive to power fluctuations
Surge protection is highly recommended for all LED lighting products and should be on a designated circuit to protect against premature failure
Lack of surge protection may void your warranty

For more information, please download the
BL LIGHTING catalogue

BL LIGHTING. ILLUMINATE EVERYTHING

111 - 8838 Heather St. Vancouver, BC, Canada. V6P 3S8
P: 1-604-874-4405 E: info@blighting.com
Copyright © BL INNOVATIVE LIGHTING. All Rights Reserved.

blighting.com

