

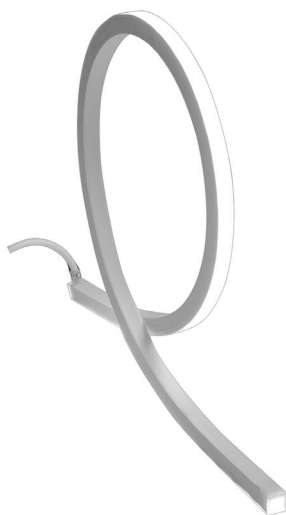
## BL neonVIEW

Diffused, Flexible, Linear LED Lighting,  
Side Emitting, 24VDC, Constant Voltage

## SIDE SI SC

Side Light, Silicone, Single color

Printed



### Certification



### Lighting



Lamp	LED, SMD 5050
LED's Per Foot	32 LEDs/ft (108 LEDs/m)
Power	* 2.44-3.66 W/FT
Beam Angle	120°
Average Life	50,000 Hours
Lumens	* 42-201 lm/FT
Efficacy	* 12-55 lm/W

### Electrical

Control	0-10V, MLV, DMX, Bluetooth
Input Voltage	24VDC
Max Input Current	4.12A (White)
Connections	18AWG, Copper Conductors
Operating Temperature	-40°F to 131°F (-40°C to 55°C)
Circuit	Class 2

### Mechanical

Housing Construction	Injection Moulded White Silicone
Cutting Increments	2-3/16" (55.6mm) : White CCTs/Green/Blue 3-9/32" (83.3mm) : Red/Amber
Maximum Run Length	* 25FT (7.9m) to 39FT (12m)
Medial Bend Radius	150mm (5-7/8")
Environmental	IP68 (Seamless Injection Molded)
Mounting	Clip, Track

### Accessories

NVSTK	** Factory installed termination kit
NVSJC	Factory installed jumper cable
NVSCP	Surface Mounting Clip
NVSMCH	Surface Mounting Channel
NVSRMC	Recessed Mounting Clip
NVSRMCH	Recessed Mounting Channel

\* Please refer to the performance table on the following page

\*\*Multiple Lead Orientation options available

PROJECT

CLIENT

TYPE

Solid State Lighting is sensitive to power fluctuations  
Surge protection is highly recommended for all LED lighting products and should be on a designated circuit to protect against premature failure  
Lack of surge protection may void your warranty

For more information, please download the  
BL LIGHTING catalogue

BL LIGHTING. ILLUMINATE EVERYTHING

111 - 8838 Heather St. Vancouver, BC, Canada. V6P 3S8  
P: 1-604-874-4405 E: info@blighting.com  
Copyright © BL INNOVATIVE LIGHTING. All Rights Reserved.

blighting.com



## BL neonVIEW

Diffused, Flexible, Linear LED Lighting,  
Side Emitting, 24VDC, Constant Voltage

## SIDE SI SC

Side Light, Silicone, Single color

Printed

## Performance

CCT/Color	Load	Lumens	Efficacy	Max. Length	Cutting Increments
2200K	3.66 W/FT	156 lm/FT	43 lm/W	25 ft 11 in	2-3/16 in (55.6mm)
2700K	3.66 W/FT	185 lm/FT	50 lm/W	25 ft 11 in	2-3/16 in (55.6mm)
3000K	3.66 W/FT	191 lm/FT	52 lm/W	25 ft 11 in	2-3/16 in (55.6mm)
3500K	3.66 W/FT	199 lm/FT	54 lm/W	25 ft 11 in	2-3/16 in (55.6mm)
4000K	3.66 W/FT	201 lm/FT	55 lm/W	25 ft 11 in	2-3/16 in (55.6mm)
5700K	3.66 W/FT	192 lm/FT	52 lm/W	25 ft 11 in	2-3/16 in (55.6mm)
Red	2.44 W/FT	66 lm/FT	27 lm/W	38 ft 12 in	3-9/32 in (83.3mm)
Green	3.66 W/FT	185 lm/FT	51 lm/W	25 ft 11 in	2-3/16 in (55.6mm)
Blue	3.66 W/FT	42 lm/FT	12 lm/W	25 ft 11 in	2-3/16 in (55.6mm)
Amber	2.44 W/FT	67 lm/FT	27 lm/W	38 ft 12 in	3-9/32 in (83.3mm)

## Ordering

Product Name

BL neonVIEW SIDE SI SC 24V

CCT/Color

2200K  
2700K  
3000K  
3500K  
4000K  
5700K  
Red  
Green  
Blue  
Amber

Lead Orientation

NVSTKBC = Back Lead  
NVSTKEC = End Lead  
NVSTKRSC = Right Side Lead  
NVSTKLSC = Left Side Lead

Mounting Accessories

NVSCP = Mounting Clip  
NVSMCH = Mounting Channel  
NVSRMC = Recessed Mounting Clip  
NVSRMCH = Recessed Mounting Channel

PROJECT

CLIENT

TYPE

Solid State Lighting is sensitive to power fluctuations  
Surge protection is highly recommended for all LED lighting products and should be on a designated circuit to protect against premature failure  
Lack of surge protection may void your warranty

For more information, please download the  
BL LIGHTING catalogue

BL LIGHTING. ILLUMINATE EVERYTHING

111 - 8838 Heather St. Vancouver, BC, Canada. V6P 3S8  
P: 1-604-874-4405 E: info@blighting.com  
Copyright © BL INNOVATIVE LIGHTING. All Rights Reserved.

blighting.com



## BL neonVIEW

Diffused, Flexible, Linear LED Lighting,  
Side Emitting, 24VDC, Constant Voltage

## SIDE SI SC

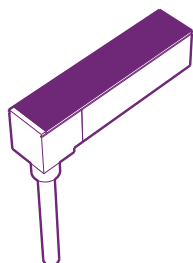
Side Light, Silicone, Single color

Printed

## Lead Orientation

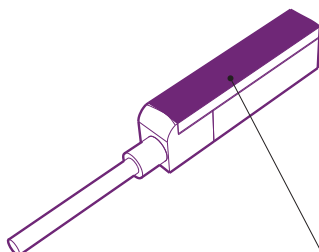
### Back Lead

Part# NVSTK68SMBC



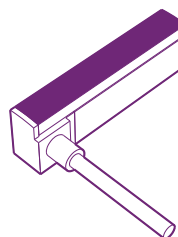
### End Lead

Part# NVSTK68SMEC



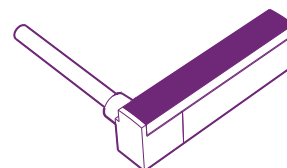
### Right Side Lead

Part# NVSTK68SMRSC

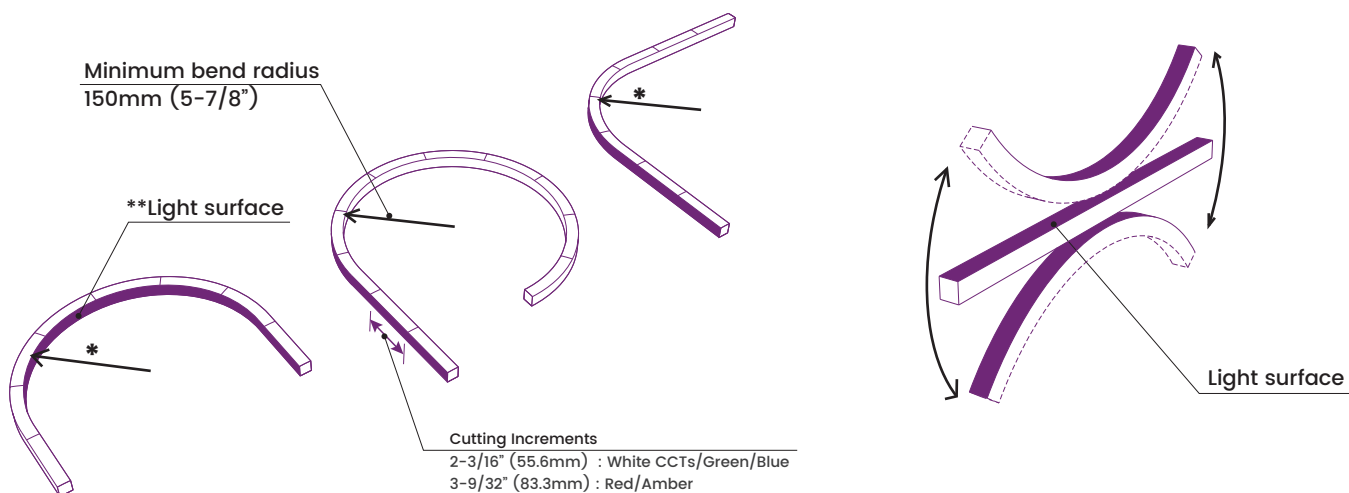


### Left Side Lead

Part# NVSTK68SMLSC



## Minimum Bend Radius and Bend Orientations



\*\*Light surface could be inside or outside.

BL neonVIEW SIDE Series bends vertically

\*Horizontally bend option available on  
BL neonVIEW DOME and FLAT Series

PROJECT

CLIENT

TYPE

Solid State Lighting is sensitive to power fluctuations  
Surge protection is highly recommended for all LED lighting products and should be on a designated circuit to protect against premature failure  
Lack of surge protection may void your warranty

For more information, please download the  
BL LIGHTING catalogue

BL LIGHTING. ILLUMINATE EVERYTHING

111 - 8838 Heather St. Vancouver, BC, Canada. V6P 3S8  
P: 1-604-874-4405 E: info@blighting.com  
Copyright © BL INNOVATIVE LIGHTING. All Rights Reserved.

blighting.com



## BL neonVIEW

Diffused, Flexible, Linear LED Lighting,  
Side Emitting, 24VDC, Constant Voltage

## SIDE SI SC

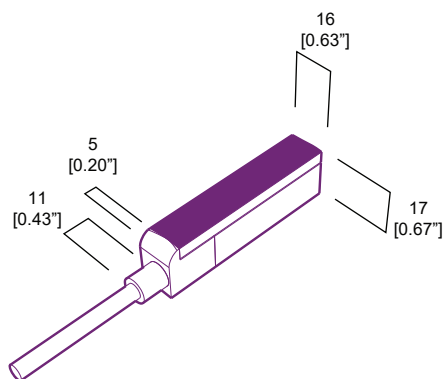
Side Light, Silicone, Single color

Printed

## Dimensions

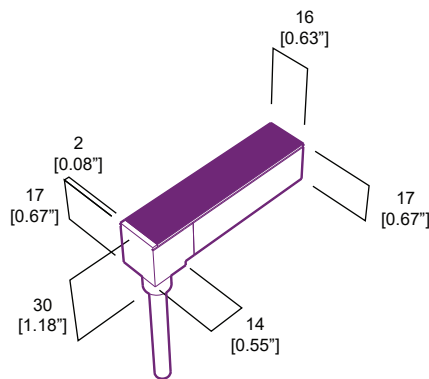
### End Lead

Part# NVSTK68SMEC

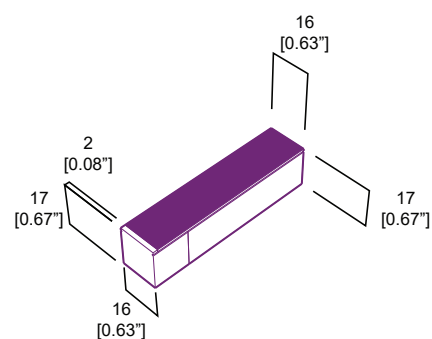


### Back Lead

Part# NVSTK68SMBC

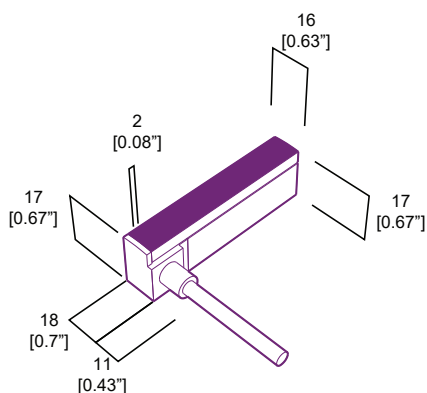


### End Cap



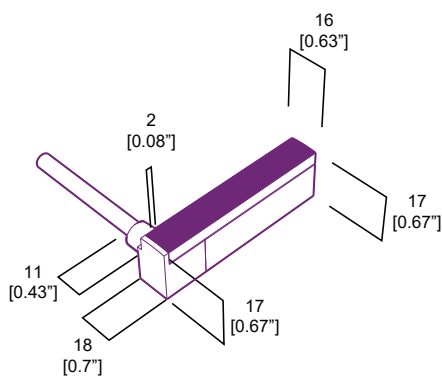
### Right Side Lead

Part# NVSTK68SMRSC



### Left Side Lead

Part# NVSTK68SMLSC



The tolerance of the Lead is  $\pm 0.5\text{mm}$   
For more detail, please download the CAD Drawing

PROJECT

CLIENT

TYPE

Solid State Lighting is sensitive to power fluctuations  
Surge protection is highly recommended for all LED lighting products and should be on a designated circuit to protect against premature failure  
Lack of surge protection may void your warranty

For more information, please download the  
BL LIGHTING catalogue

**BL LIGHTING.** ILLUMINATE EVERYTHING

111 - 8838 Heather St. Vancouver, BC, Canada. V6P 3S8  
P: 1-604-874-4405 E: info@blighting.com  
Copyright © BL INNOVATIVE LIGHTING. All Rights Reserved.

blighting.com



## BL neonVIEW

Diffused, Flexible, Linear LED Lighting,  
Side Emitting, 24VDC, Constant Voltage

## SIDE SI SC

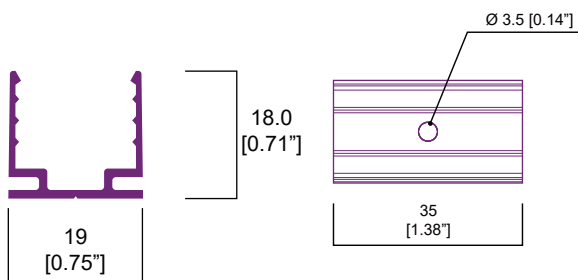
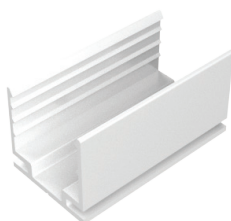
Side Light, Silicone, Single color

Printed

## Accessories (Surface Mounting Clip and Channel)

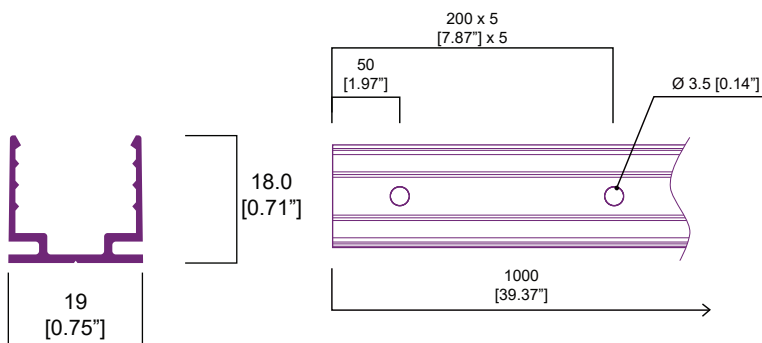
### Surface Mounting Clip

Part# NVSCP



### Surface Mounting Channel

Part# NVSMCH



For more detail, please download the CAD Drawing

PROJECT

CLIENT

TYPE

Solid State Lighting is sensitive to power fluctuations  
Surge protection is highly recommended for all LED lighting products and should be on a designated circuit to protect against premature failure  
Lack of surge protection may void your warranty

For more information, please download the  
**BL LIGHTING** catalogue

**BL LIGHTING. ILLUMINATE EVERYTHING**

111 - 8838 Heather St. Vancouver, BC, Canada. V6P 3S8  
P: 1-604-874-4405 E: info@blighting.com  
Copyright © BL INNOVATIVE LIGHTING. All Rights Reserved.

**blighting.com**



## BL neonVIEW

Diffused, Flexible, Linear LED Lighting,  
Side Emitting, 24VDC, Constant Voltage

## SIDE SI SC

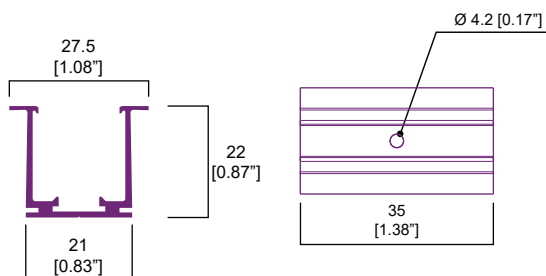
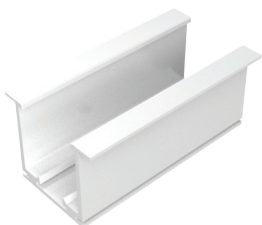
Side Light, Silicone, Single color

Printed

## Accessories (Recessed Mounting Clip and Channel)

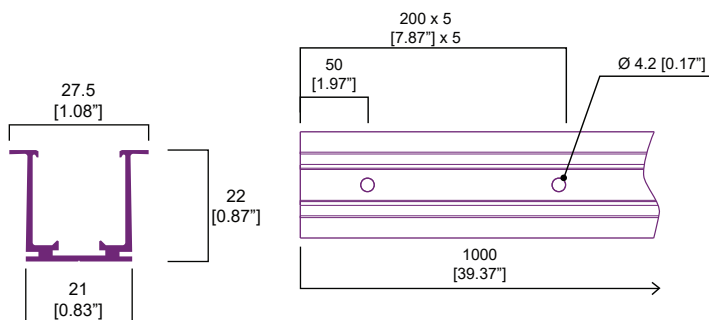
### Recessed Mounting Clip

Part# NVSRMC



### Recessed Mounting Channel

Part# NVSRMCH



For more detail, please download the CAD Drawing

PROJECT

CLIENT

TYPE

Solid State Lighting is sensitive to power fluctuations  
Surge protection is highly recommended for all LED lighting products and should be on a designated circuit to protect against premature failure  
Lack of surge protection may void your warranty

For more information, please download the  
**BL LIGHTING** catalogue

**BL LIGHTING. ILLUMINATE EVERYTHING**

111 - 8838 Heather St. Vancouver, BC, Canada. V6P 3S8  
P: 1-604-874-4405 E: info@blighting.com  
Copyright © BL INNOVATIVE LIGHTING. All Rights Reserved.

**blighting.com**

