

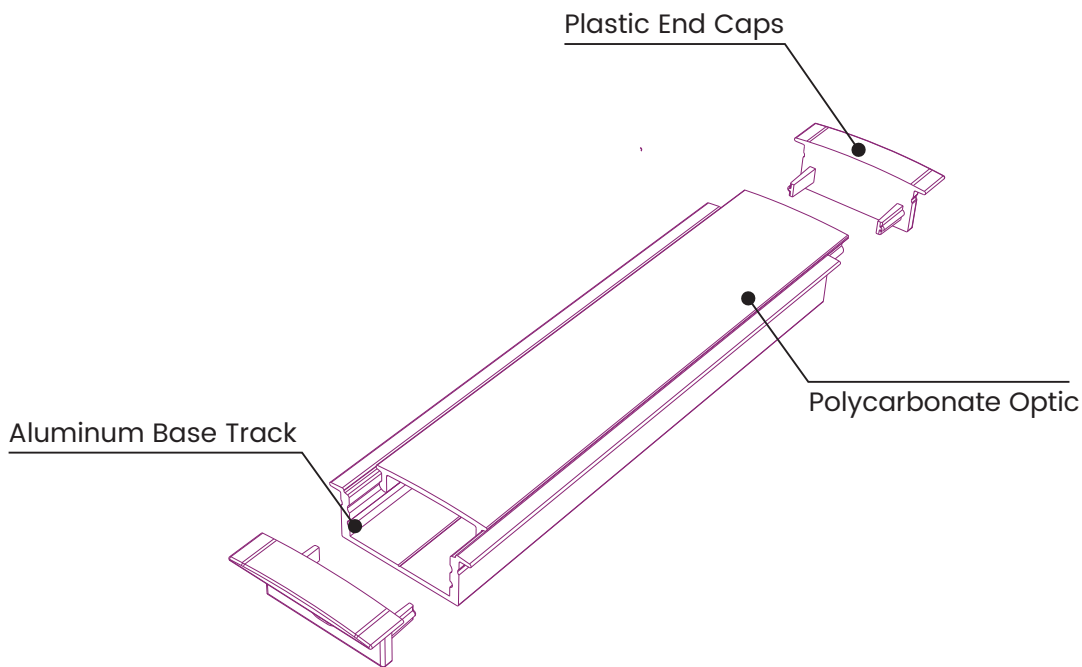
BL fixFORM

Indoor Recessed Aluminum Profile
Designed for use with **BL flexFORM** Series

RC Shallow 2811

Printed

Components:



Each 6ft length of LED Profile is shipped complete with End Caps.

PROJECT

CLIENT

TYPE

Solid State Lighting is sensitive to power fluctuations
Surge protection is highly recommended for all LED lighting products and should be on a designated circuit to protect against premature failure
Lack of surge protection may void your warranty

For more information, please download the
BL LIGHTING catalogue

BL LIGHTING. ILLUMINATE EVERYTHING

111 - 8838 Heather St. Vancouver, BC, Canada. V6P 3S8
P: 1-604-874-4405 E: info@bllighting.com
BL INNOVATIVE LIGHTING. All Rights Reserved.

bllighting.com

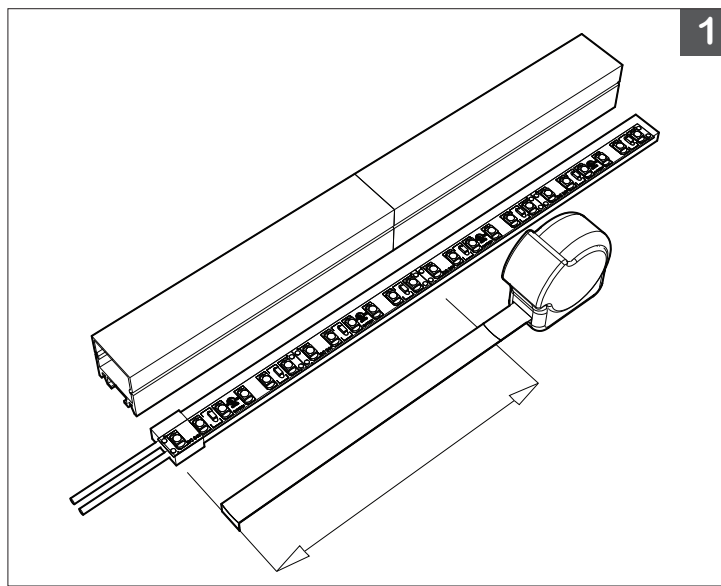


BL fixFORM

Indoor Recessed Aluminum Profile
Designed for use with **BL flexFORM** Series

RC Shallow 2811

Printed



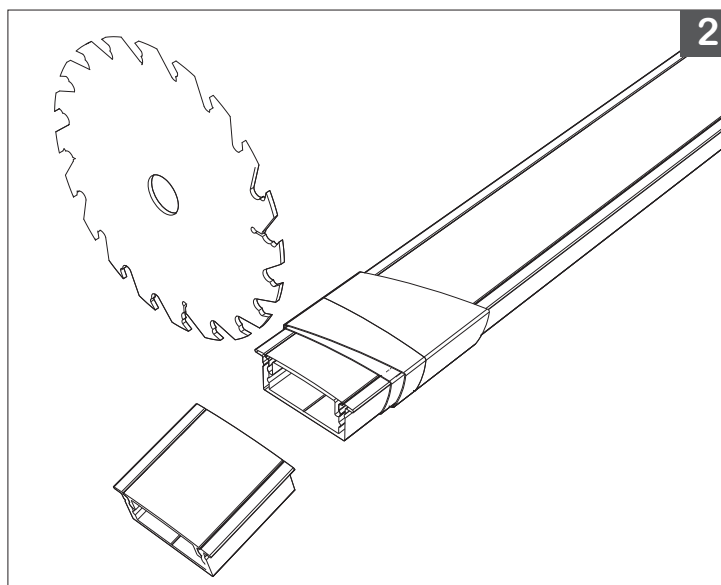
1

1, 2

Measure BL fixFORM in parallel with BL flexFORM for accurate coupling of components prior to cutting.

Use of a mechanical saw is recommended.

Tip: Secure BL fixFORM LED Aluminum Profile base track and lens together with tape, and cut with lens facing down.



2

PROJECT

CLIENT

TYPE

Solid State Lighting is sensitive to power fluctuations
Surge protection is highly recommended for all LED lighting products and should be on a designated circuit to protect against premature failure
Lack of surge protection may void your warranty

For more information, please download the
BL LIGHTING catalogue

BL LIGHTING. ILLUMINATE EVERYTHING

111 – 8838 Heather St. Vancouver, BC, Canada. V6P 3S8
P: 1-604-874-4405 E: info@blighting.com
BL INNOVATIVE LIGHTING. All Rights Reserved.

blighting.com

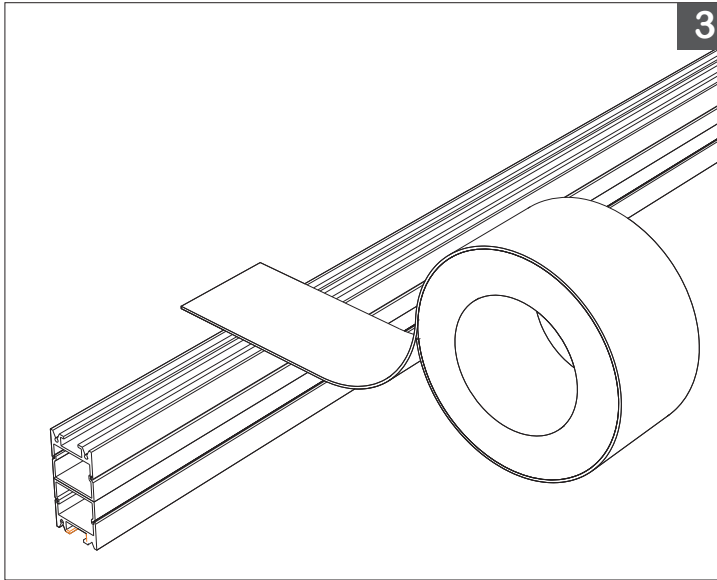


BL fixFORM

Indoor Recessed Aluminum Profile
Designed for use with **BL flexFORM** Series

RC Shallow 2811

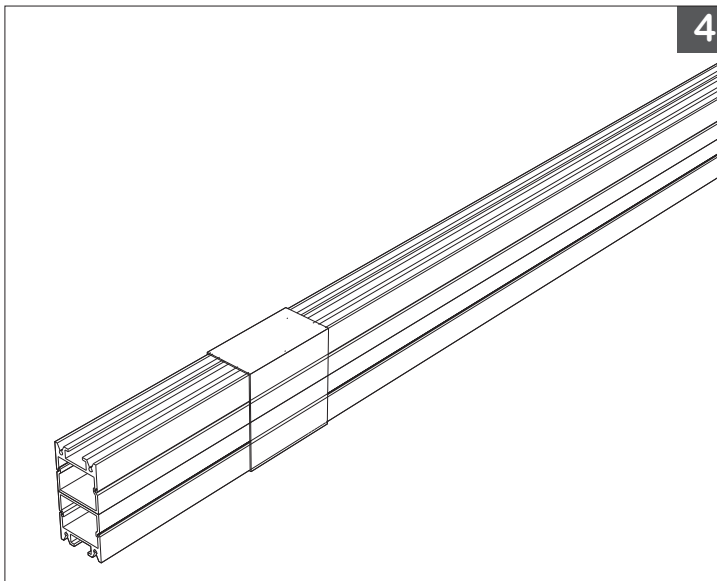
Printed



3, 4

For cutting multiple pieces to matching lengths, or to create 45° miter joints, prepare LED Profile by coupling Aluminum Profile base track with lens and place the lengths together, lens facing lens, and cut straight across or at the desired angle.

Tip: Securely wrap Lens and Aluminum Profile together with tape prior to cutting and initiate cut through backside of Aluminum Profile when cutting base track and lens simultaneously



PROJECT

CLIENT

TYPE

Solid State Lighting is sensitive to power fluctuations
Surge protection is highly recommended for all LED lighting products and should be on a designated circuit to protect against premature failure
Lack of surge protection may void your warranty

For more information, please download the
BL LIGHTING catalogue

BL LIGHTING. ILLUMINATE EVERYTHING

111 - 8838 Heather St. Vancouver, BC, Canada. V6P 3S8
P: 1-604-874-4405 E: info@bllighting.com
BL INNOVATIVE LIGHTING. All Rights Reserved.

bllighting.com

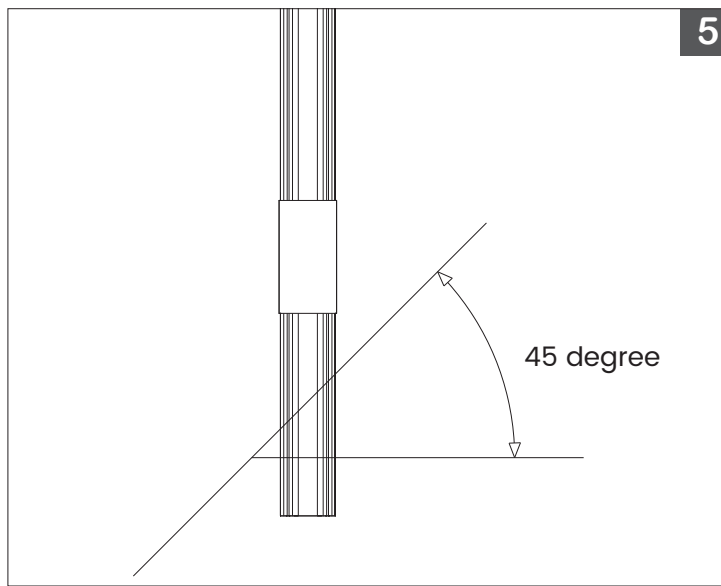


BL fixFORM

Indoor Recessed Aluminum Profile
Designed for use with **BL flexFORM** Series

RC Shallow 2811

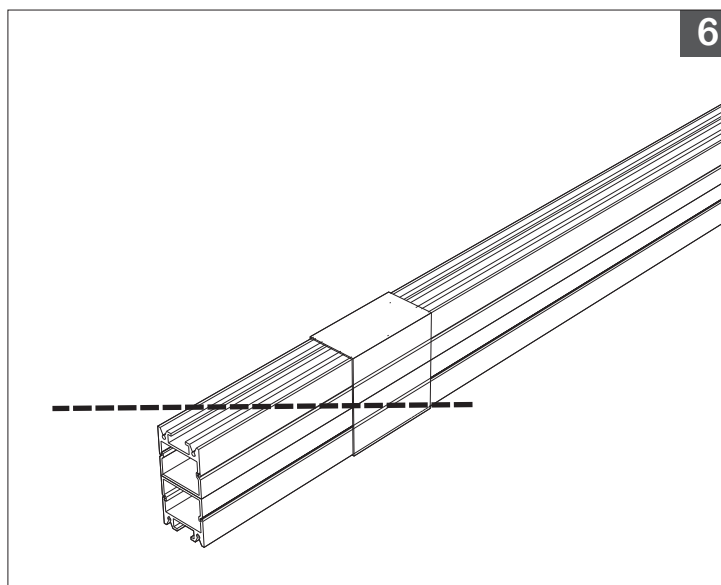
Printed



5

5,6

Measure desired length and start the cut from the top Base Track piece.



6

PROJECT

CLIENT

TYPE

Solid State Lighting is sensitive to power fluctuations
Surge protection is highly recommended for all LED lighting products and should be on a designated circuit to protect against premature failure
Lack of surge protection may void your warranty

For more information, please download the
BL LIGHTING catalogue

BL LIGHTING. ILLUMINATE EVERYTHING

111 - 8838 Heather St. Vancouver, BC, Canada. V6P 3S8
P: 1-604-874-4405 E: info@bllighting.com
BL INNOVATIVE LIGHTING. All Rights Reserved.

bllighting.com

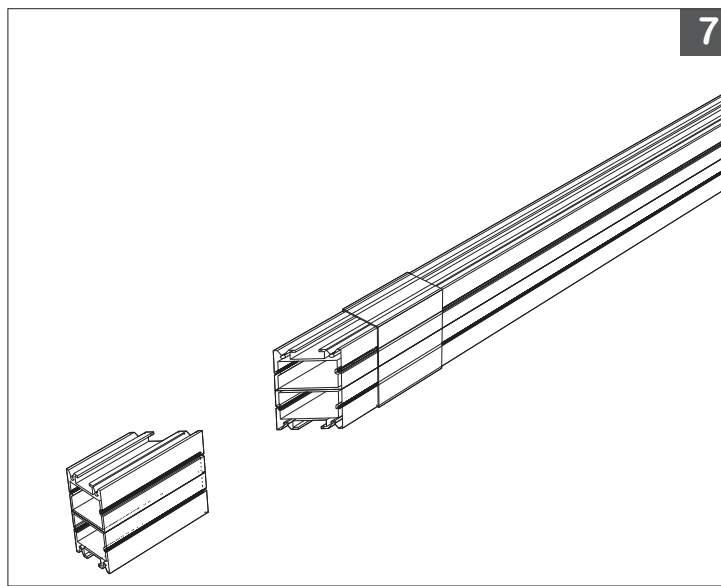


BL fixFORM

Indoor Recessed Aluminum Profile
Designed for use with **BL flexFORM** Series

RC Shallow 2811

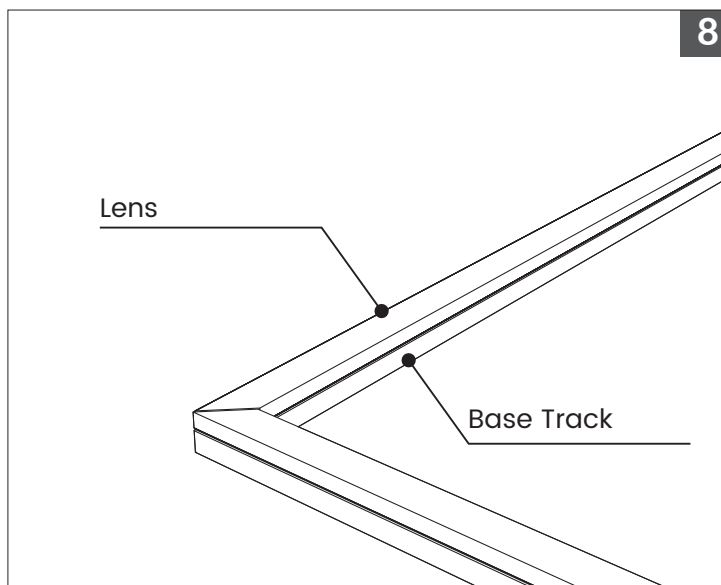
Printed



7

7,8

Join both pieces together with the Optical Lens facing up for a perfect 45° corner piece.



8

PROJECT

CLIENT

TYPE

Solid State Lighting is sensitive to power fluctuations
Surge protection is highly recommended for all LED lighting products and should be on a designated circuit to protect against premature failure
Lack of surge protection may void your warranty

For more information, please download the
BL LIGHTING catalogue

BL LIGHTING. ILLUMINATE EVERYTHING

111 - 8838 Heather St. Vancouver, BC, Canada. V6P 3S8
P: 1-604-874-4405 E: info@bllighting.com
BL INNOVATIVE LIGHTING. All Rights Reserved.

bllighting.com

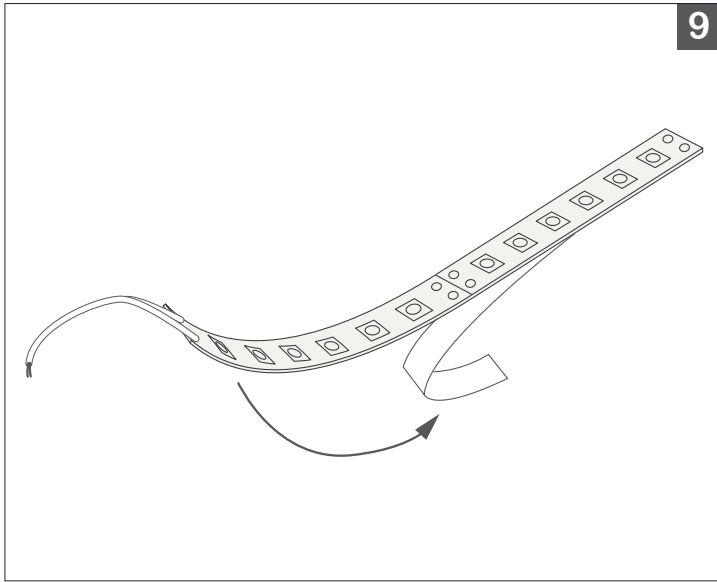


BL fixFORM

Indoor Recessed Aluminum Profile
Designed for use with **BL flexFORM** Series

RC Shallow 2811

Printed



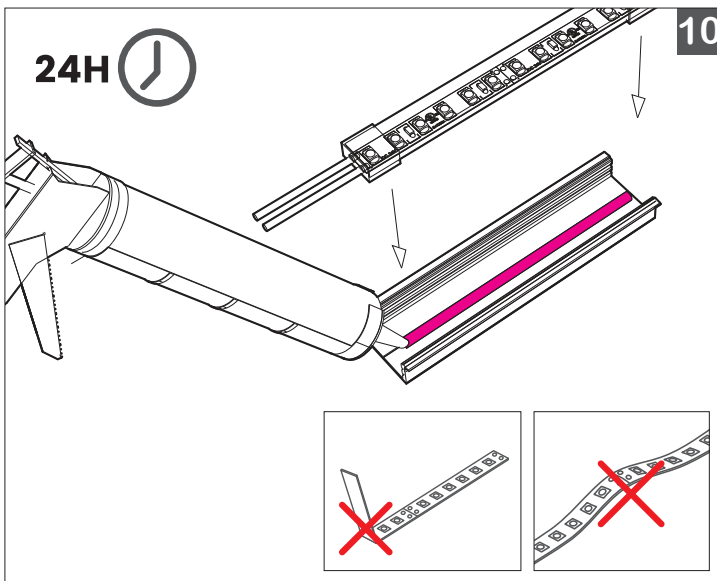
9

9,10

Remove the double-sided tape backing from the LED, if applicable, and secure the BL flexFORM LED strip into the Base Track using the adhesive provided on the LED, and/or adhesive tube.

Evenly bead adhesive along the inner surface of the BL fixFORM LED Profile base track.

IMPORTANT: Mounting surface must be clean and dry. To ensure a long lasting bond, it is recommended to run an alcohol wipe along the inside of the base track, and allow it to dry completely prior to securing BL flexFORM LED into place.



10

Secure BL flexFORM LED TAPE gently along the length, without bending or pulling up. Bonds should be held in place until adhesive has fixtured. Masking tape may be used along the length of the LED for this purpose.

Product should be allowed to develop full strength before subjecting to any service loads (typically 24-72 hours after assembly, depending on bond gap, materials and ambient conditions).

** For IP68 jacketed LED TAPE, BL flexFORM Dot-Free IP65, and down facing applications using IP65 or IP68 jacketed LED TAPE, please refer to installation guide for BL flexFORM ADH406*

PROJECT

CLIENT

TYPE

Solid State Lighting is sensitive to power fluctuations
Surge protection is highly recommended for all LED lighting products and should be on a designated circuit to protect against premature failure
Lack of surge protection may void your warranty

For more information, please download the
BL LIGHTING catalogue

BL LIGHTING. ILLUMINATE EVERYTHING

111 - 8838 Heather St. Vancouver, BC, Canada. V6P 3S8
P: 1-604-874-4405 E: info@blighting.com
BL INNOVATIVE LIGHTING. All Rights Reserved.

blighting.com

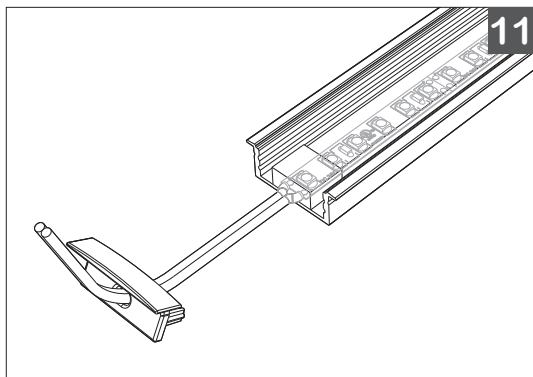


BL fixFORM

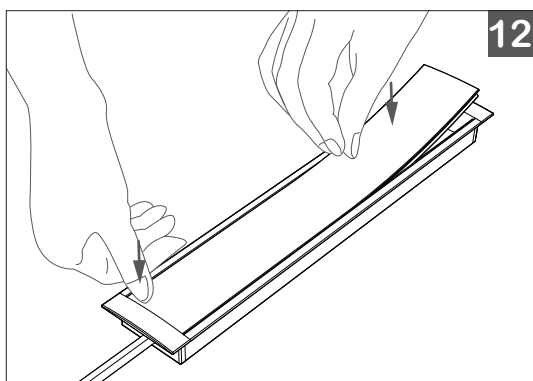
Indoor Recessed Aluminum Profile
Designed for use with **BL flexFORM** Series

RC Shallow 2811

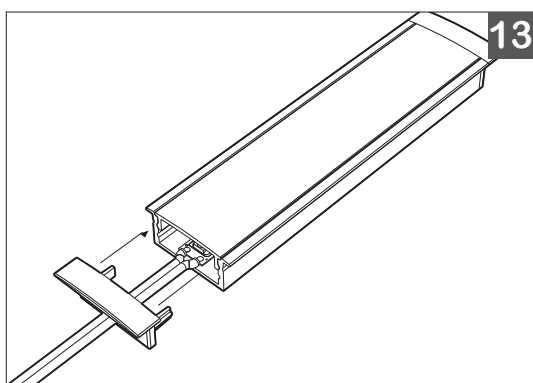
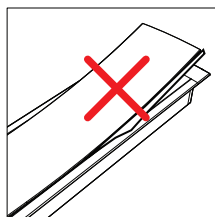
Printed



11.
Gently guide the lead wires through the end caps.



12.
Put one corner in first.
Press in the subsequent sections of the cover.
Be careful not to bend or break the wings of the cover.



13.
Push the endcaps onto the ends of profile.
Ensure a tight fit between the profile and endcaps.

PROJECT

CLIENT

TYPE

Solid State Lighting is sensitive to power fluctuations
Surge protection is highly recommended for all LED lighting products and should be on a designated circuit to protect against premature failure
Lack of surge protection may void your warranty

For more information, please download the
BL LIGHTING catalogue

BL LIGHTING. ILLUMINATE EVERYTHING

111 – 8838 Heather St. Vancouver, BC, Canada. V6P 3S8
P: 1-604-874-4405 E: info@bllighting.com
BL INNOVATIVE LIGHTING. All Rights Reserved.

bllighting.com



BL fixFORM

Indoor Recessed Aluminum Profile
Designed for use with **BL flexFORM** Series

RC Shallow 2811

Printed



Please note that these instructions are guidelines only and in no way supersede any construction or installation standards.

Local building and electrical codes should be consulted before installation.

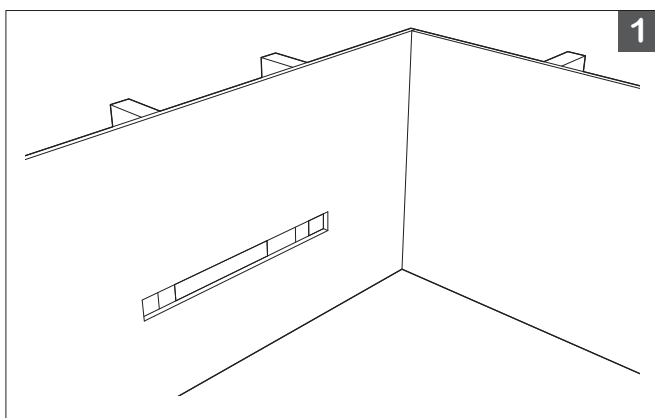
ATTENTION

- There is potential danger of electrical shock when operating electrical components.
- Make sure power is turned off before installation.
- Read all installation and assembly guidelines completely prior to installation and operation.

For recessed mounting, the housing may be attached directly into the framing / solid surface and secured either by counter-sinking screws, or push fit and secured with adhesive. Mounting clip fixing is not possible when installed in a recess.

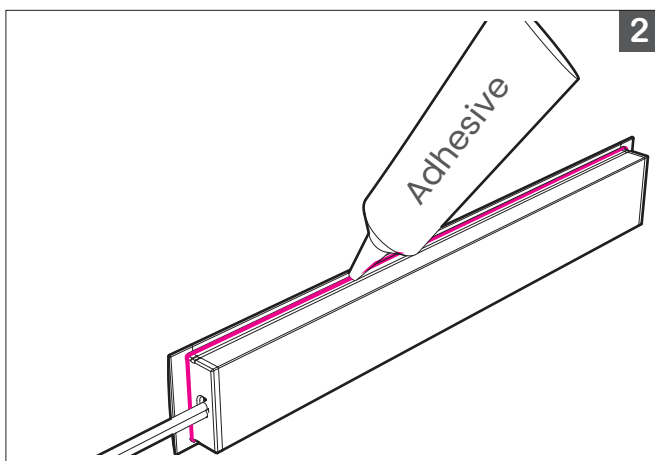
Layout and mark profile position to measured desired length of LED profile including the end caps. The depth of the required cutout into your mounting surface will vary depending on the fixing method, and type of profile used.

Mounting Method (Push Fit)

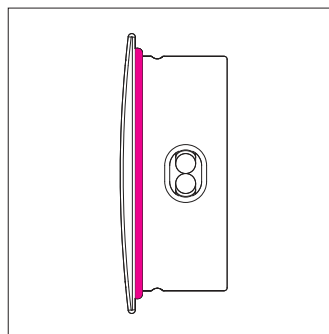


1. Cut opening into mounting surface using proper width key hole saw and depth setting conforming to your recessed channel type. NOTE: Be sure to cut opening smaller than the wings of the flanged channel to ensure the opening is completely covered. Drill hole into mounting surface for routing power wire as required. Select appropriate adhesive for securing fixture. Apply adhesive to channel assembly and insert into routed surface.

NOTE: Cut routed opening slightly deeper than depth of channel base to accommodate space for adhesive.



2. Apply a layer of adhesive to the back of the profile.

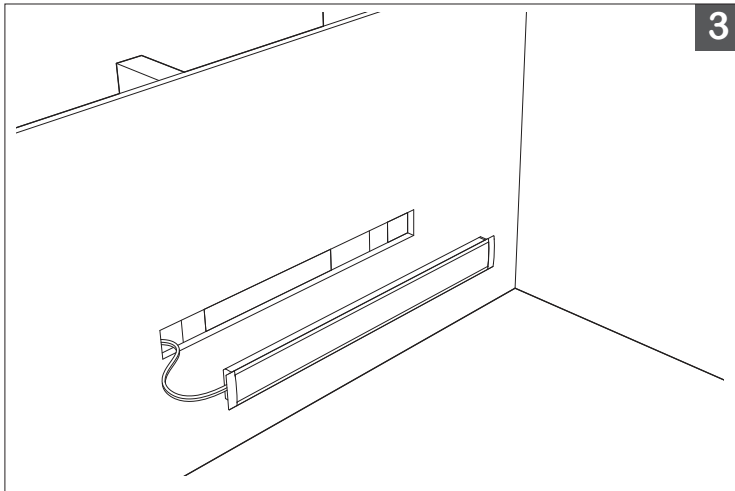


BL fixFORM

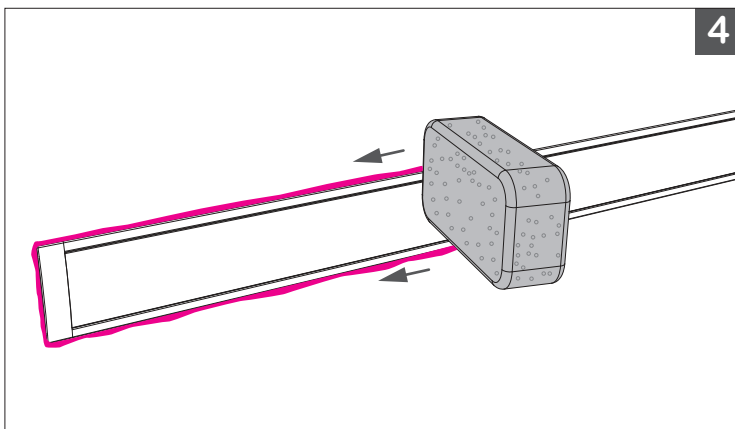
Indoor Recessed Aluminum Profile
Designed for use with **BL flexFORM** Series

RC Shallow 2811

Printed



3.
Route wires through opening, and push fit assembled profile into place



4.
Gently clean the excess adhesive from the profile.

Mounting Method (Direct Screw - Countersink)

Select the smallest available countersink screws that will retain the LED Profile.

Drill a hole specific to your mounting screw diameter in the center of the housing and counter-sink hole so screw will sit flush with housing; ensure there are no burrs around the hole as they can damage the LED.

Anchor housing to framing or solid surface using screws.

Install LED strip over mounting screw.

The LED strip must lie flat against the profile, to preserve the thermal pathway for the LED and provide even illumination.

