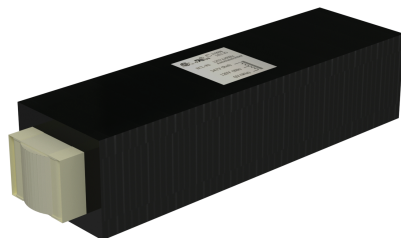


## BL driveLINE TRS

Step-Down Transformer  
125W, 347AC - 120VAC

**347**

Printed



### Certification



### Electrical

Input Voltage	347VAC
Output Voltage	120VAC
Input Frequency	60 Hz
Load	125W
Connections	18 AWG, Copper Conductors
Min Load	20% - 25%
Efficiency	88%
Max. Ambient Temp.	-40°C to 50°C
Rating	Class B, 130°C Insulation

### Mechanical

Housing Construction	Potted Epoxy
Weight	1.22kg (2.7lb)
Environmental	IP20

### Wiring

347VAC	Red
120VAC	Black
0V	White

PROJECT

CLIENT

TYPE

Solid State Lighting is sensitive to power fluctuations  
Surge protection is highly recommended for all LED lighting products and should be on a designated circuit to protect against premature failure  
Lack of surge protection may void your warranty

For more information, please download the  
**BL LIGHTING** catalogue

**BL LIGHTING. ILLUMINATE EVERYTHING**

111 - 8838 Heather St. Vancouver, BC, Canada. V6P 3S8  
P: 1-604-874-4405 F: 1-604-321-0445 E: info@bllighting.com  
Copyright © 2017 BL INNOVATIVE LIGHTING. All Rights Reserved.

**bllighting.com**



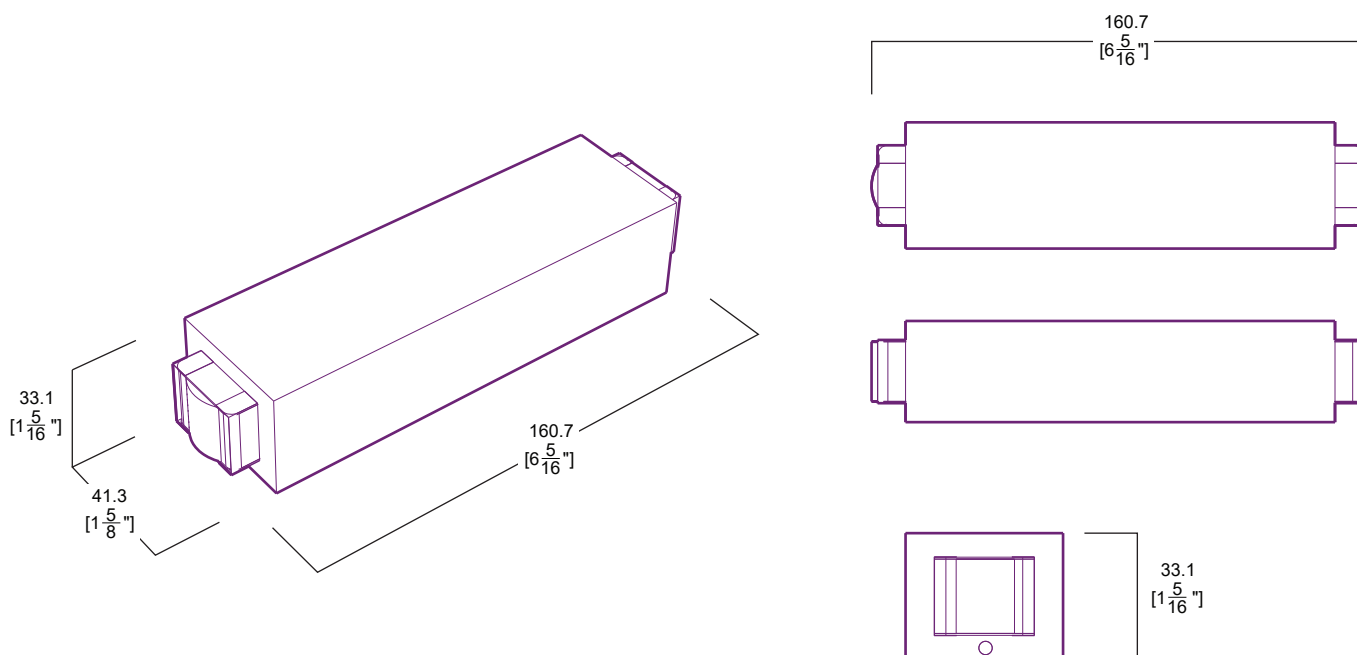
**BL driveLINE TRS**

Step-Down Transformer  
125W, 347AC - 120VAC

**347**

Printed

**Dimensions**



PROJECT

CLIENT

TYPE

Solid State Lighting is sensitive to power fluctuations  
Surge protection is highly recommended for all LED lighting products and should be on a designated circuit to protect against premature failure  
Lack of surge protection may void your warranty

For more information, please download the  
**BL LIGHTING** catalogue

**BL LIGHTING. ILLUMINATE EVERYTHING**

111 - 8838 Heather St. Vancouver, BC, Canada. V6P 3S8  
P: 1-604-874-4405 F: 1-604-321-0445 E: info@bllighting.com  
Copyright © 2017 BL INNOVATIVE LIGHTING. All Rights Reserved.

**bllighting.com**

