

## BL flexFORM

Flexible, Linear LED Strip Lighting  
Polychromatic, 24VDC, Constant Voltage

## RGBW Series

Printed



Please note that these instructions are guidelines only and in no way supersede any construction or installation standards.

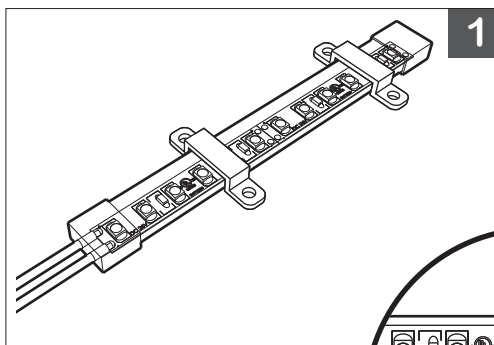
Local building and electrical codes should be consulted before installation.

### ATTENTION

- There is potential danger of electrical shock when operating electrical components.
- Make sure power is turned off before installation.
- Allow for heat dissipation and adequate ventilation.

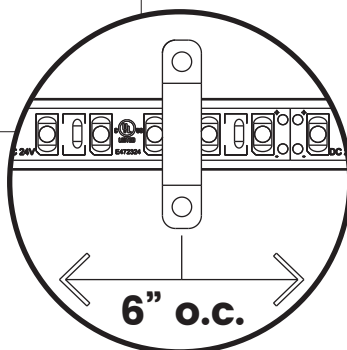
## CLIP

Ideal for wood and other porous surfaces

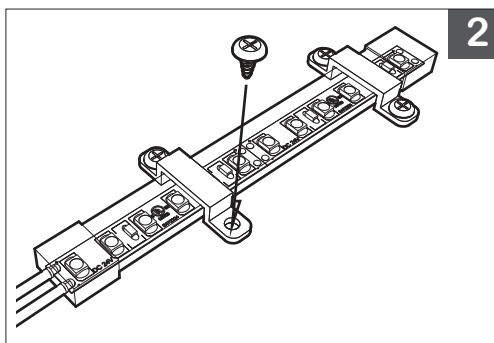


1.

- A. Hold **BL flexFORM RGBW** taught to mounting surface.
- B. Align clips in-between LED diodes (not directly over them).



**NOTE:** Two clips per linear foot is recommended for secure fastening.



2. Mount clips to surface with screws.

**IMPORTANT:** Be careful not to over-tighten screws when using power tools.

PROJECT

CLIENT

TYPE

Solid State Lighting is sensitive to power fluctuations  
Surge protection is highly recommended for all LED lighting products and should be on a designated circuit to protect against premature failure  
Lack of surge protection may void your warranty

For more information, please download the  
**BL LIGHTING** catalogue

**BL LIGHTING.** ILLUMINATE EVERYTHING

111 - 8838 Heather St. Vancouver, BC, Canada. V6P 3S8  
P: 1-604-874-4405 F: 1-604-321-0445 E: info@bllighting.com  
Copyright © 2017 BL INNOVATIVE LIGHTING. All Rights Reserved.

[bllighting.com](http://bllighting.com)



## BL flexFORM

Flexible, Linear LED Strip Lighting  
Polychromatic, 24VDC, Constant Voltage

## RGBW Series

Printed



Please note that these instructions are guidelines only and in no way supersede any construction or installation standards.

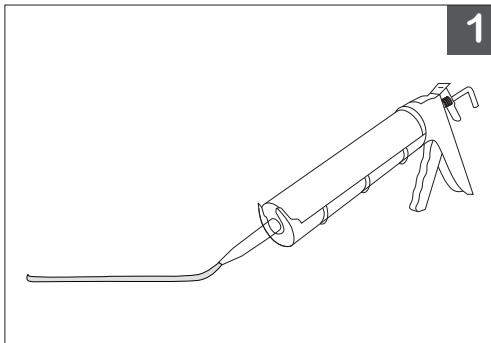
Local building and electrical codes should be consulted before installation.

### ATTENTION

- There is potential danger of electrical shock when operating electrical components.
- Make sure power is turned off before installation.
- Allow for heat dissipation and adequate ventilation.

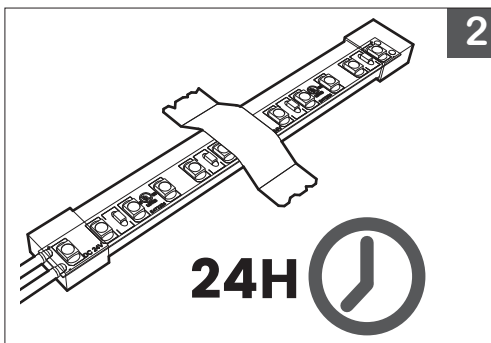
## ADHESIVE

Ideal for smooth and/or delicate surfaces



1. Evenly bead adhesive to surface at required length.

**IMPORTANT:** Ensure surface is clean and dry before applying adhesive.



2.

A. Firmly gel **BL flexFORM RGBW** into adhesive.  
B. Secure **BL flexFORM RGBW** into position with masking tape.  
Allow adhesive to cure (24 hours) before removing masking tape.

PROJECT

CLIENT

TYPE

Solid State Lighting is sensitive to power fluctuations  
Surge protection is highly recommended for all LED lighting products and should be on a designated circuit to protect against premature failure  
Lack of surge protection may void your warranty

For more information, please download the  
**BL LIGHTING** catalogue

**BL LIGHTING. ILLUMINATE EVERYTHING**

111 - 8838 Heather St. Vancouver, BC, Canada. V6P 3S8  
P: 1-604-874-4405 F: 1-604-321-0445 E: info@bllighting.com  
Copyright © 2017 BL INNOVATIVE LIGHTING. All Rights Reserved.

**bllighting.com**



## BL flexFORM

Flexible, Linear LED Strip Lighting  
Polychromatic, 24VDC, Constant Voltage

## RGBW Series

Printed



Please note that these instructions are guidelines only and in no way supersede any construction or installation standards.

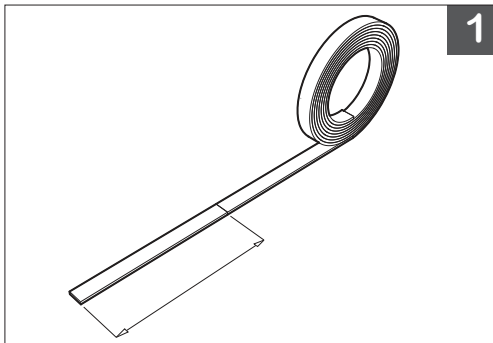
Local building and electrical codes should be consulted before installation.

### ATTENTION

- There is potential danger of electrical shock when operating electrical components.
- Make sure power is turned off before installation.
- Allow for heat dissipation and adequate ventilation.

## DOUBLE-SIDED TAPE

Ideal for temporary installations

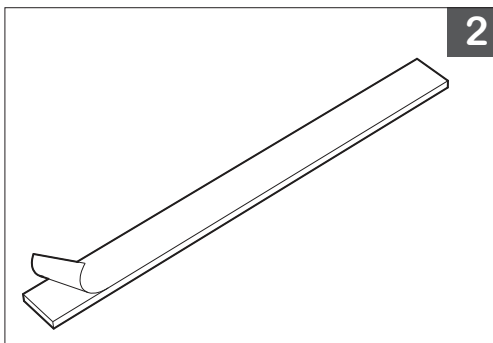


1

1.

- A. Measure and cut required length of tape.
- B. Stick tape to desired surface.

**IMPORTANT:** Ensure surface is clean and dry before applying tape.



2

2.

- A. Remove protective layer from tape exposing adhesive.
- B. Center and firmly compress **BL flexFORM RGBW** to tape.

**IMPORTANT:** Double-Sided Tape is not suitable for applications where **BL flexFORM RGBW** is to be installed in a vertical or down-facing position.

PROJECT

CLIENT

TYPE

Solid State Lighting is sensitive to power fluctuations  
Surge protection is highly recommended for all LED lighting products and should be on a designated circuit to protect against premature failure  
Lack of surge protection may void your warranty

For more information, please download the  
**BL LIGHTING** catalogue

**BL LIGHTING. ILLUMINATE EVERYTHING**

111 - 8838 Heather St. Vancouver, BC, Canada. V6P 3S8  
P: 1-604-874-4405 F: 1-604-321-0445 E: info@bllighting.com  
Copyright © 2017 BL INNOVATIVE LIGHTING. All Rights Reserved.

[bllighting.com](http://bllighting.com)

